

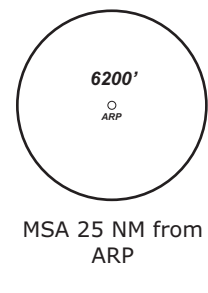
STRAUBING ATIS 135.52	STRAUBING Info 127.15	MÜNCHEN Radar 129.52	MÜNCHEN Radar 124.05
--------------------------	--------------------------	-------------------------	-------------------------

TRANS LEVEL: BY ATC

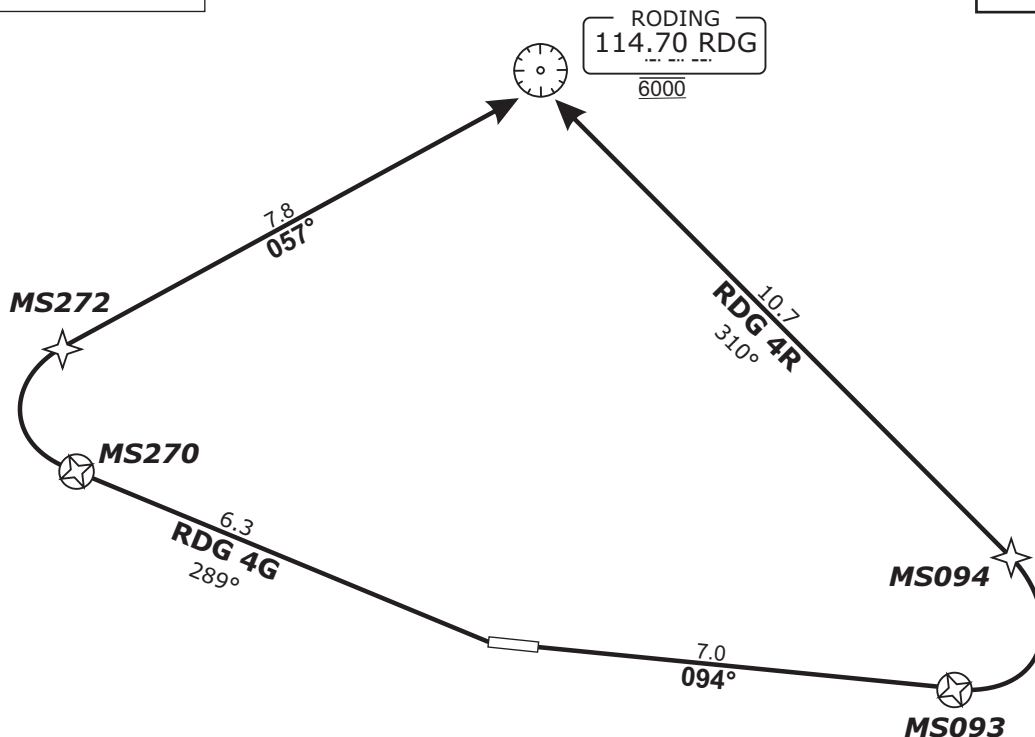
TRANS ALT: 5000'

APT Elevation: 1054'

RDG 4R - RODING FOUR ROMEO (17.7 NM)
RDG 4G - RODING FOUR GOLF (14.1 NM)



BEARINGS AND TRACKS ARE MAGNETIC.
ALTITUDES IN FEET MSL



DEPARTURES ENTERING
CONTROLLED AIRSPACE
WHEN PASSING 1000 AGL.

Caution!
MOUNTAINOUS TERRAIN
EAST OF FIELD:

Procedure not to be used
during activity of NLFS

Do not use for real life navigation!

Revision: 2014-12-11 - Change: note modified

Report passing 3600 to Straubing Info and contact München Radar **Initial climb 6000'**

SID	RWY	ROUTING	GPS/FMS RNAV	REMARKS
RDG 4R	09	Climb on track 095° to MS093; LT, via MS094 on track 311° to RDG. Cross RDG at 6000.	[A1500+] - <u>MS093[L]</u> - MS094 - RDG[A6000].	PDG 4.0% (240ft/NM) due to MEA
RDG 4G	27	Climb on track 289° to MS270; RT, via MS270 on track 057° to RDG, cross RDG at 6000.	[A1500+] - <u>MS270[R]</u> - MS272 - RDG[A6000].	PDG 5.0% (305ft/NM) due to MEA