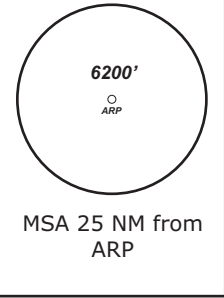


STRAUBING ATIS 135.52	STRAUBING Info 127.15	MÜNCHEN Radar 129.52	MÜNCHEN Radar 124.05
--------------------------	--------------------------	-------------------------	-------------------------

TRANS LEVEL: BY ATC TRANS ALT: 5000' APT Elevation: 1054'

MAMOR 3R - MAMOR THREE ROMEO (25.5 NM)
MAMOR 4G - MAMOR FOUR GOLF (12.2 NM)



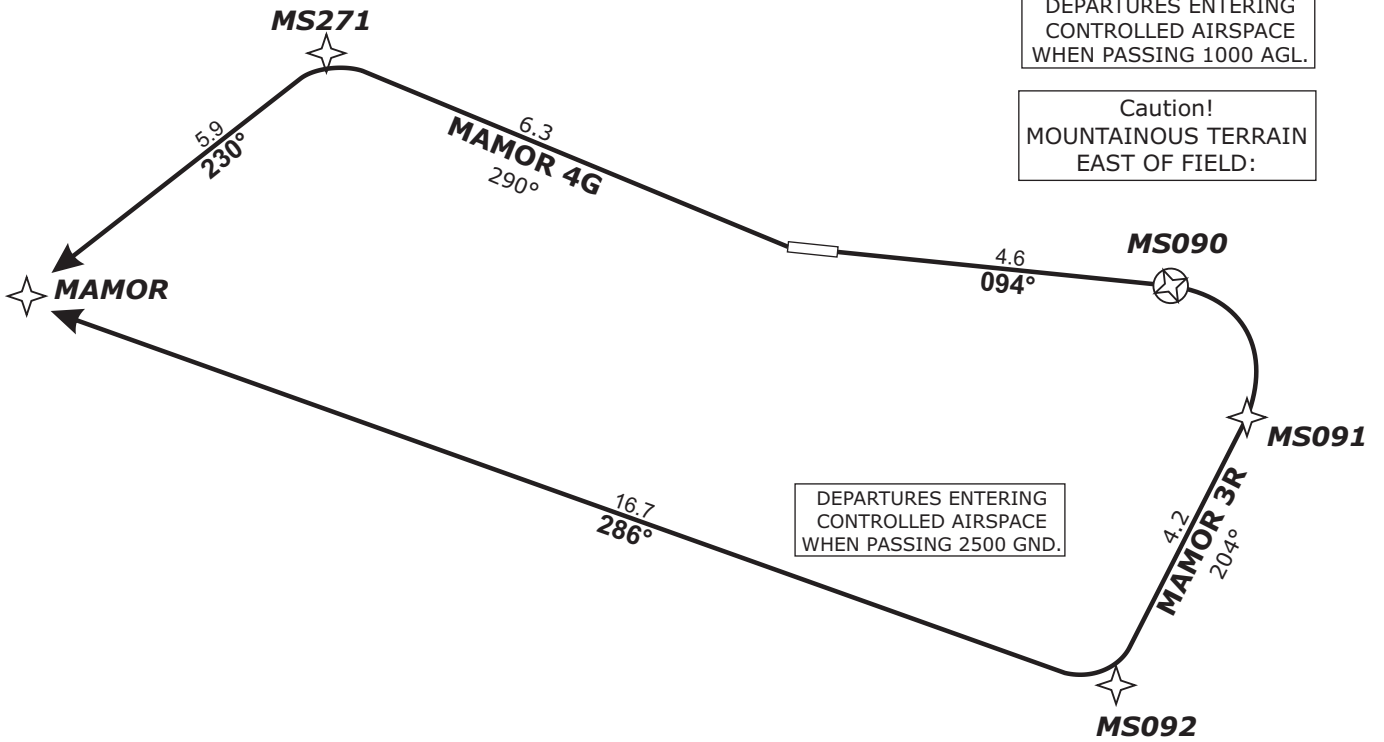
BEARINGS AND TRACKS ARE MAGNETIC.
 ALTITUDES IN FEET MSL

DEPARTURES ENTERING CONTROLLED AIRSPACE WHEN PASSING 1000 AGL.

Caution!
 MOUNTAINOUS TERRAIN EAST OF FIELD:

DEPARTURES ENTERING CONTROLLED AIRSPACE WHEN PASSING 2500 GND.

Procedure not to be used during activity of NLFS



Do not use for real life navigation!

Revision: 2014-12-11 - Change: note modified

Report passing 3600 to Straubing Info and contact München Radar Initial climb 5000'

SID	RWY	ROUTING	GPS/FMS RNAV	REMARKS
MAMOR 3R	09	Climb on track 094° to MS090; RT, via MS091 on track 204° to MS092, RT, on track 286° to MAMOR.	[A1500+] - MS090[R]- MS091 - MS092[R] - MAMOR.	
MAMOR 4G	27	Climb on track 290° to MS271; LT, on track 230° to MAMOR.	[A1500+] - MS271[L] - MAMOR.	PDG 5.0% (305ft/NM) due to MEA