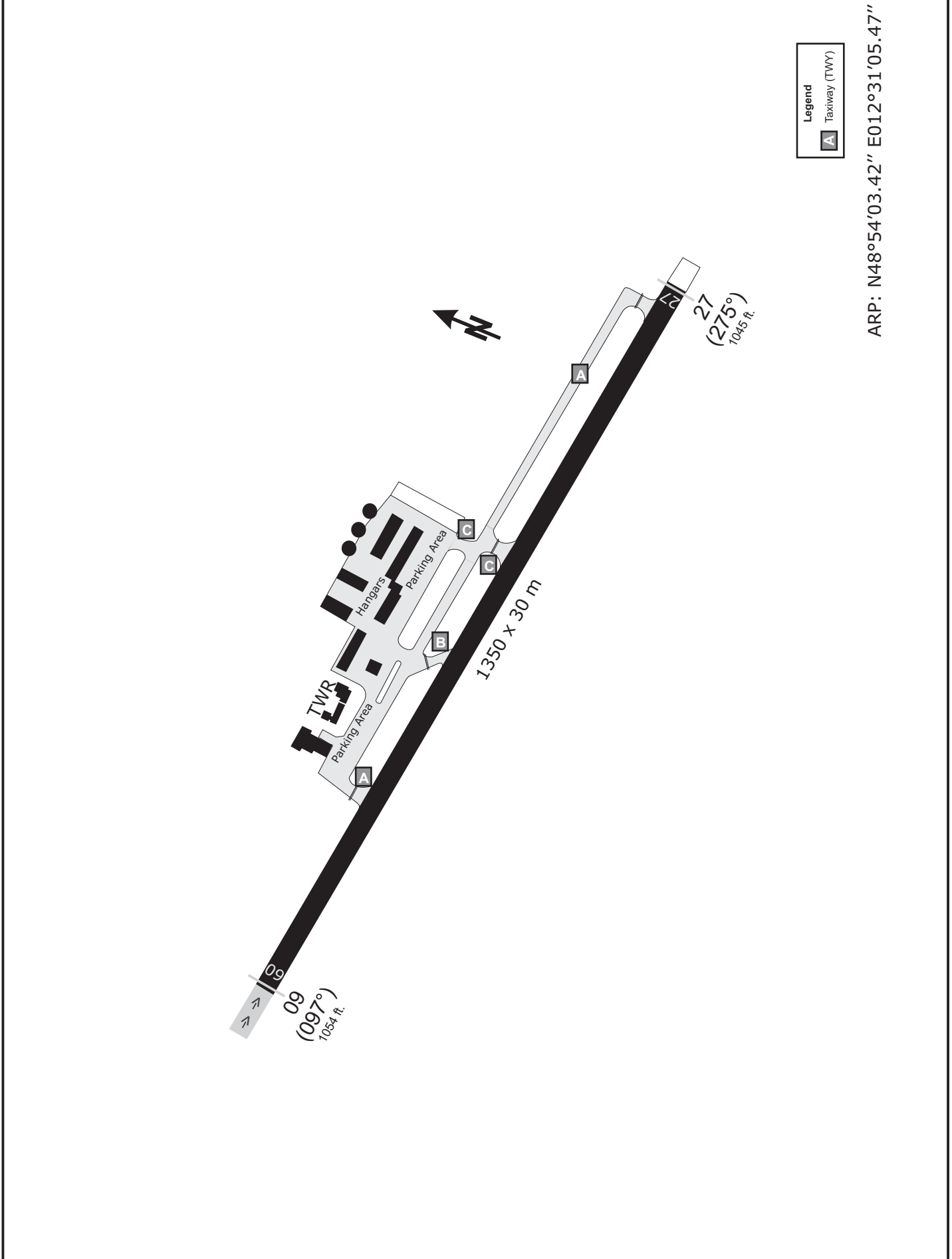


STRAUBING ATIS 135.52	STRAUBING Info 127.15	MÜNCHEN Radar 129.52	MÜNCHEN Radar 124.05
--------------------------	--------------------------	-------------------------	-------------------------

TRANS LEVEL: BY ATC TRANS ALT: 5000' APT Elevation: 1054'

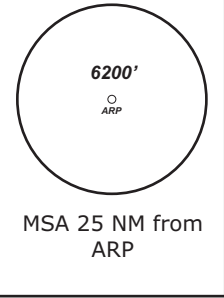


Do not use for real life navigation!

STRAUBING ATIS 135.52	STRAUBING Info 127.15	MÜNCHEN Radar 129.52	MÜNCHEN Radar 124.05
--------------------------	--------------------------	-------------------------	-------------------------

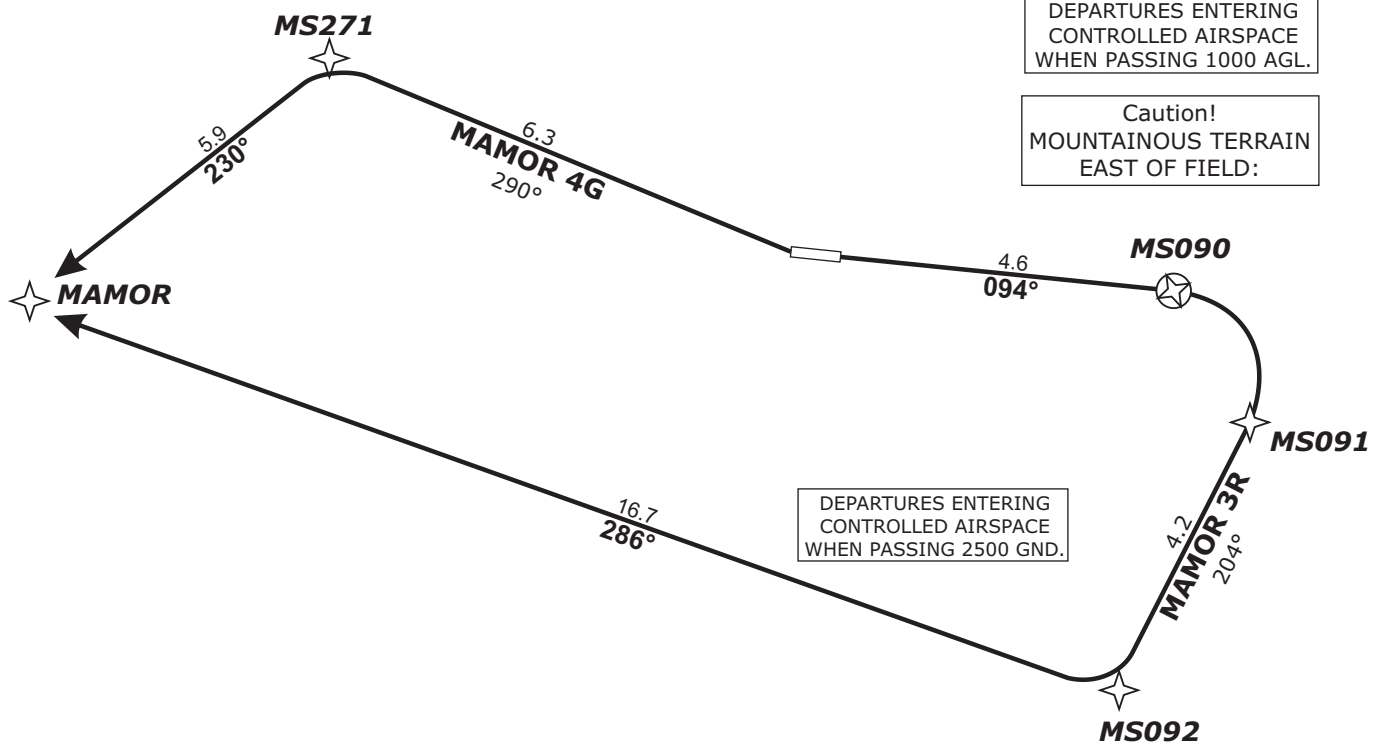
TRANS LEVEL: BY ATC TRANS ALT: 5000' APT Elevation: 1054'

MAMOR 3R - MAMOR THREE ROMEO (25.5 NM)
MAMOR 4G - MAMOR FOUR GOLF (12.2 NM)



BEARINGS AND TRACKS ARE MAGNETIC.
 ALTITUDES IN FEET MSL

DEPARTURES ENTERING CONTROLLED AIRSPACE WHEN PASSING 1000 AGL.
 Caution! MOUNTAINOUS TERRAIN EAST OF FIELD:



DEPARTURES ENTERING CONTROLLED AIRSPACE WHEN PASSING 2500 GND.

Procedure not to be used during activity of NLFS

Do not use for real life navigation!

Revision: 2014-12-11 - Change: note modified

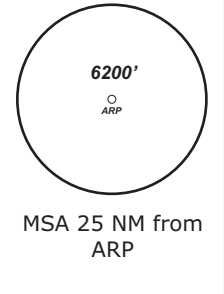
Report passing 3600 to Straubing Info and contact München Radar Initial climb 5000'

SID	RWY	ROUTING	GPS/FMS RNAV	REMARKS
MAMOR 3R	09	Climb on track 094° to MS090; RT, via MS091 on track 204° to MS092, RT, on track 286° to MAMOR.	[A1500+] - MS090[R]- MS091 - MS092[R] - MAMOR.	
MAMOR 4G	27	Climb on track 290° to MS271; LT, on track 230° to MAMOR.	[A1500+] - MS271[L] - MAMOR.	PDG 5.0% (305ft/NM) due to MEA

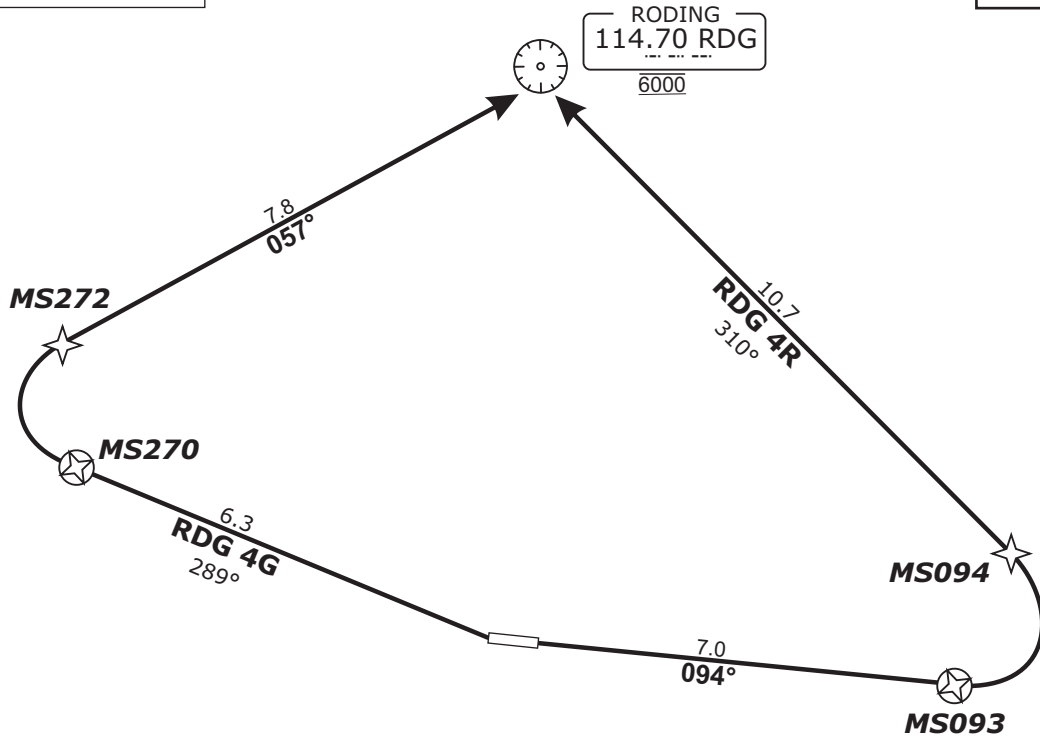
STRAUBING ATIS 135.52	STRAUBING Info 127.15	MÜNCHEN Radar 129.52	MÜNCHEN Radar 124.05
--------------------------	--------------------------	-------------------------	-------------------------

TRANS LEVEL: BY ATC TRANS ALT: 5000' APT Elevation: 1054'

RDG 4R - RODING FOUR ROMEO (17.7 NM)
RDG 4G - RODING FOUR GOLF (14.1 NM)



BEARINGS AND TRACKS ARE MAGNETIC.
 ALTITUDES IN FEET MSL



DEPARTURES ENTERING
 CONTROLLED AIRSPACE
 WHEN PASSING 1000 AGL.

Caution!
 MOUNTAINOUS TERRAIN
 EAST OF FIELD:

Procedure not to be used
 during activity of NLFS

Do not use for real life navigation!

Revision: 2014-12-11 - Change: note modified

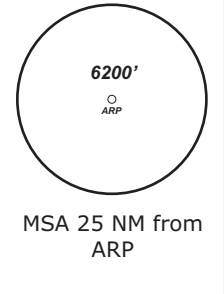
Report passing 3600 to Straubing Info and contact München Radar Initial climb 6000'

SID	RWY	ROUTING	GPS/FMS RNAV	REMARKS
RDG 4R	09	Climb on track 095° to MS093; LT, via MS094 on track 311° to RDG. Cross RDG at 6000.	[A1500+] - <u>MS093[L]</u> - MS094 - RDG[A6000].	PDG 4.0% (240ft/NM) due to MEA
RDG 4G	27	Climb on track 289° to MS270; RT, via MS270 on track 057° to RDG, cross RDG at 6000.	[A1500+] - <u>MS270[R]</u> - MS272 - RDG[A6000].	PDG 5.0% (305ft/NM) due to MEA

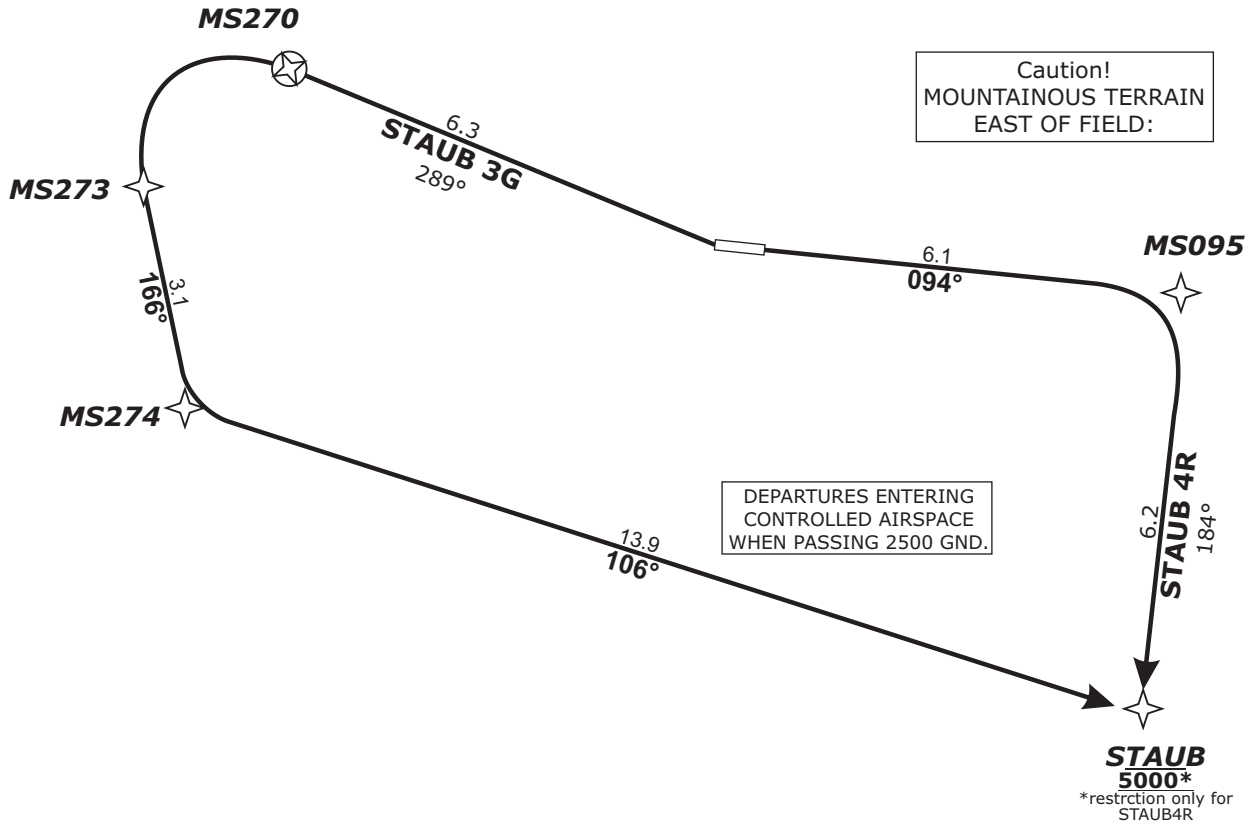
STRAUBING ATIS 135.52	STRAUBING Info 127.15	MÜNCHEN Radar 129.52	MÜNCHEN Radar 124.05
--------------------------	--------------------------	-------------------------	-------------------------

TRANS LEVEL: BY ATC TRANS ALT: 5000' APT Elevation: 1054'

STAUB 4R - STAUB FOUR ROMEO (12.3 NM)
STAUB 3G - STAUB THREE GOLF (23.3 NM)



BEARINGS AND TRACKS ARE MAGNETIC.
 ALTITUDES IN FEET MSL



Caution!
 MOUNTAINOUS TERRAIN
 EAST OF FIELD:

DEPARTURES ENTERING
 CONTROLLED AIRSPACE
 WHEN PASSING 2500 GND.

Procedure not to be used
 during activity of NLFS

DEPARTURES ENTERING
 CONTROLLED AIRSPACE
 WHEN PASSING 1000 AGL.

Do not use for real life navigation!

Revision: 2014-12-11 - Change: note modified

Report passing 3600 to Straubing Info and contact München Radar **Initial climb 5000'**

SID	RWY	ROUTING	GPS/FMS RNAV	REMARKS
STAUB 4R	09	Climb on track 094° to MS095; RT, on track 184° to STAUB, cross STAUB at 5000.	[A1500+] - <u>MS095[R]</u> - STAUB[A5000].	PDG 5.6% (340ft/NM) due to MEA.
STAUB 3G	27	Climb on track 289° to MS270; LT, via MS273 on track 166° to MS274, LT, on track 106° to STAUB.	[A1500+] - <u>MS270[L]</u> - MS273 - <u>MS274[L]</u> - STAUB.	

