

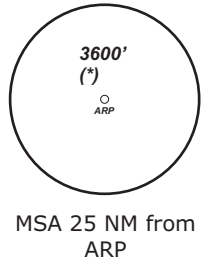
	EGGENFELDEN ATIS 125.07	EGGENFELDEN INFO 120.30	MÜNCHEN Radar 124.05	MÜNCHEN Radar 129.55
--	----------------------------	----------------------------	-------------------------	-------------------------

MISSED APCH: On track 264° to ME023 climbing to 3500', RT, via ME024 on track 116° to BIBAG climbing to 5000'.
RNAV: ME023 - [3500,R] - ME024 - BIBAG[A5000]

Final
Apch Crs
264°

MDA(H)
*Refer to
Minimums*

Apt.Elev. 1342'



Alt Set: hPa (IN on req)

Trans level: By ATC

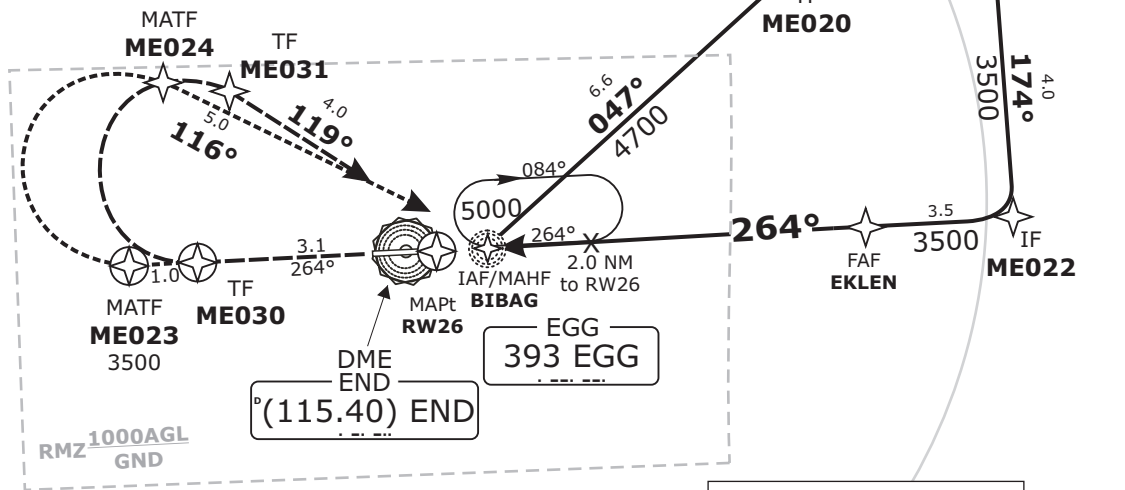
Trans alt: 5000'

BEARINGS ARE MAGNETIC.
ALTITUDES IN FEET MSL

BARO-VNAV OPERATIONS
not authorized below -15°C.

**DME
REQUIRED.**

Do not use for real life navigation!

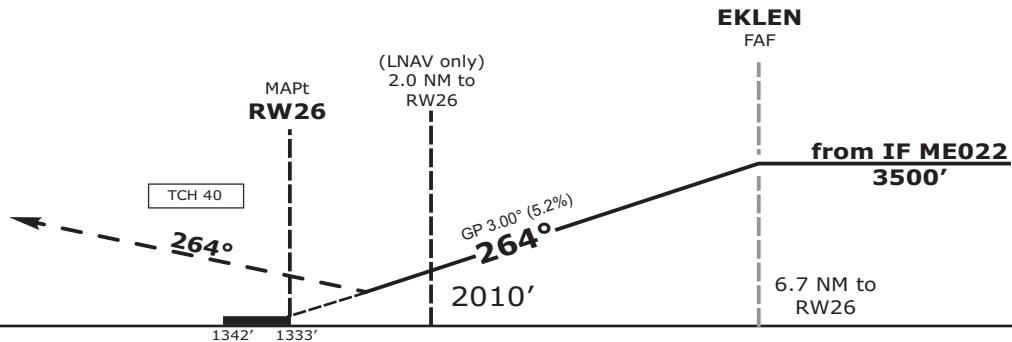


APCH ONLY AUTHORIZED
WHEN EDME QNH
IS AVAILABLE

APCH RWY 08:
EXECUTE APCH RWY 26
FOLLOWED BY CIRCLING
SOUTH OF AERODROME.

PROCEDURE NOT TO BE
USED DURING ACTIVITY
OF NLSF

ARRIVALS LEAVING
CONTROLLED AIRSPACE
WHEN PASSING 1000 AGL.



OCA (OCH)		A	B									
LNAV		1900'	1900'									
		(560)	(560)									
LNAV/VNAV		1880'	1880'									
		(550)	(550)									
CIRCLING*		1920'	2010'									
		(580)	(670)									
				DIST THR / RW26	2	3	4	5	6			
				ALTITUDE	2010'	2330'	2650'	2970'	3290'			
				Timing not authorized for defining the MAPt.								
				GS	kt				80	100	120	140
				EKLEN - RW26 (6.7 NM)	MIN:SEC		5:02	4:01	3:21	2:52		
				Rate of Descent (5.2%)	ft/MIN		420	530	640	740		

*SOUTH OF AERODROME ONLY