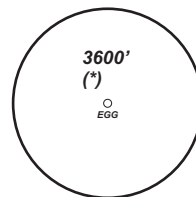


		EGGENFELDEN ATIS 125.07	EGGENFELDEN INFO 120.30	MÜNCHEN Radar 124.05	MÜNCHEN Radar 129.55
NDB EGG 393.0	VOR/DME END 115.40	Final Apch Course 264°	FAF EKLEN 6.8 DME END 3500'	MDA(H) 1920' (580)	Apt.Elev. 1342'



MSA 25 NM from EGG NDB
(*) German territory only

MISSED APCH: Climb straight ahead to 4.0 DME END or 3000, RT to EGG NDB / BIBAG climbing to 5000.

Alt Set: hPa (IN on req)

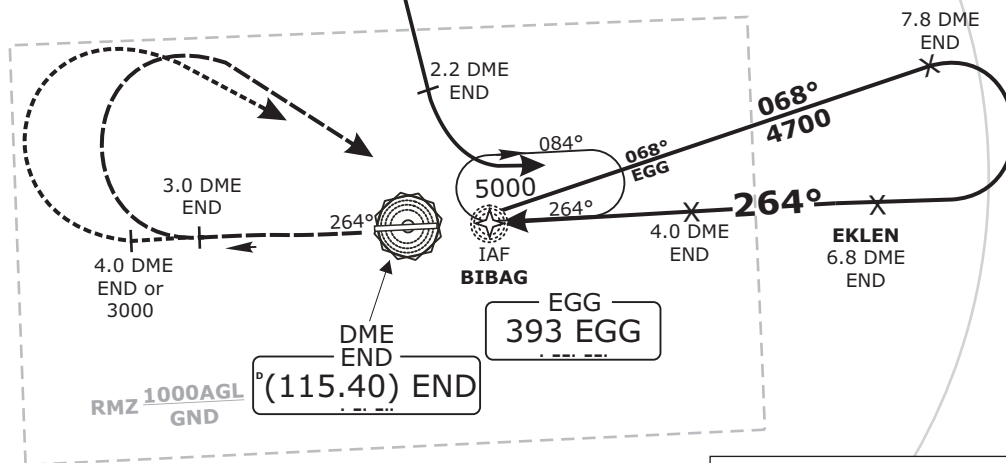
Trans level: By ATC

Trans alt: 5000'

BEARINGS ARE MAGNETIC.
ALTITUDES IN FEET MSL

**DME
REQUIRED.**

FROM STAUB INT:
LT AT 2.2 DME END TO
INTERCEPT TRACK 068° EGG
FOR STANDARD APCH:



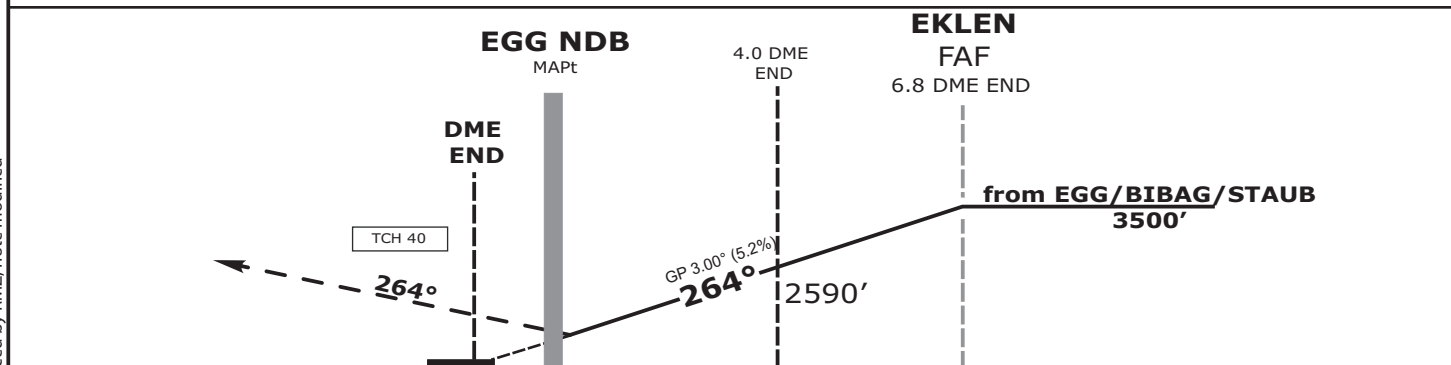
APCH ONLY AUTHORIZED
WHEN EDME QNH
IS AVAILABLE

APCH RWY 08:
EXECUTE APCH RWY 26
FOLLOWED BY CIRCLING
SOUTH OF AERODROME.

PROCEDURE NOT TO BE
USED DURING ACTIVITY
OF NLFS

ARRIVALS LEAVING
CONTROLLED AIRSPACE
WHEN PASSING 1000 AGL.

Do not use for real life navigation!



OCA (OCH)	A	B				DME END	2	3	4	5	6					
NDB-DME (GPS)	1920'	1920'				DIST THR	1.8	2.8	3.8	4.8	5.8					
	(580)	(580)				ALTITUDE	1950'	2270'	2590'	2910'	3220'					
						Timing not authorized for defining the MAPt.										
						GS	kt				80	100	120	140		
CIRCLING*	1920'	2010'				D4.0 END - EGG NDB	MIN:SEC				2:15	1:48	1:30	1:17		
	(580)	(670)				Rate of Descent (5.2%)	ft/MIN				420	530	640	740		

*SOUTH OF AERODROME ONLY