

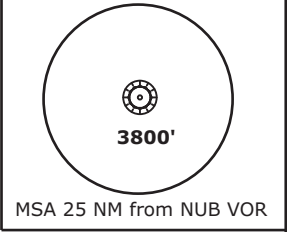
TRANS LEVEL: BY ATC TRANS ALT: 5000'	NÜRNBERG ATIS 123.07	NÜRNBERG Ground 118.10	NÜRNBERG Tower 118.30	MÜNCHEN Radar 129.52
---	-------------------------	---------------------------	--------------------------	-------------------------

FLY THE TRANSITION AS CONTINUOUS DESCENT OPERATION (CDO)

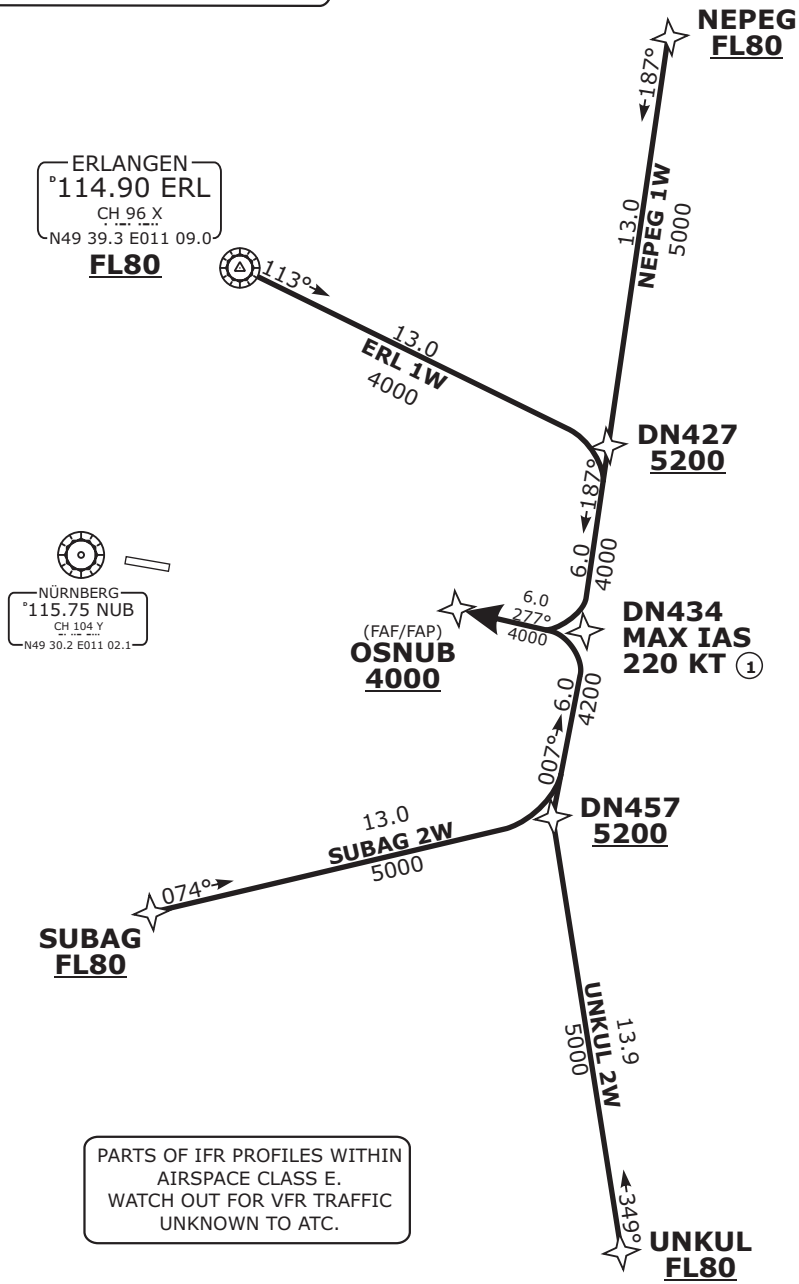
REMARK

1. USE OF TRANSITION PROCEDURES ONLY WHEN CLEARED BY ATC.
2. WHEN CLEARED FOR "TRANSITION AND PROFILE" AIM FOR A LOW NOISE CONTINUOUS DECENT OPERATION (CDO) WITHIN THE CONSTRAINTS AS LAID DOWN IN THE PROCEDURE DESCRIPTION.

FOR OPERATIONAL REGULATIONS REFER TO AIP ENR 1.5



Do not use for real life navigation!



① Arrivals from SUBAG, UNKUL: **DN434 4200**

PARTS OF IFR PROFILES WITHIN AIRSPACE CLASS E. WATCH OUT FOR VFR TRAFFIC UNKNOWN TO ATC.

BEARINGS AND TRACKS ARE MAGNETIC. ALTITUDES IN FEET MSL