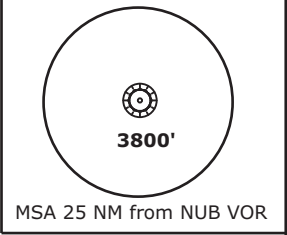


TRANS LEVEL: BY ATC TRANS ALT: 5000'	NÜRNBERG ATIS 123.07	NÜRNBERG Ground 118.10	NÜRNBERG Tower 118.30	MÜNCHEN Radar 129.52
---	-------------------------	---------------------------	--------------------------	-------------------------

FLY THE TRANSITION AS
CONTINUOUS DESCENT OPERATION (CDO)

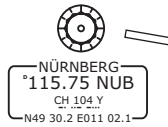
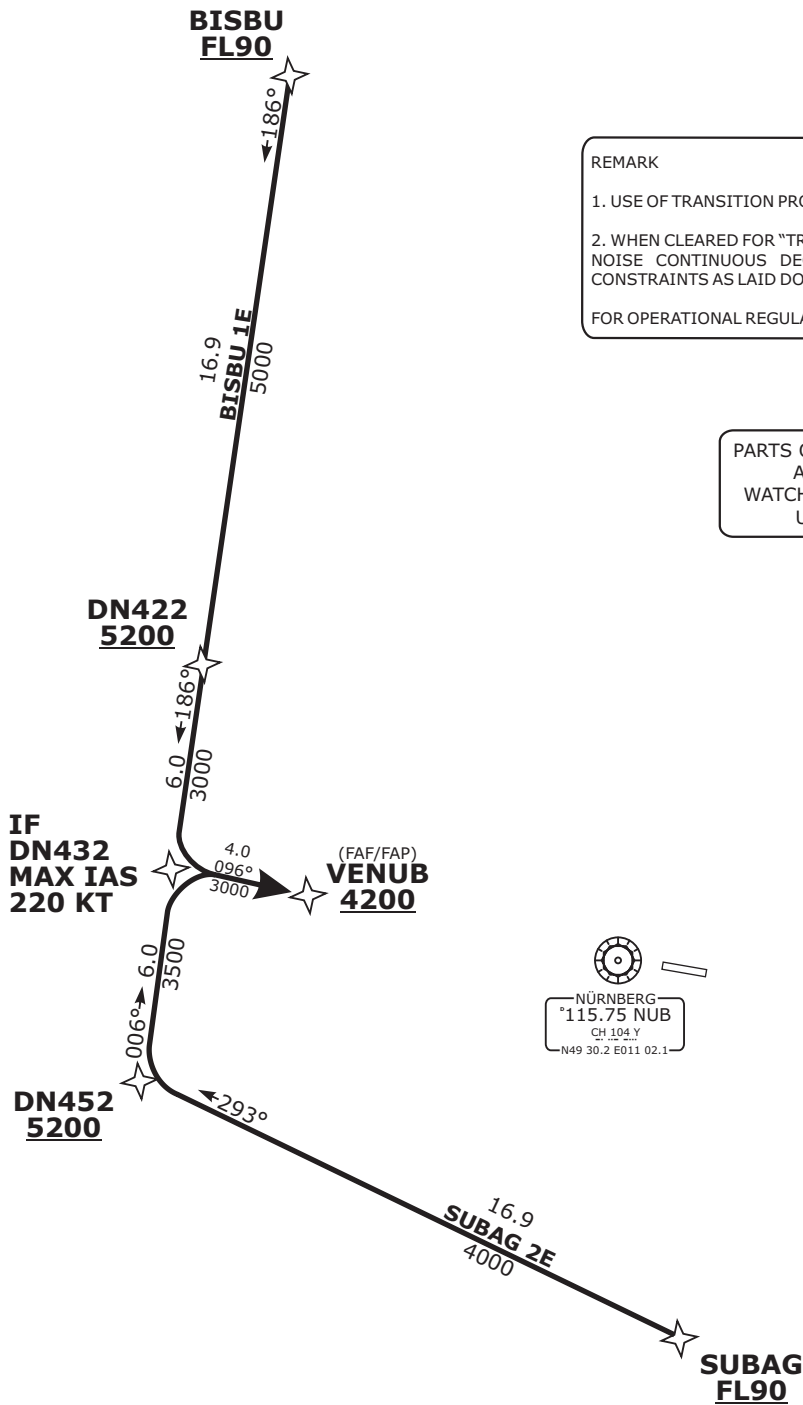


REMARK

1. USE OF TRANSITION PROCEDURES ONLY WHEN CLEARED BY ATC.
2. WHEN CLEARED FOR "TRANSITION AND PROFILE" AIM FOR A LOW NOISE CONTINUOUS DESCENT OPERATION (CDO) WITHIN THE CONSTRAINTS AS LAID DOWN IN THE PROCEDURE DESCRIPTION.

FOR OPERATIONAL REGULATIONS REFER TO AIP ENR 1.5

PARTS OF IFR PROFILES WITHIN
AIRSPACE CLASS E.
WATCH OUT FOR VFR TRAFFIC
UNKNOWN TO ATC.



Do not use for real life navigation!

BEARINGS AND TRACKS ARE MAGNETIC.
ALTITUDES IN FEET MSL