

Do not use for real life navigation!

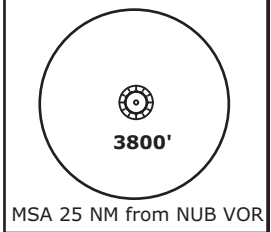
TRANS LEVEL: BY ATC
TRANS ALT: 5000'

NÜRNBERG ATIS
123.07

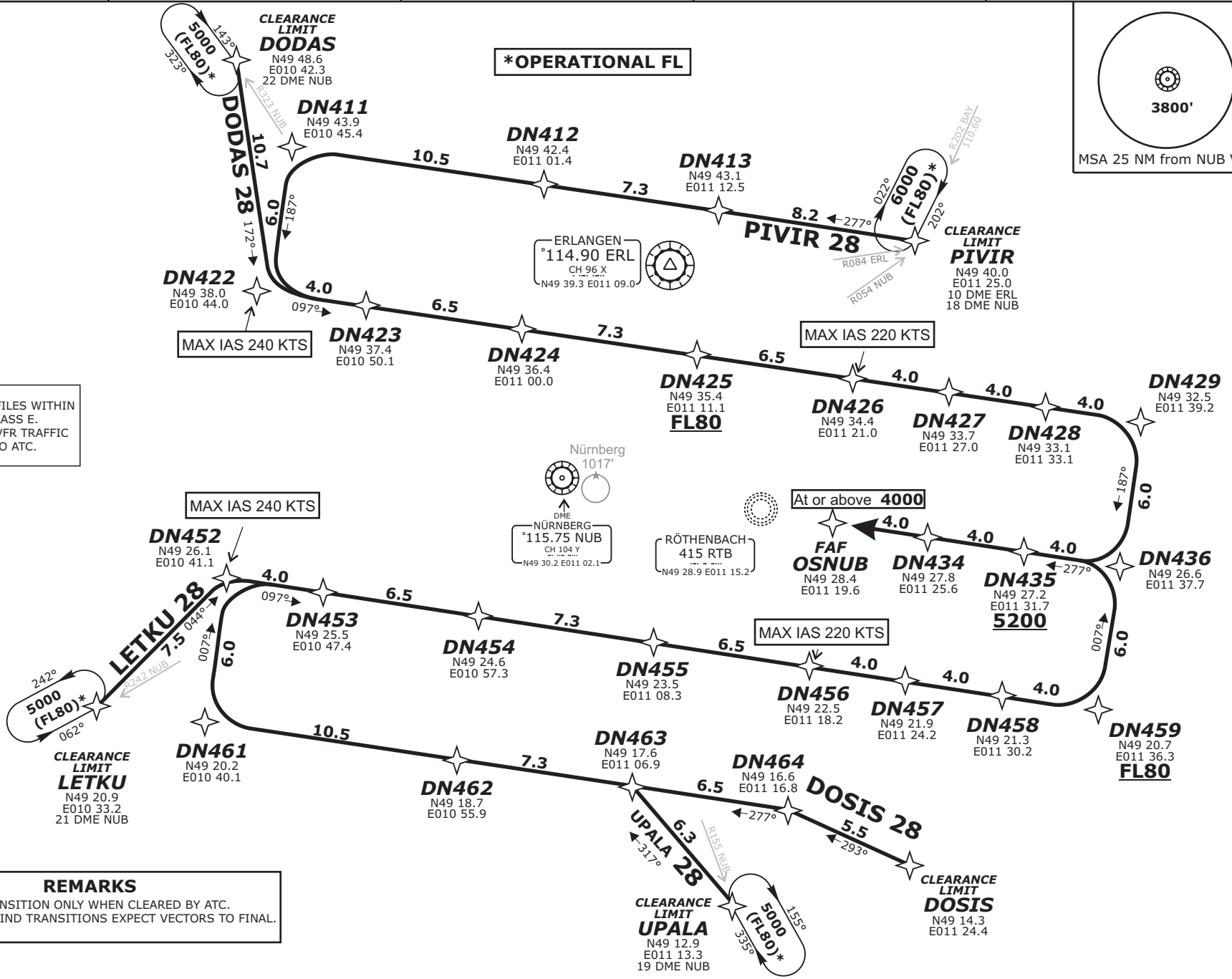
NÜRNBERG Ground
118.10

NÜRNBERG Tower
118.30

MÜNCHEN Radar
129.52



***OPERATIONAL FL**



PARTS OF IFR PROFILES WITHIN AIRSPACE CLASS E. WATCH OUT FOR VFR TRAFFIC UNKNOWN TO ATC.

REMARKS
1. USE OF TRANSITION ONLY WHEN CLEARED BY ATC.
2. ON DOWNWIND TRANSITIONS EXPECT VECTORS TO FINAL.

Nürnberg, GERMANY
NÜRNBERG



Eff: 30 MAY 13

EDDN / NUE
RNAV TRANSITIONS RWY 28

© VATSIM Germany / Diemar Brhnschwitz <nav@vatsim-germany.org> / Datenquelle: D55 GmbH

www.vatsim-germany.org