

TRANS LEVEL: BY ATC
TRANS ALT: 5000'

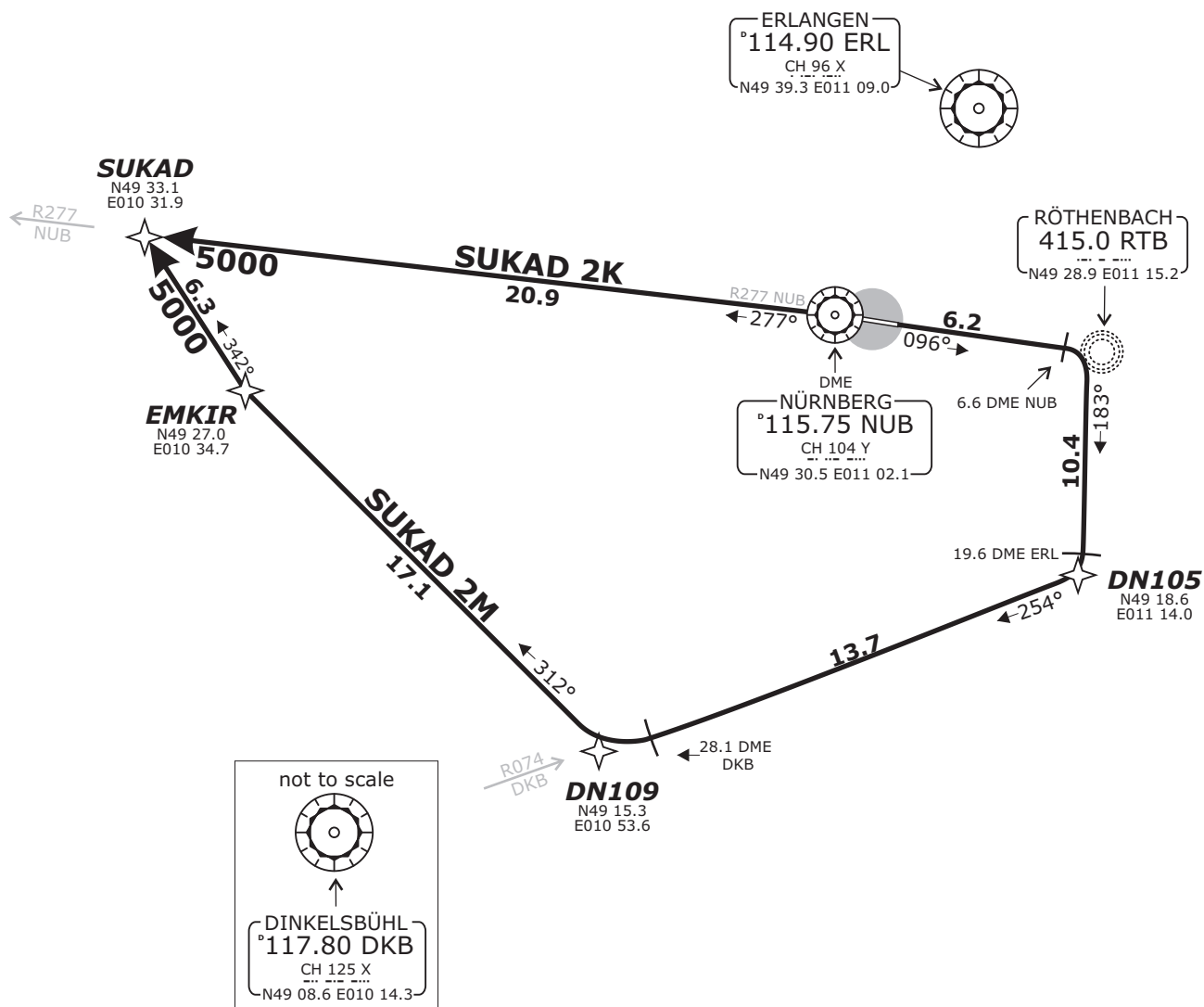
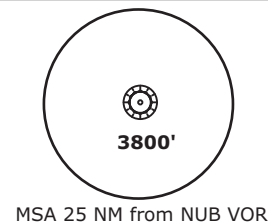
NÜRNBERG ATIS
123.07

NÜRNBERG Ground
118.10

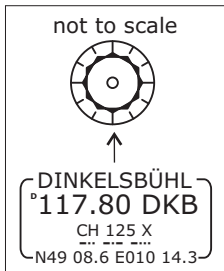
NÜRNBERG Tower
118.30

MÜNCHEN Radar
129.52

SUKAD 2K - SUKAD TWO KILO [SUKA2K] (20.9 NM)
SUKAD 2M - SUKAD TWO MIKE [SUKA2M] (53.7 NM)



Do not use for real life navigation!



BEARINGS AND TRACKS ARE MAGNETIC.
ALTITUDES IN FEET MSL

PARTS OF IFR PROFILES WITHIN
AIRSPACE CLASS E.
WATCH OUT FOR VFR TRAFFIC
UNKNOWN TO ATC.

SPEED RESTRICTION
MAX 250 KTS below FL100
or as by ATC.
Not applicable within airspace C.

Pilots of GPS/FMS-RNAV-equipped aircraft shall, if possible, use the supplementary GPS/FMS RNAV procedures which are described following the text "GPS / FMS RNAV" and charted. The ground-based navigation aids required for the use of the respective conventional flight procedure and the associated aircraft equipment shall remain in operation at all times

Contact München Radar immediately after take-off!

Initial climb clearance FL70.

SID	RWY	ROUTING	GPS/FMS RNAV	REMARKS
SUKAD 2K	28	On R277 NUB to SUKAD.	[A1500+] - SUKAD.	Only for DEST EDDF, EDDE or ETOU and flights with Y FPL
SUKAD 2M	10	On track 096° inbound RTB; at 5.3 DME NUB RT, on track 183° RTB to 19.6 DME ERL, RT, on R074 DKB to 28.1 DME DKB, RT, on track 312° to EMKIR, RT, on track 342° to SUKAD.	[A1500+] - RTB[R] - DN105[R] - DN109[R] - EMKIR[R] - SUKAD.	1. Only for DEST EDDF, EDDE or ETOU and flights with Y FPL 2. After 28.1 DME DKB RNAV equipment necessary.