

TRANS LEVEL: BY ATC
TRANS ALT: 5000'

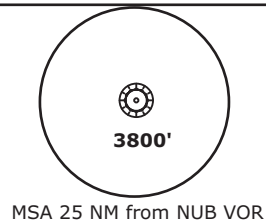
NÜRNBERG ATIS
123.07

NÜRNBERG Ground
118.10

NÜRNBERG Tower
118.30

MÜNCHEN Radar
129.52

DKB 4K - DINKELSBÜHL FOUR KILO (40.4 NM)
DKB 4M - DINKELSBÜHL FOUR MIKE (57.0 NM)



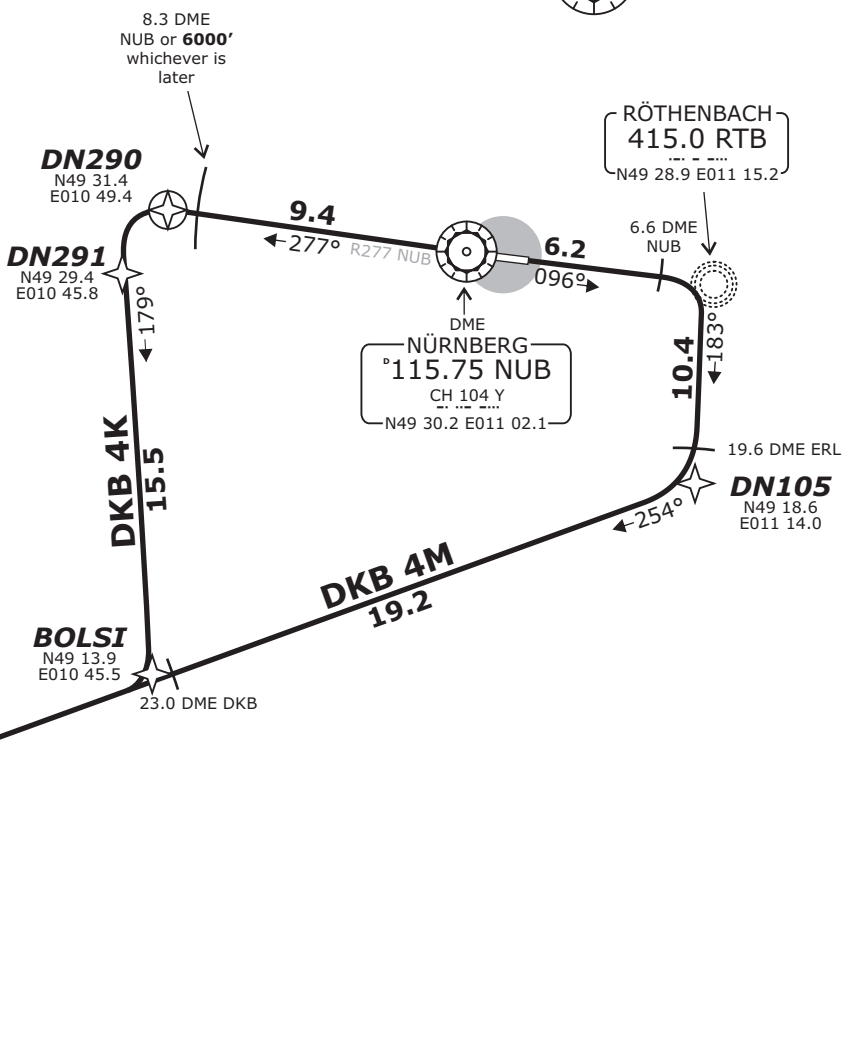
ERLANGEN
°114.90 ERL
CH 96 X
N49 39.3 E011 09.0



SPEED RESTRICTION
MAX 250 KTS below FL100
or as by ATC.
Not applicable within airspace C.

BEARINGS AND TRACKS ARE MAGNETIC.
ALTITUDES IN FEET MSL

PARTS OF IFR PROFILES WITHIN
AIRSPACE CLASS E.
WATCH OUT FOR VFR TRAFFIC
UNKNOWN TO ATC.



Do not use for real life navigation!

Pilots of GPS/FMS-RNAV-equipped aircraft shall, if possible, use the supplementary GPS/FMS RNAV procedures which are described following the text "GPS / FMS RNAV:" and charted. The ground-based navigation aids required for the use of the respective conventional flight procedure and the associated aircraft equipment shall remain in operation at all times

Contact München Radar immediately after take-off! **Initial climb clearance FL70.**

| SID | RWY | ROUTING | GPS/FMS RNAV | REMARKS |
|---------------|-----------|--|---|---|
| DKB 4K | 28 | On R277 NUB to 8.3 DME NUB or 6000, whichever is later; LT, on on track 179° to BOLSI, RT, on track 254° to DKB. | [A1500+] - DN290 - [A6000+;L] - DN291 - BOLSI[R] - DKB. | 1. Not available for flights to continue via T104 or Y161 2. After 8.3 DME NUB BRNAV equipment necessary |
| DKB 4M | 10 | On track 096° inbound RTB; at 6.6 DME NUB RT, on track 183° RTB to 19.6 DME ERL; RT, on R074 DKB to DKB. | [A1500+] - RTB[R] - DN105[R] - DKB. | Not available for flights to continue via T104 or Y161. |

Revision: 2016-06-23 - Change: minor