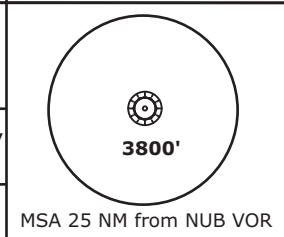


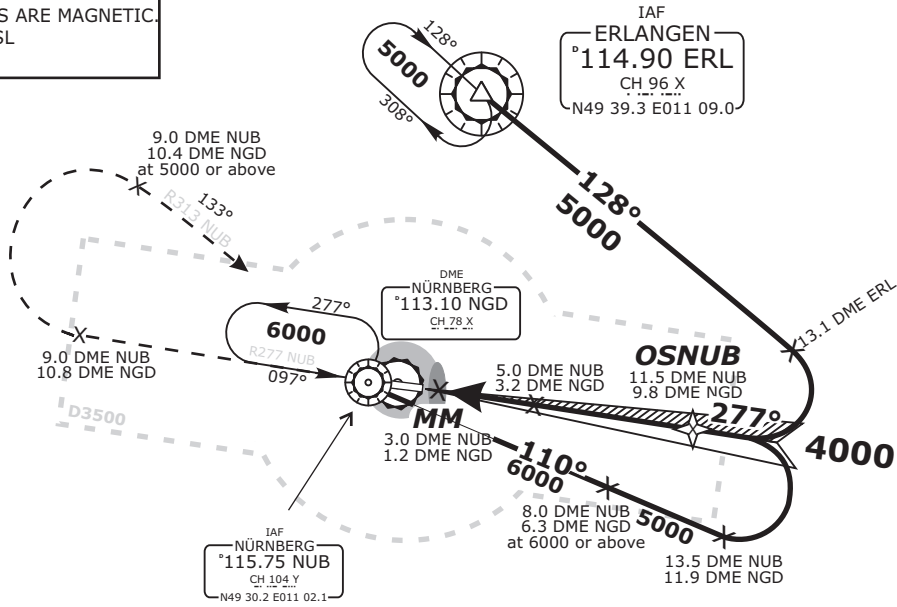
TRANS LEVEL: BY ATC TRANS ALT: 5000'		NÜRNBERG ATIS 123.07	NÜRNBERG Ground 118.10	NÜRNBERG Tower 118.30	MÜNCHEN Radar 129.52
---	--	-------------------------	---------------------------	--------------------------	-------------------------

DME NGD 113.10	DME NUB 115.75	Final Apch Course 277°	FAF OSNUB 4000'	MDA(H) <i>Refer to Minimums</i>	Apt.Elev. 1046' Rwy Elev. 1046'
-----------------------------	-----------------------------	----------------------------------	------------------------------	--	------------------------------------

MISSED APCH: Climb on R277° NUB to 9.0 DME NUB, RT, on R313 NUB to NUB VOR/DME, climbing to 6000'. Cross 9.0 DME inbound NUB at 5000 or above.

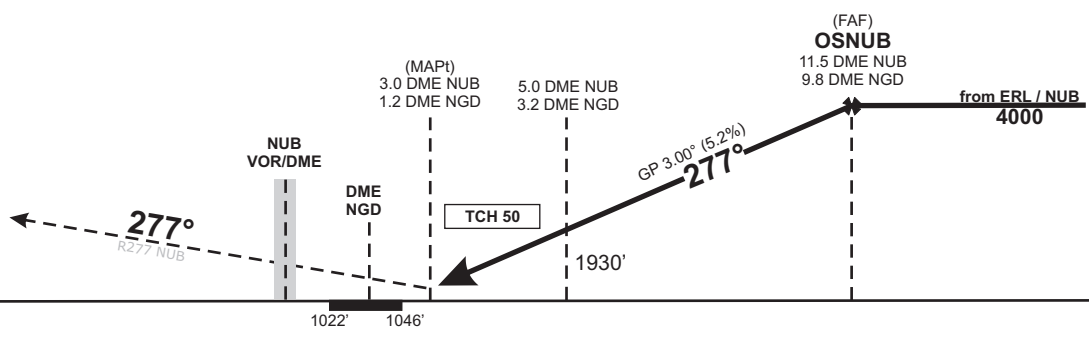
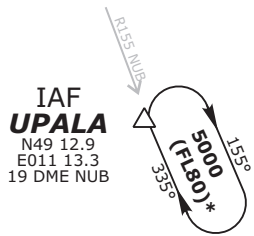


BEARINGS AND TRACKS ARE MAGNETIC.
ALTITUDES IN FEET MSL



IN CASE OF RADIO COMMUNICATION FAILURE
APPROACH FROM IAF UPALA:
PROCEED TO ERL VOR/DME AT FL80, OVER ERL LT
AND FOLLOW VOR APPROACH TO RWY 28

PARTS OF IFR PROFILES WITHIN
AIRSPACE CLASS E.
WATCH OUT FOR VFR TRAFFIC
UNKNOWN TO ATC.



OCA (OCH)	A	B	C	D	DME NUB	4	5	6	7	8	9	10	11
VOR/DME	1670 (620)	1670 (620)	1670 (620)	1670 (620)	DIST THR	1.6	2.6	3.6	4.6	5.6	6.6	7.6	8.6
CIRCLING*	1670 (620)	1720 (670)	1840 (800)	1940 (890)	ALTITUDE	1610	1930	2250	2570	2880	3200	3520	3840
					GS	kts		80	100	120	140	160	180
					5.0 DME NUB - 3.0 DME NUB (2.0 NM)	MIN:SEC		1:30	1:12	1:00	0:51	0:45	0:40
*North of aerodrome only					Rate of descent (5.2%)	ft/MIN		420	530	640	740	850	960

Timing not authorized for defining the MAPt.

Do not use for real life navigation!

Revision: 2013-05-30 - Change: MSA, note added