

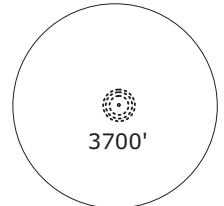
München RADAR EDDM_N_APP 123.90	München RADAR EDDM_S_APP 127.95	München RADAR EDDM_1_APP 128.02	München RADAR EDDM_2_APP 120.77	EDMM_CTR 124.05	München RADAR EDMM_R_CTR 132.55	EDMM_K_CTR 134.15
---------------------------------------	---------------------------------------	---------------------------------------	---------------------------------------	--------------------	---------------------------------------	----------------------

Apt Elev: 1487'

Trans level: By ATC

Trans alt: 5000'

- KPT 3E** - KEMPTEN THREE ECHO
- KPT 2N** - KEMPTEN TWO NOVEMBER
- KPT 2P** - KEMPTEN TWO PAPA
- KPT 3Q** - KEMPTEN THREE QUEBEC
- KPT 2T** - KEMPTEN TWO TANGO
- KPT 2S** - KEMPTEN TWO SIERRA



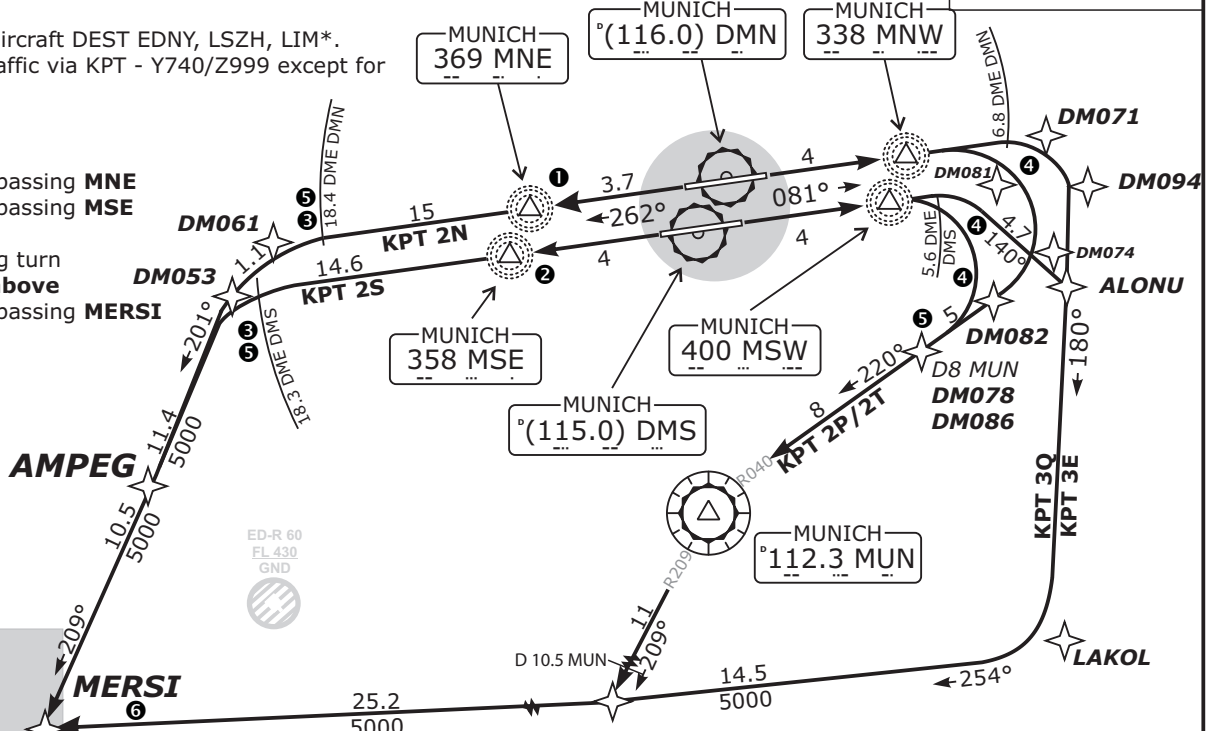
MSA 25NM MNW

REMARKS:

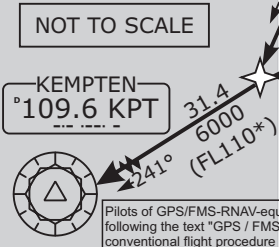
1. Mandatory for jet aircraft DEST EDNY, LSZH, LIM*.
2. Not available for traffic via KPT - Y740/Z999 except for DEST LIML/C.

RESTRICTIONS:

- ① MAX 220 KT until passing MNE
- ② MAX 220 KT until passing MSE
- ③ MAX 250 KT
- ④ MAX 230 KT during turn
- ⑤ Cross at FL70 or above
- ⑥ MAX 250 KT until passing MERSI



Do not use for real life navigation!



Pilots of GPS/FMS-RNAV-equipped aircraft shall, if possible, use the supplementary GPS/FMS RNAV procedures which are described following the text "GPS / FMS RNAV:" and charted. The ground-based navigation aids required for the use of the respective conventional flight procedure and the associated aircraft equipment shall remain in operation at all times

REMARKS:
NAVAID addition for real frequencies available on <http://www.vacc-sag.org/airport/EDDM> if not installed use old frequencies:
MAH - 108.4 / DMS - 108.6 / ILS08R - 110.9
MIQ - 426.5 / MSE - 385.0 / ILS08L - 110.3

Contact München Radar when advised by Tower.

Initial climb clearance FL70

SID	RWY	ROUTING	GPS/FMS RNAV
KPT 3E	08R	On RWY track to 1900, via LO MSW to 5.6 DME DMS or 4000, whichever is later, RT, on track 140° to ALONU; RT, on track 180° to LAKOL. During turn MAX IAS 230 kt, RT, on track 254° to OBAXA, RT, on track 264° to MERSI, LT, on track 241° to KPT	[A1900+] - DM081[A4000+; R] - ALONU[K230-; R] - LAKOL[R] - OBAXA[R] - MERSI[K250-; L] - KPT.
KPT 2P	08R	On RWY track to 1900, via LO MSW to 5.6 DME DMS or 4000, whichever is later, RT, on R040 MUN to MUN. Cross 8.0 DME MUN at FL70 or above. LT, on R209 MUN to 10.5 DME MUN, RT, on track 264° to MERSI, LT, on track 241° to KPT.	[A1900+] - DM081[A4000+; R] - DM082[K230-; R] - DM086[F070+] - MUN[L] - OBAXA[R] - MERSI[K250-; L] - KPT.
KPT 2N	26R	On RWY track to 1900, on track 262° via LO MNE to 18.4 DME DMN, LT, on track 201° to AMPEG; RT, on track 209° to MERSI, RT, on track 241° to KPT. Cross 18,4 DME DMN at FL070 or above.	[A1900+] - MNE[K220-] - DM061[F070;K250-; L] - AMPEG[R] - MERSI[R] - KPT.
KPT 3Q	08L	On RWY track to 1900, via LO MNW to 6.8 DME DMN or 4000, whichever is later, RT, on track 180° to LAKOL. During turn MAX IAS 230 kt. RT, on track 254° to OBAXA, RT, on track 264° to MERSI, LT, on track 241° to KPT	[A1900+] - DM071[A4000+; R] - DM094[K230-; R] - LAKOL[R] - OBAXA[R] - MERSI[K250-; L] - KPT.
KPT 2T	08L	On RWY track to 1900, via LO MNW to 6.8 DME DMN or 4000, whichever is later, RT, on R040 MUN to MUN. During turn MAX IAS 230 kt. LT, on R209 MUN to 10.5 DME MUN, RT, on track 264° to MERSI, LT, on track 241° to KPT.	[A1900+] - DM071[A4000+; R] - DM074[K230-; R] - DM078[F070+] - MUN[L] - OBAXA[R] - MERSI[K250-; L] - KPT.
KPT 2S	26L	On RWY track to 1900, on track 262° via LO MSE to 18.3 DME DMS, LT, on track 201° to AMPEG; RT, on track 209° to MERSI, RT, on track 241° to KPT. Cross 18,3 DME DMS at FL070 or above.	[A1900+] - MSE[K220-] - DM053[F070;K250-; L] - AMPEG[R] - MERSI[R] - KPT.

Revision: 2015-06-25 - Change: Minor