

VATSIM Germany Standard Instrument Departure Chart

Karlsruhe/Baden-Baden EDSB

Transition Altitude: 5000 ft.

ATIS 121.275

Baden Ground 121.820

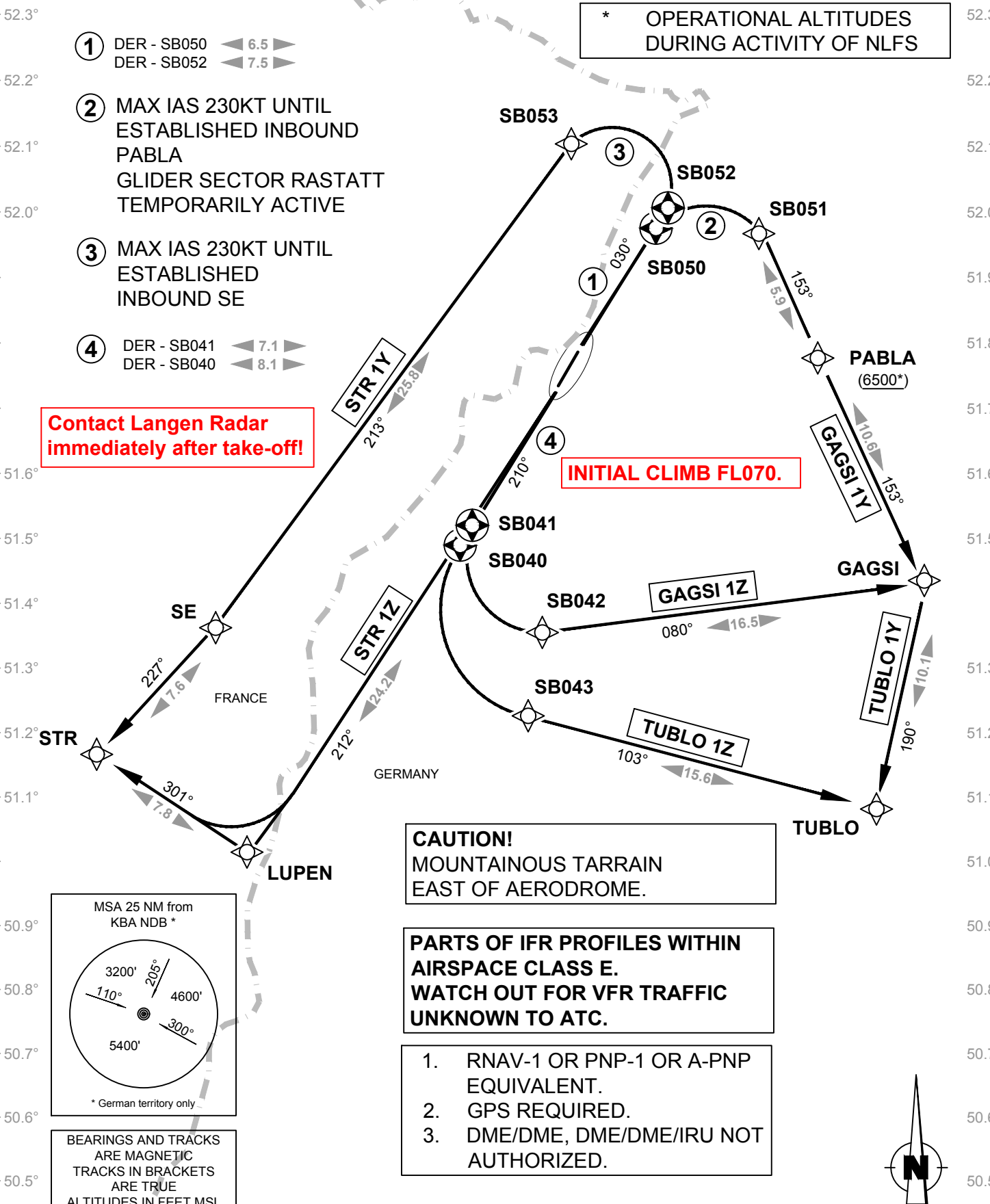
Baden Tower 134.100

Langen Radar 125.05

SID RNAV (GPS) RWY 03/21

VAR: 1° E

52.46.1° 6.2° 6.3° 6.4° 6.5° 6.6° 6.7° 6.8° 6.9° 7.0° 7.1° 7.2° 7.3° 7.4° 7.5° 7.6° 7.7° 7.8° 7.9° 8.0° 8.1° 8.2° 8.3° 8.4°



VATSIM Germany Standard Instrument Departure Chart

Karlsruhe/Baden-Baden EDSB

Transition Altitude: 5000 ft.

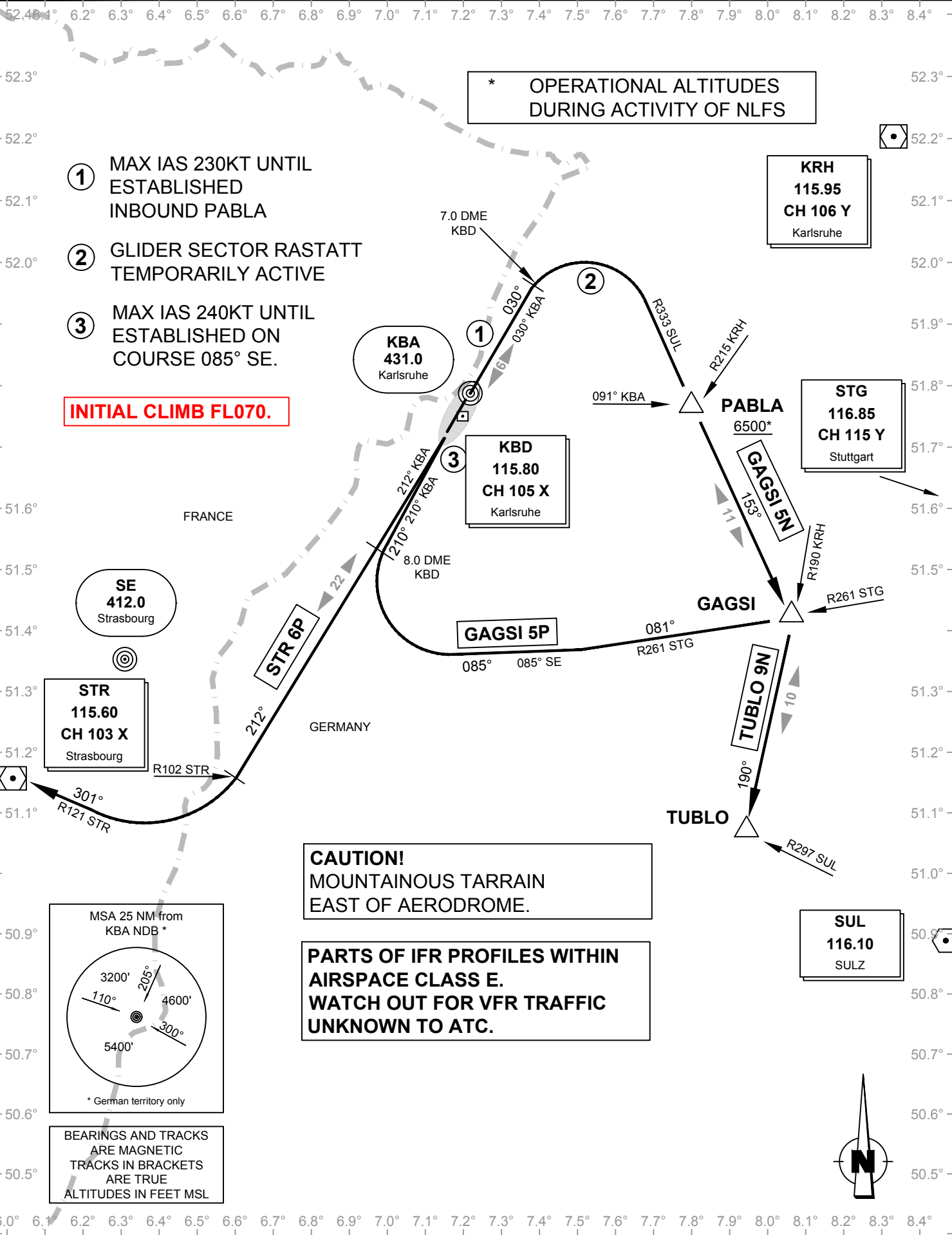
ATIS 121.275

Baden Ground 121.820

Baden Tower 134.100

SID RWY 03/21

VAR: 1° E



VATSIM Germany
Standard Instrument Departure Chart
Karlsruhe/Baden-Baden
EDSB
SID RNAV (GPS)
03/21

Designator	Route	After Take-Off		Remarks
		Climb to	Contact	
RWY 03				
GAGSI 1Y	GAGSI ONE YANKEE Climb on course 030° to SB050; RT, direct to SB051; to PABLA; to GAGSI. MAX. IAS 230kt until established inbound PABLA.	FL 070	Langen Radar 125.050*	<ol style="list-style-type: none"> 1. During activation of glider sector Rastatt cross SB050 at or above 4000ft (PDG 7.6% (462 ft/nm)). 2. During activity of NLFS cross PABLA at or above 6500ft (PDG 6.0% (364 ft/nm)). 3. If unable to comply advise ATC prior start-up.
STR 1Y	STRASBOURG ONE YANKEE Climb on course 030° to SB052; LT, direct to SB053; to SE; to STR. MAX. IAS 230kt until established inbound SE.			<ol style="list-style-type: none"> 1. During glider activities at Hagenau climb with PDG 9.6% (583 ft/nm) or more until passing FL70. 2. If unable to comply advise ATC prior start-up.
TUBLO 1Y	TUBLO ONE YANKEE Climb on course 030° to SB050; RT, direct to SB051; to PABLA; to GAGSI; to TUBLO. MAX. IAS 230kt until established inbound PABLA.			<ol style="list-style-type: none"> 1. During activation of glider sector Rastatt cross SB050 at or above 4000ft (PDG 7.6% (462 ft/nm)). 2. During activity of NLFS cross PABLA at or above 6500ft (PDG 6.0% (364 ft/nm)). 3. If unable to comply advise ATC prior start-up.

RWY 21

GAGSI 1Z	GAGSI ONE ZULU Climb on course 210° to SB041; LT, direct to SB042; to GAGSI. Climb with 5.4% (328 ft/nm) or more until passing 5100.	FL 070	Langen Radar 125.050*	<ol style="list-style-type: none"> 1. PDG 5.4% (328 ft/nm) due to obstacles. 2. During activity of NLFS cross GAGSI at or above 6500ft (PDG 3.4% (210 ft/nm)) 3. If unable to comply advise ATC prior start-up.
STR 1Z	STRASBOURG ONE ZULU Climb on course 212° to LUPEN; to STR.			<ol style="list-style-type: none"> 1. During glider activities at Neuhof climb with PDG 4.8% (292 ft/nm) or more until passing 5000. 2. If unable to comply advise ATC prior start-up.
TUBLO 1Z	TUBLO ONE ZULU Climb on course 210° to SB040; LT, direct to SB043; to TUBLO. Climb with 3.9% (237ft/nm) or more until passing 4700.			<ol style="list-style-type: none"> 1. PDG 3.9% (237 ft/nm) due to obstacles. 2. During activity of NLFS cross TUBLO at or above 6500ft (PDG 3.7% (225 ft/nm)).

* Departure frequency may deviate from the frequency published. Check ATIS for current departure frequency.

After Take-Off contact Langen Radar!

VATSIM Germany
Standard Instrument Departure Chart
Karlsruhe/Baden-Baden
EDSB
SID
03/21

Designator	Route	After Take-Off		Remarks
		Climb to	Contact	

RWY 03

GAGASI 5N	GAGSI FIVE NOVEMBER Climb on course 030° KBA to 7.0 DME KBD; RT, on heading 153° to intercept R333 SUL; on R333 SUL via PABLA to GAGSI. Climb with 5.7% (346 ft/nm) or more until passing 5400. MAX. IAS 230kt until established inbound PABLA.	FL 070	Langen Radar 125.050*	<ol style="list-style-type: none"> 1. PDG 5.7% (346 ft/NM) due to navaid coverage (SUL). 2. During activation of glider sector Rastatt cross 7.0 DME KBD at or above 4000ft (PDG 7.6% (462 ft/nm)). 3. During activity of NLFS cross PABLA at or above 6500ft (PDG 6.0% (364 ft/nm)). 4. If unable to comply advise ATC prior start-up.
TUBLO 9N	TUBLO NINE NOVEMBER Climb on course 030° KBA to 7.0 DME KBD; RT, on heading 153° to intercept R333 SUL; on R333 SUL via PABLA to GAGSI; RT, on R190 KRH to TUBLO. Climb with 5.7% (346 ft/nm) or more until passing 5400. MAX. IAS 230kt until established inbound PABLA.			<ol style="list-style-type: none"> 1. PDG 5.7% (346 ft/NM) due to navaid coverage (SUL). 2. During activation of glider sector Rastatt cross 7.0 DME KBD at or above 4000ft (PDG 7.6% (462 ft/nm)). 3. During activity of NLFS cross PABLA at or above 6500ft (PDG 6.0% (364 ft/nm)). 4. If unable to comply advise ATC prior start-up.

RWY 21

GAGSI 5P	GAGSI FIVE PAPA Climb on course 210° KBA to 8.0 DME KBD; LT, on course 085° SE to intercept R261 STG; on R261 STG to GAGSI. Climb with 5.4% (328 ft/nm) or more until passing 5100. Climb with 5.8% (355 ft/nm) or more until passing FL70. MAX. IAS 240kt until established on course 085° SE.	FL 070	Langen Radar 125.050*	<ol style="list-style-type: none"> 1. PDG 5.4% (328 ft/nm) due to obstacles. 2. PDG 5.8% (355 ft/nm) due to navaid coverage (STG). 3. During activity of NLFS cross GAGSI at or above 6500ft (PDG 3.4% (210 ft/nm)). 4. If unable to comply advise ATC prior start-up.
STR 6P	STRASBOURG SIX PAPA Climb on course 212° KBA until crossing R102 STR; RT, on R121 STR to STR.			<ol style="list-style-type: none"> 1. During glider activities at Neuhof climb with PDG 4.8% (292 ft/nm) or more until passing 5000. 2. If unable to comply advise ATC prior start-up.

* Departure frequency may deviate from the frequency published. Check ATIS for current departure frequency.

After Take-Off contact Langen Radar!