

# vACC-Germany Instrument Approach Chart

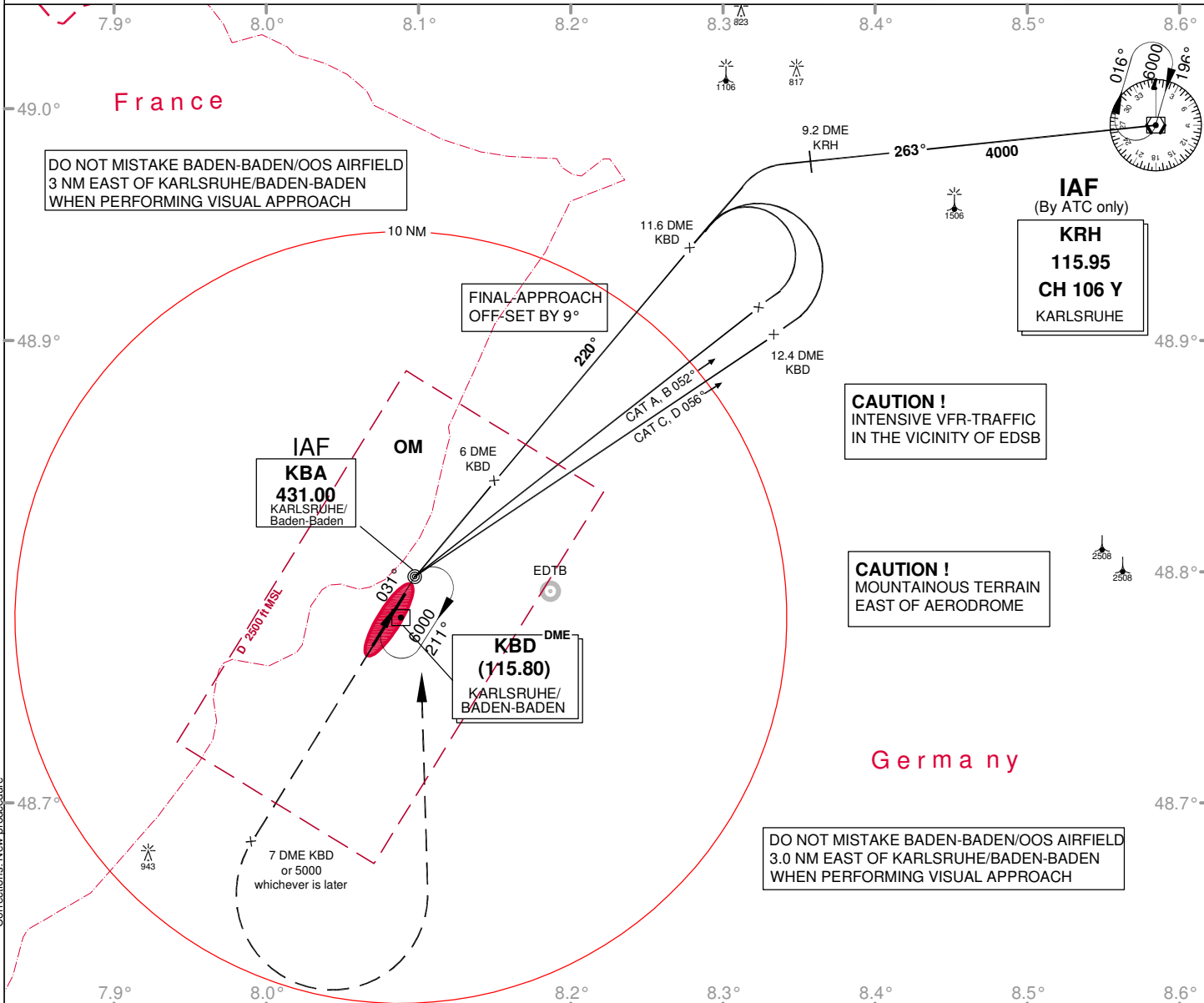
# Karlsruhe/Baden-Baden EDSB

THR21 ELEV: 404  
ELEV: 408  
VAR: 1°E

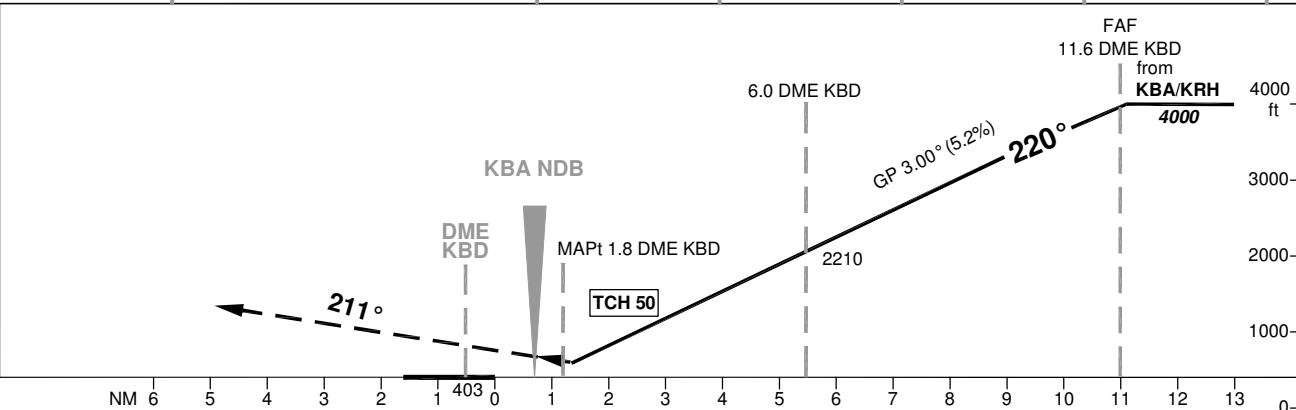
ATIS: 121.275  
Arrival: 125.050

Tower: 125.870  
Ground: 121.820

**NDB**  
**RWY 21**



OCA (OCH)	NDB DME
A	970 (570)
B	970 (570)
C	970 (570)
D	970 (570)



**MISSED APPROACH:** Climb on Track 211° to 7.0 DME KBD or 5000 whichever is later; LT to KBA NDB climbing to 6000

DME KBD	3	4	5	6	7	8	9	10	11
DIST THR	2.5	3.5	4.5	5.5	6.5	7.5	8.5	9.5	10.5
ALTITUDE	1250	1570	1890	2210	2530	2850	3170	3480	3800

