

vACC-Germany Instrument Approach Chart

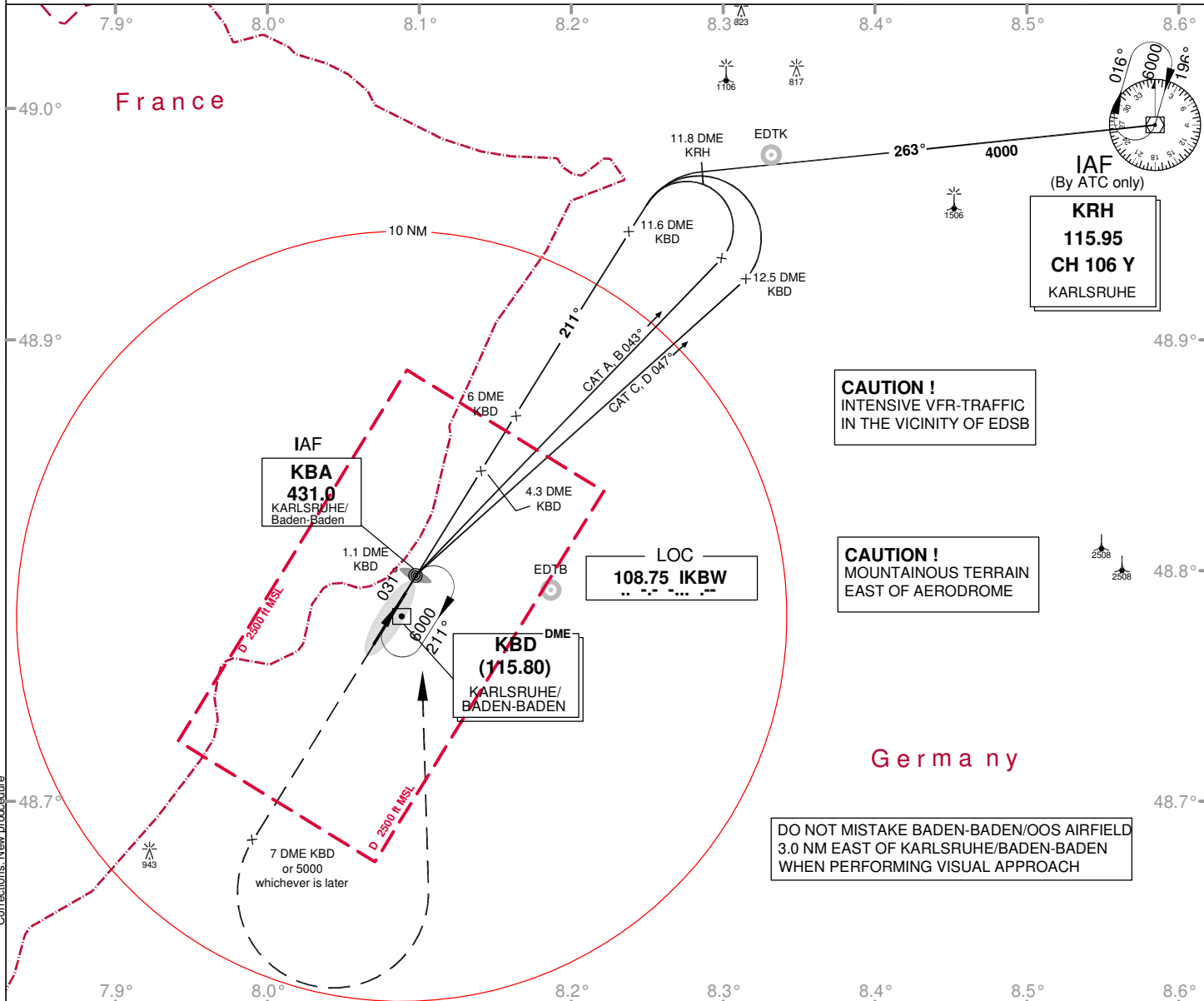
Karlsruhe/Baden-Baden EDSB

THR21 ELEV: 403
ELEV: 408
VAR: 1°E

ATIS: 121.270
Arrival: 125.050

Tower: 125.870
Ground: 121.820

LOC
RWY 21

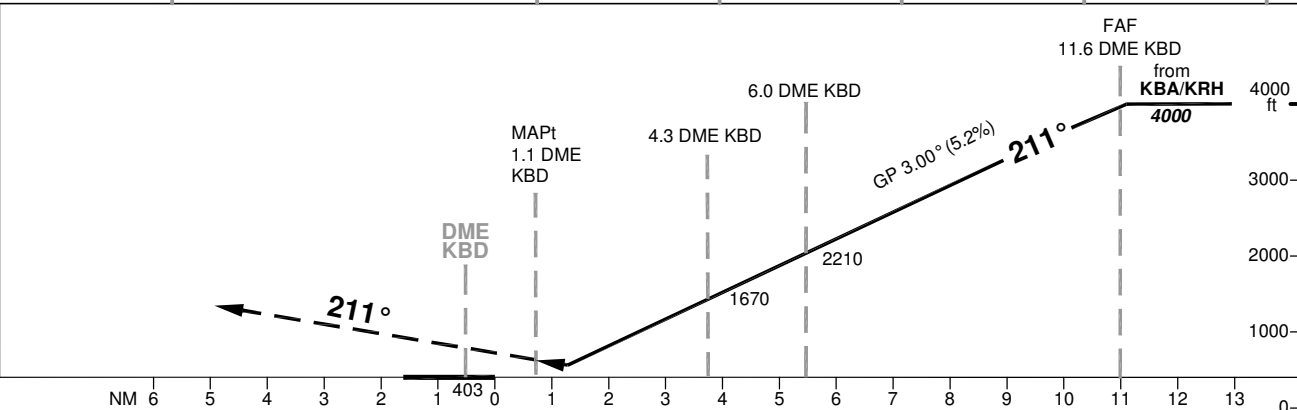


CAUTION !
INTENSIVE VFR-TRAFFIC
IN THE VICINITY OF EDSB

CAUTION !
MOUNTAINOUS TERRAIN
EAST OF AERODROME

DO NOT MISTAKE BADEN-BADEN/OOS AIRFIELD
3.0 NM EAST OF KARLSRUHE/BADEN-BADEN
WHEN PERFORMING VISUAL APPROACH

OCA (OCH)	LOC DME
A	880 (480)
B	880 (480)
C	880 (480)
D	880 (480)



MISSED APPROACH: Climb on track 211° to 7.0 DME KBD or 5000 whichever is later; LT to KBA NDB climbing to 6000

DME KBD	2	3	4	5	6	7	8	9	10
DIST THR	1.5	2.5	3.5	4.5	5.5	6.5	7.5	8.5	9.5
ALTITUDE	940	1250	1570	1890	2210	2530	2850	3170	3480

