

VACC-SAG Instrument Approach Chart

Karlsruhe/Baden-Baden EDSB

Elevation: 408

ATIS: 121.275

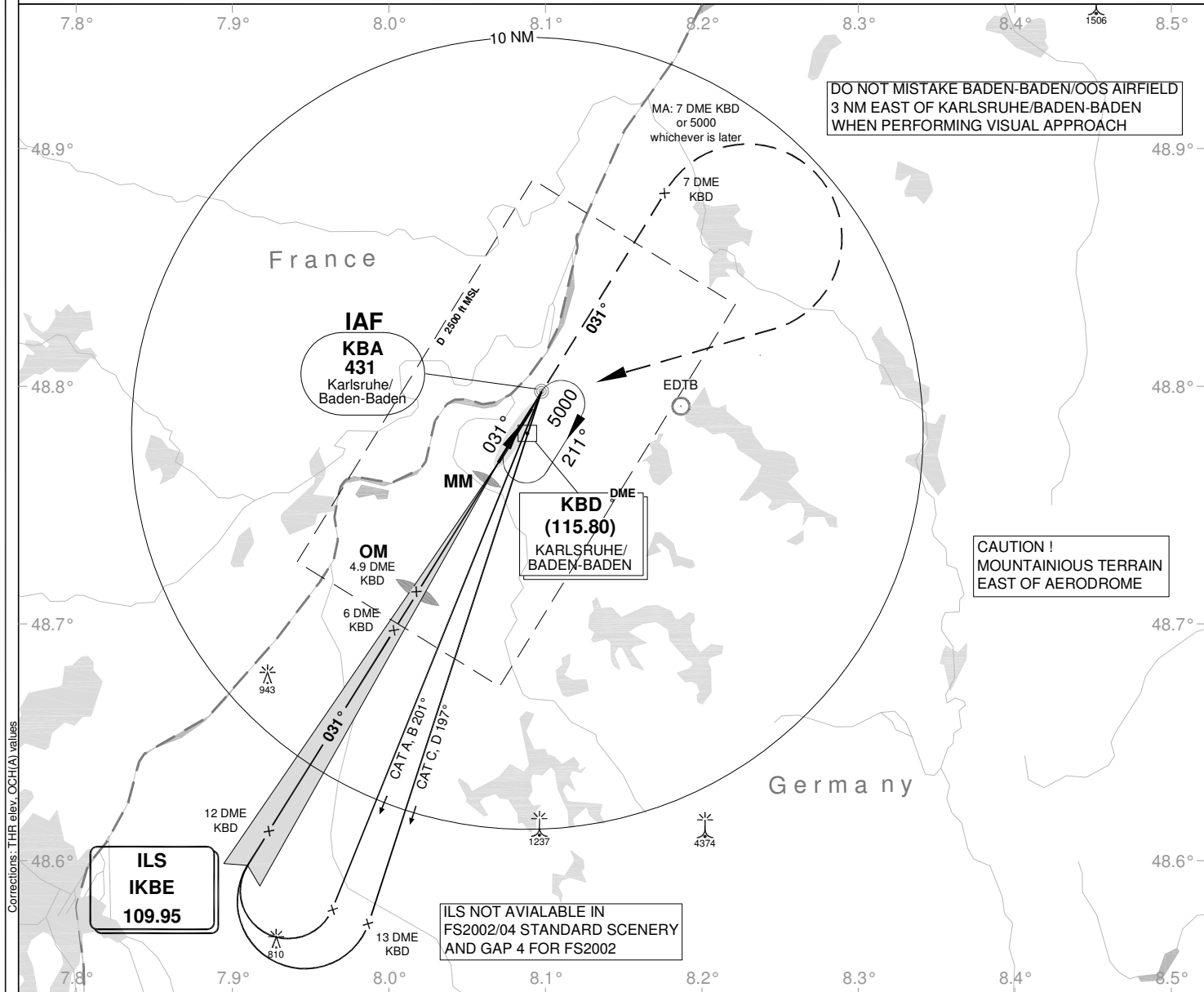
Tower: 125.870

VAR: 1°E

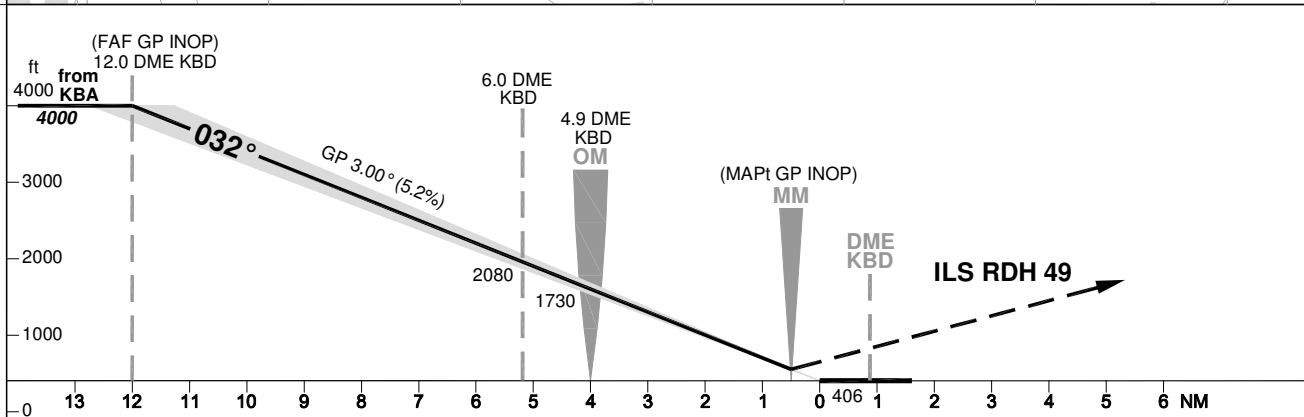
Arrival: 125.050

Ground: 121.820

ILS RWY 03



Corrections: THR elev, OCH(A) values



OCA (OCH)	ILS CAT I
CAT A	550 (145)
CAT B	560 (155)
CAT C	570 (165)
CAT D	580 (175)
CAT E	
Large Aircraft	580 (175)

MISSED APPROACH: Straight ahead to 7 DME KBD or 5000 whichever is later; RT to KBA NDB climbing to 6000

DME KBD	11	10	9	8	7	6	5	4	3
DME THR	10.1	9.1	8.1	7.1	6.1	5.1	4.1	3.1	2.1
ALTITUDE	3680	3360	3040	2720	2400	2080	1770	1450	1130

