

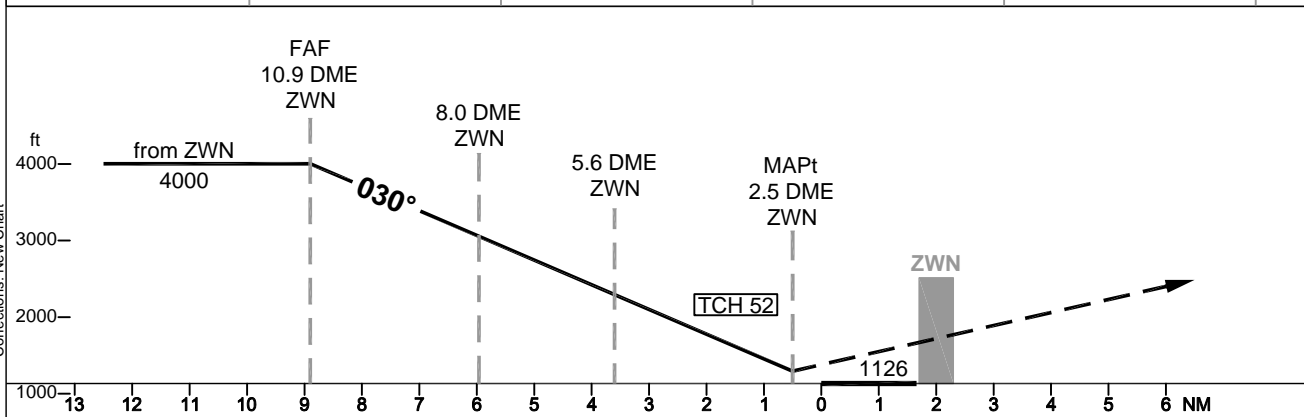
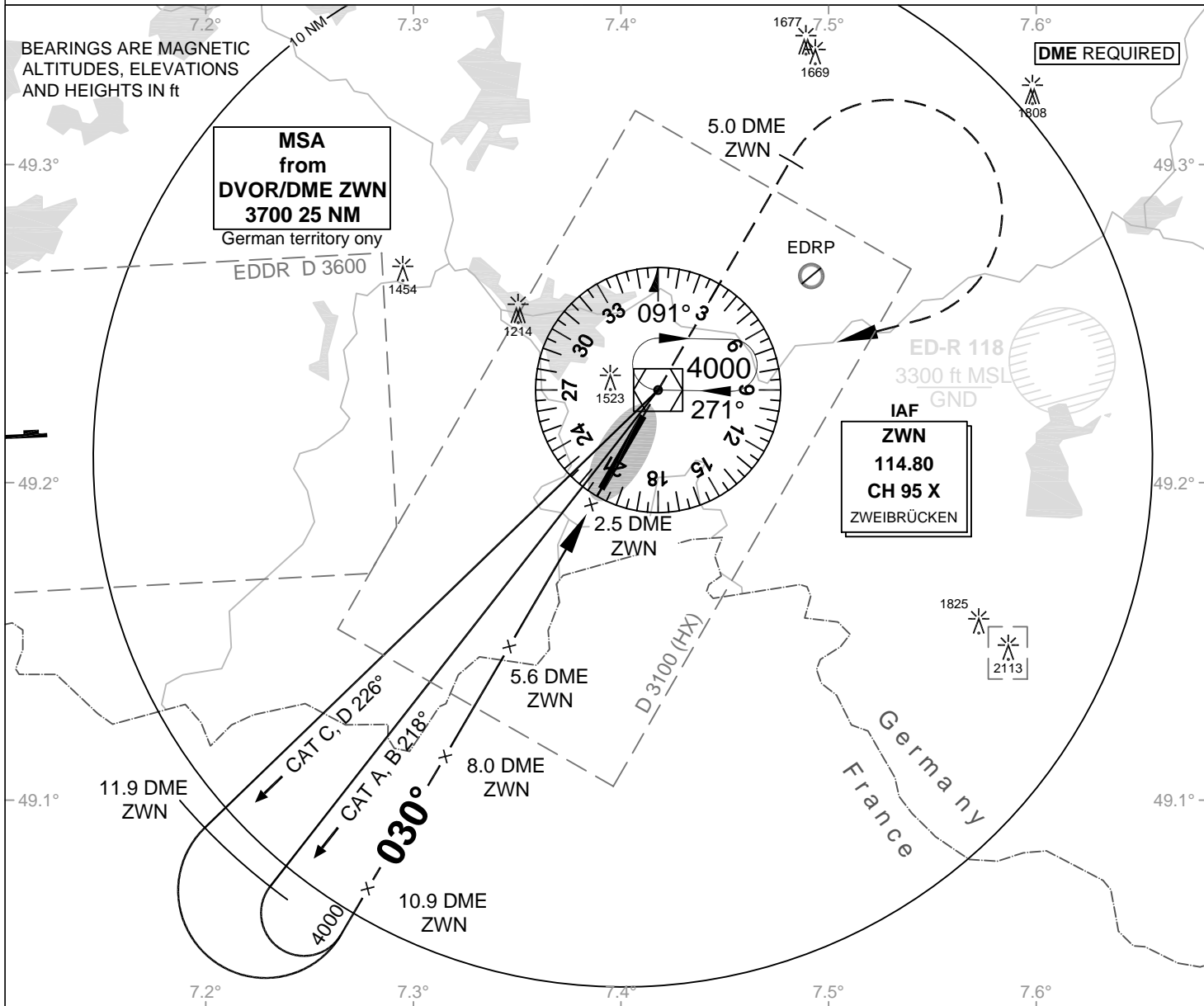
VACC-SAG Instrument Approach Chart

**Zweibrücken
EDRZ
VOR
RWY 03**

Elevation: 1133 ft

VAR: 0°

Tower: 123.820
Langen Radar: 127.500



OCA (OCH)	VOR DME
CAT A	1590 (470)
CAT B	1590 (470)
CAT C	1590 (470)
CAT D	1590 (470)
CAT E	
Large Aircraft	

MISSED APPROACH: Straight ahead to 5.0 DME ZWN, RT to ZWN DVOR/DME climbing to 4000

DME VOR ZWN	10	9	8	7	6	5	4		
DME THR	8	7	6	5	4	3	2		
ALTITUDE	3730	3410	3090	2770	2460	2140	1820		

GS	kt	80	100	120	140	160	180
5.6 DME ZWN-MAPt (3.1 NM)	MIN:SEC	2:20	1:52	1:33	1:20	1:10	1:02
Rate of descent (5.2%)	ft / MIN	420	530	640	740	850	960

Timing not authorized for defining the MAPt.