

VATSIM Germany Standard Instrument Arrival Chart



**NIEDERRHEIN
EDLV
STAR
RWY 09/27**

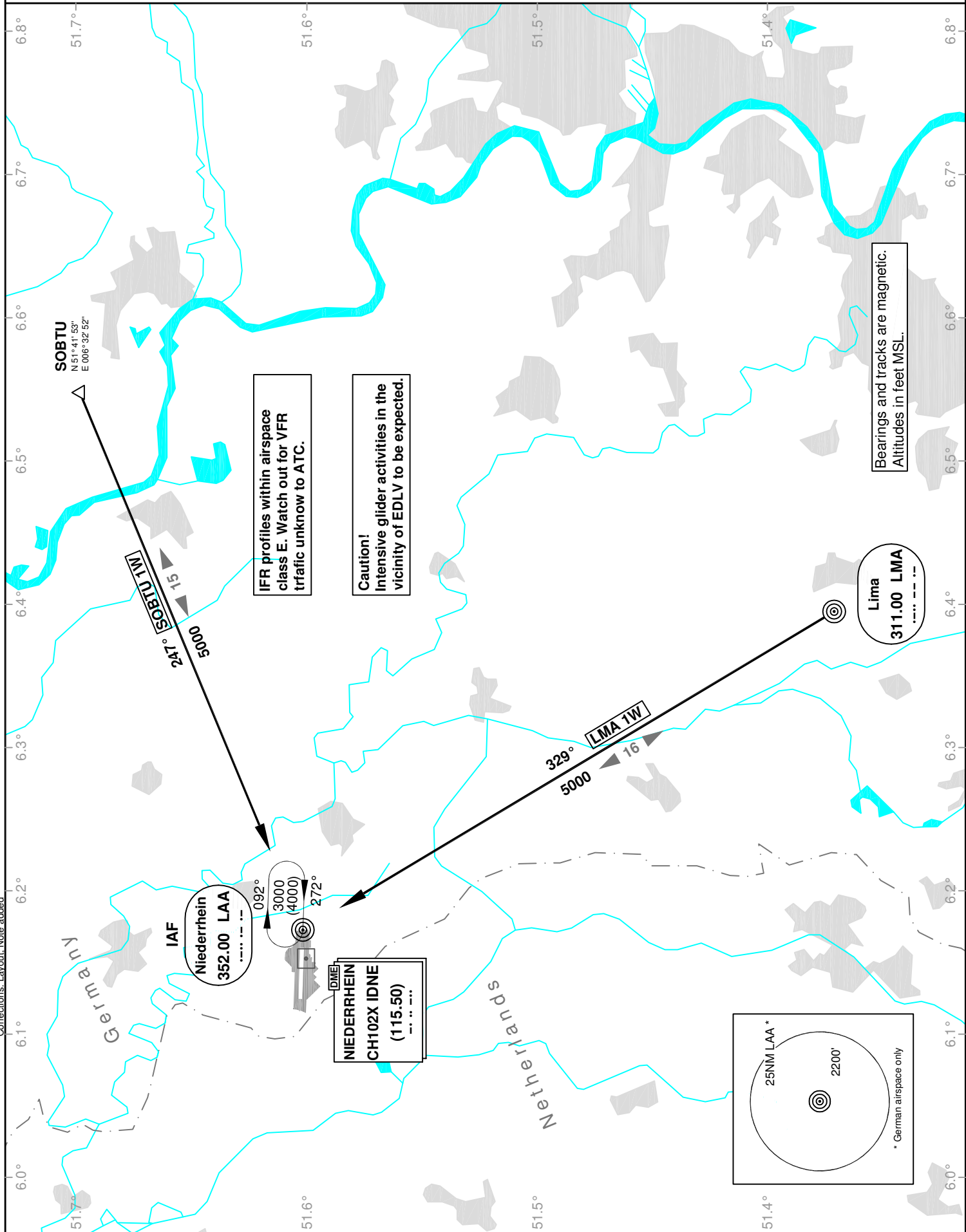
Transition Altitude: 5000 ft.

ATIS 124.450

Langen Radar 128.500

Tower 129.400

VAR: 0°



IFR profiles within airspace class E. Watch out for VFR traffic unknown to ATC.

Caution! Intensive glider activities in the vicinity of EDLV to be expected.

Bearings and tracks are magnetic. Altitudes in feet MSL.

Lima
311.00 LMA

**NIEDERRHEIN
CH102X IDNE
(115.50)**

**Niederrhein
352.00 LAA**

25NM LAA*
2200'
* German airspace only

Corrections: Layout. Note added