

VATSIM Germany Standard Instrument Departure Chart



NIEDERRHEIN EDLV

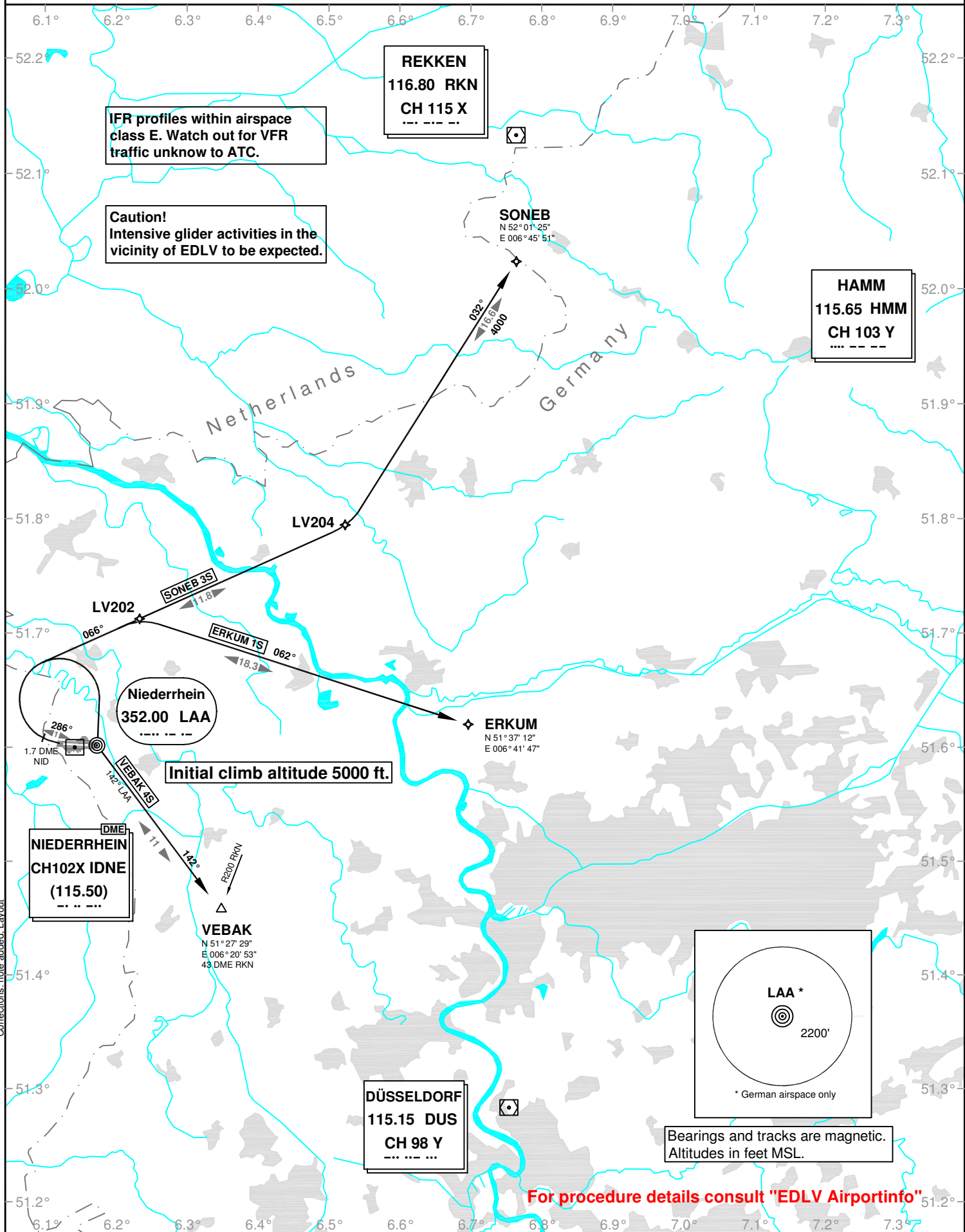
Transition Altitude: 5000 ft.

ATIS 124.450

Tower 129.400
Langen Radar 128.500

SID RWY 27

VAR: 0°



For procedure details consult "EDLV Airportinfo"

Corrections: note added, Layout