

VATSIM Germany Standard Instrument Departure Chart



NIEDERRHEIN EDLV

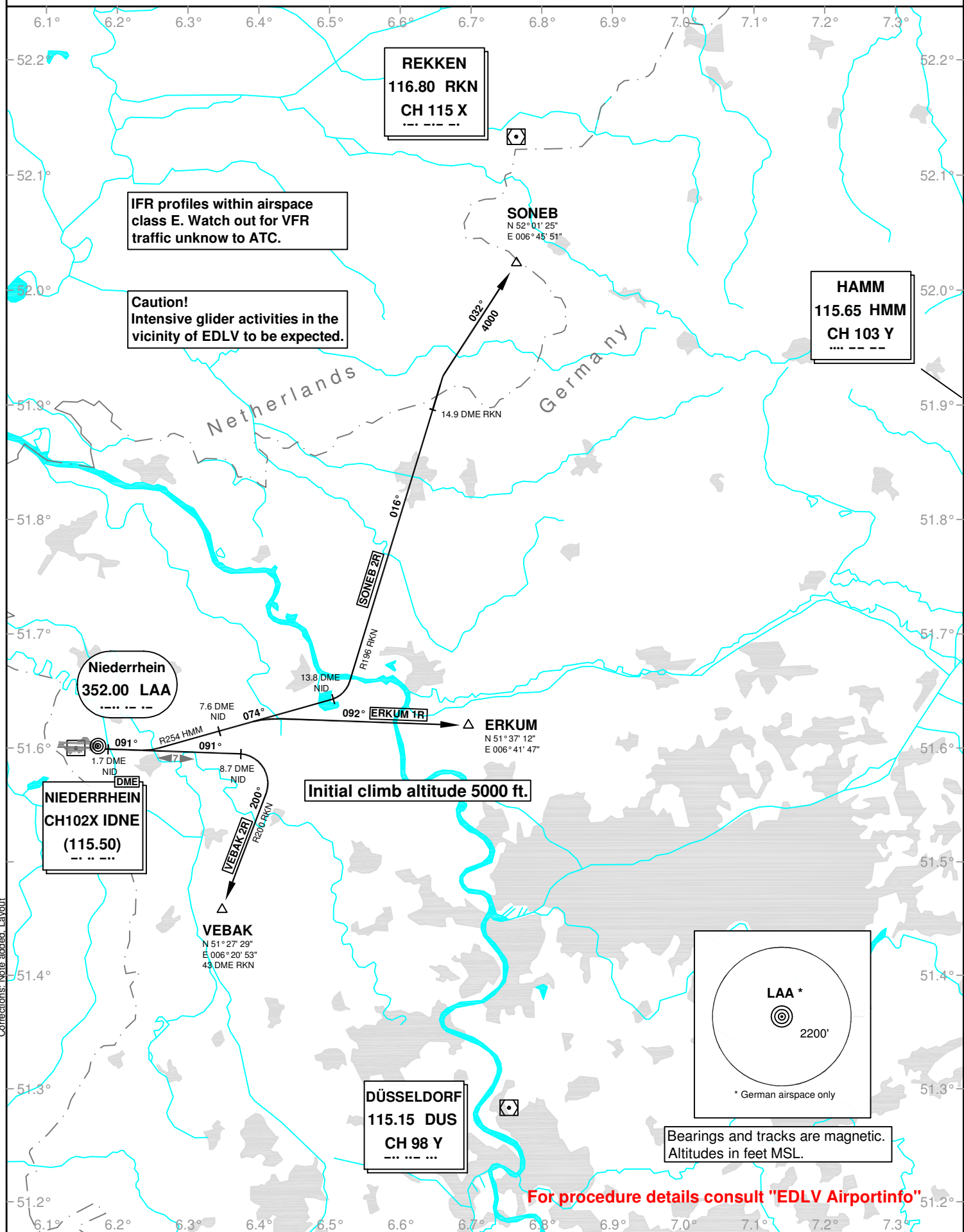
Transition Altitude: 5000 ft.

ATIS 124.450

Tower 129.400
Langen Radar 128.500

SID RWY 09

VAR: 0°



Corrections: Note added. Layout

For procedure details consult "EDLV Airportinfo"