

Düsseldorf RG Airports

Note: Not for real navigation!

Paderborn/Lippstadt (EDLP / PAD)

Effective: **02 JUN 2011**

Elevation 699 ft

(Changes are marked yellow)

NAVAIDS:

PAD 108.50
PAD 354.0
ILS 06 111.70 / 057° (IPLP)
ILS 24 108.55 / 237° (IPLW)

Communication:

Station	Freq.
ATIS	125.72
Ground	121.92
Tower	133.37
Langen Radar	135.65, 133.35

RNAV (GPS) Approaches

RWY 06

PAD PAD - LP025 - LP026 - LP027 - KOMIL RNAV (GPS) Approach, (cross KOMIL at 3000 ft)

RWY 24

PAD PAD - LP020 - LP021 - LP022 - IBEGO RNAV (GPS) Approach, (cross IBEGO at 3000 ft)

WRB WRB - LP021 - LP022 - IBEGO RNAV (GPS) Approach, (cross IBEGO at 3000 ft)

Standard Instrument Arrival Routes

(Transition Altitude 5000ft)

RWY 06/24

WRB 5H	(WARBURG FIVE HOTEL)	WRB (Δ) - 13.5 DME PAD /Track 291° - PAD (Δ)	RWY24 in use: WRB DVOR/DME IAF
PELUN 2H	(PELUN TWO HOTEL)	PELUN (Δ) - 10.1 DME PAD /Track 008° - PAD (Δ)	
EXOBA 2H	(EXOBA TWO HOTEL)	EXOBA (Δ) - 6.9 DME PAD /Track 125° - PAD (Δ)	
PADBA 3H	(PADBA THREE HOTEL)	PADBA (Δ) - TULDO (Δ) - PAD (Δ)	BRNAV equipment necessary

Standard Instrument Departure Routes

RWY 06

(After takeoff climb to 5000 ft., contact Langen Radar.)

WRB 8X	(WARBURG EIGHT X-RAY)	On track 056° to 2.7 DME PAD - RT on track 077° to 5.6 DME PAD - RT on R304 WRB to WRB (Δ) Cross 2.7 DME PAD at 1700 or above Cross 5.6 DME PAD at 3500 or above GPS/FMS: [A1100+] - LP100[A1700+;R] - LP104[A3500+;R] - WRB	PDG 8.3% / 505ft NM to 5.5 DME PAD due to airspace structure. If unable to comply, advise ATC
GMH 9X	(GERMINGHAUSEN NINE X-RAY)	On track 056° to 4.1 DME PAD - LT to PAD - on track 239° PAD to MABAB (Δ) - LT on R023 GMH to GMH (Δ) Cross 4.1 DME PAD at 2400 or above GPS/FMS: [A1100+] - LP101[A2400+;L] - LP103 - PAD[R] - MABAB[L] - GMH	1. PDG 8.3% / 505ft NM to 4.1 DME PAD due to airspace structure. If unable to comply, advise ATC 2. Only for DEST EDDK and aircraft with Y flightplans. 2. For flights intending to proceed via Z841.
HMM 7X	(HAMM SEVEN X-RAY)	On track 056° to 4.1 DME PAD - LT on R102 HMM to HMM (Δ) Cross 4.1 DME PAD at 2400 or above GPS/FMS: [A1100+] - LP101[A2400+;L] - LP102 - HMM	PDG 8.3% / 505ft NM to 4.1 DME PAD due to airspace structure. If unable to comply, advise ATC
DOMEG 2X	(DOMEG TWO X-RAY)	On track 056° to 4.1 DME PAD - LT on R102 HMM to 24.8 DME HMM - LT on track 262° to DOMEG (Δ). Cross 4.1 DME PAD at 2400 or above GPS/FMS: [A1100+] - LP101[A2400+;L] - LP102 - LP105[L] - DOMEG	1. PDG 8.3% / 505ft NM to 4.1 DME PAD due to airspace structure. If unable to comply, advise ATC. 2. After 24.8 DME HMM BRNAV equipment necessary.

RWY 24

(After takeoff climb to 5000 ft., contact Langen Radar.)

WRB 7W

(WARBURG SEVEN WHISKEY)

On track 236° to 4.9 DME PAD - LT on R269 WRB to WRB (Δ)
GPS/FMS: [A1100+] - LP201[L] - LP202 - WRB

GMH 8W

(GERMINGHAUS EN EIGHT WHISKEY)

On track 239° PAD to MABAB (Δ) - LT on R023 GMH to GMH (Δ)
GPS/FMS: [A1100+] - MABAB[L] - GMH

1. Only for DEST EDDK and aircraft with Y flightplans.
2. For flights intending to proceed via Z841.

HMM 5W

(HAMM FIVE WHISKEY)

On track 236° to 2.4 DME PAD - RT on R117 HMM to HMM (Δ)
GPS/FMS: [A1100+] - LP200[R] - HMM

DOMEG 2W

(DOMEG TWO WHISKEY)

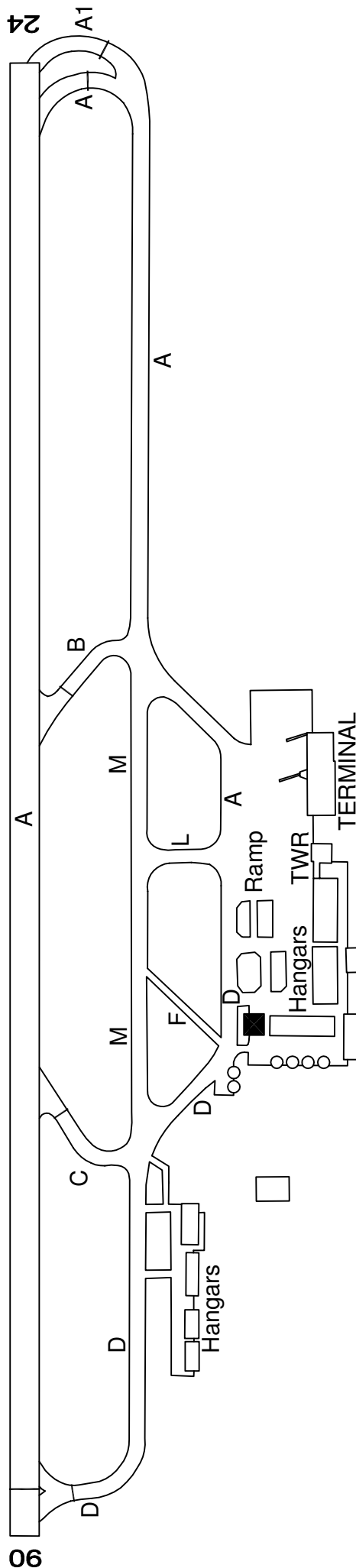
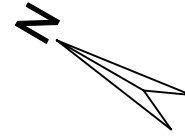
On track 236° to 2.4 DME PAD - RT on R117 HMM to 19.9 DME HMM
 - LT on track 269° to DOMEG (Δ)
GPS/FMS: [A1100+] - LP200[R] - LP203[L] - DOMEG

After 19.9 DME HMM
 BRNAV equipment
 necessary

VFR Entry / Exit Points

NOVEMBER	north of airport	175° OSN /35 DME / 097° DOM (36 DME)	(N 51° 39,2' E008° 32,4')
SIERRA	south of airport	289° WRB (15 DME)	(N 51° 35,2' E008° 43,3')

Paderborn / Lippstadt Germany (EDLP)



Rwy dim (mtrs.):
2180 x 45

Elevations:
THR Rwy 06 - 699 ft
THR Rwy 24 - 674 ft

**For flight simulator use only.
Not to be used for real world flight.**

VATSIM Germany Standard Instrument Arrival Chart

PADERBORN/LIPPSTADT EDLP

Transition Altitude: 5000 ft.

ATIS 125.72

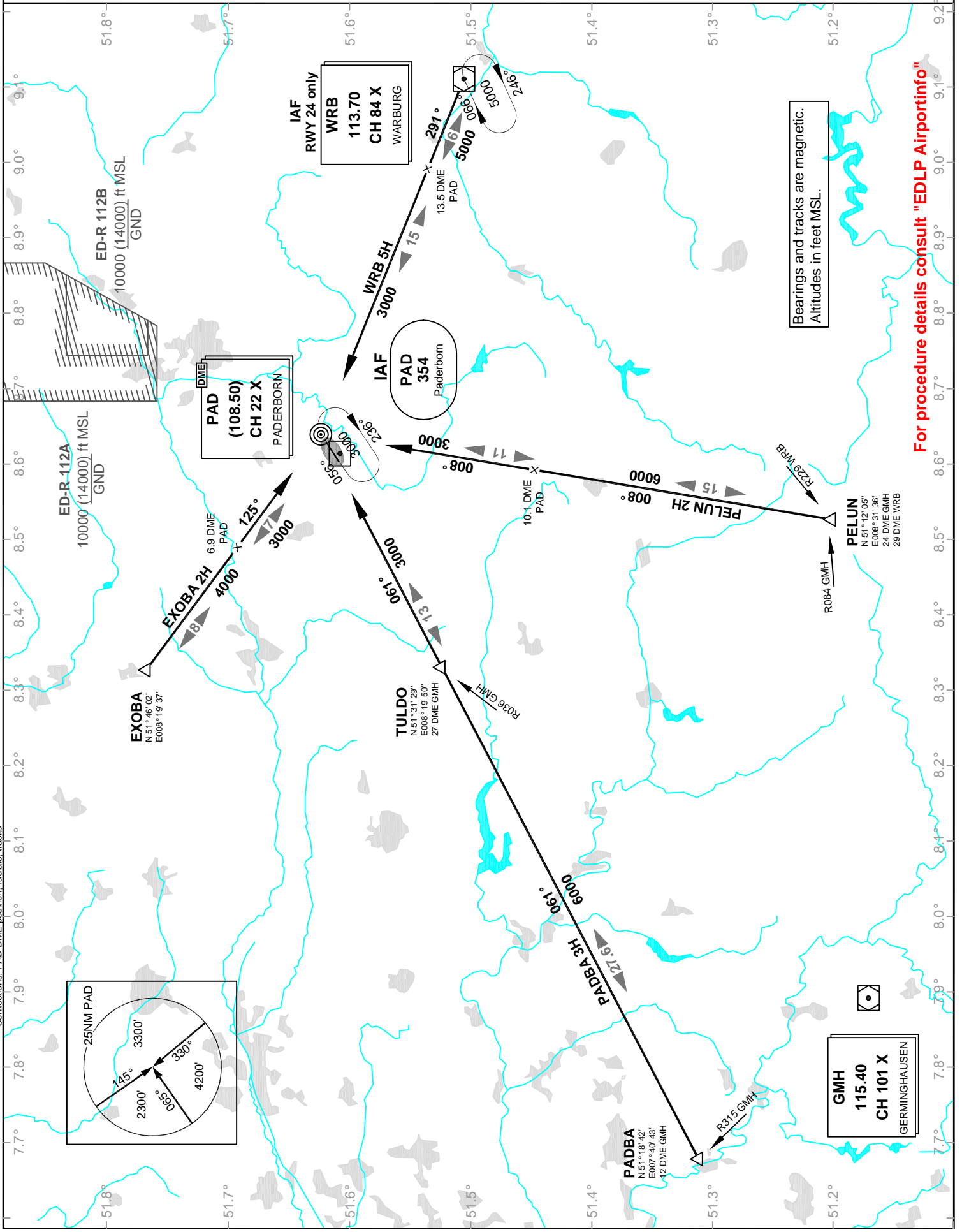
Langen Radar 125.22

Tower 133.37

Ground 121.92

STAR RWY 06/24

VAR: 1°E



VATSIM Germany Instrument Approach Chart

PADERBORN / LIPPSTADT EDLP

Elevation: THR06 699 ft

ATIS 125.72

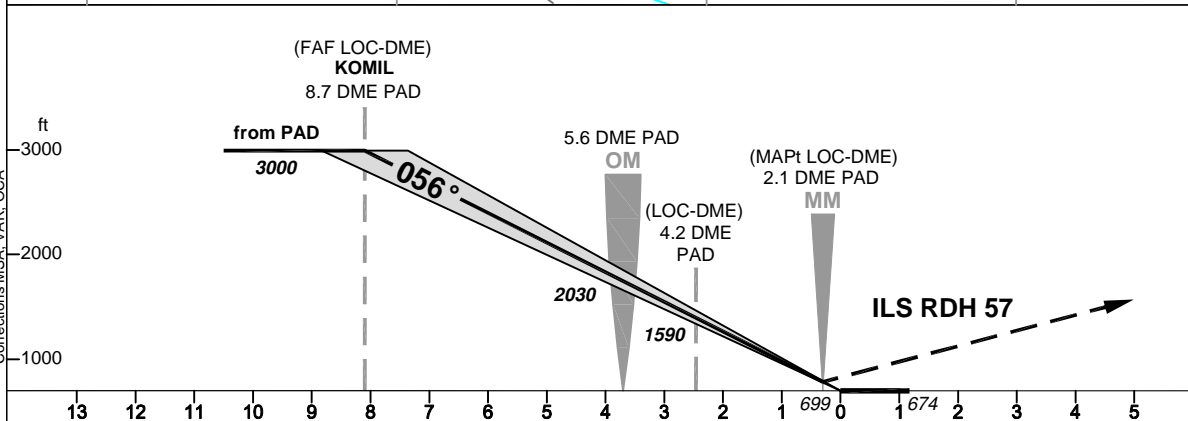
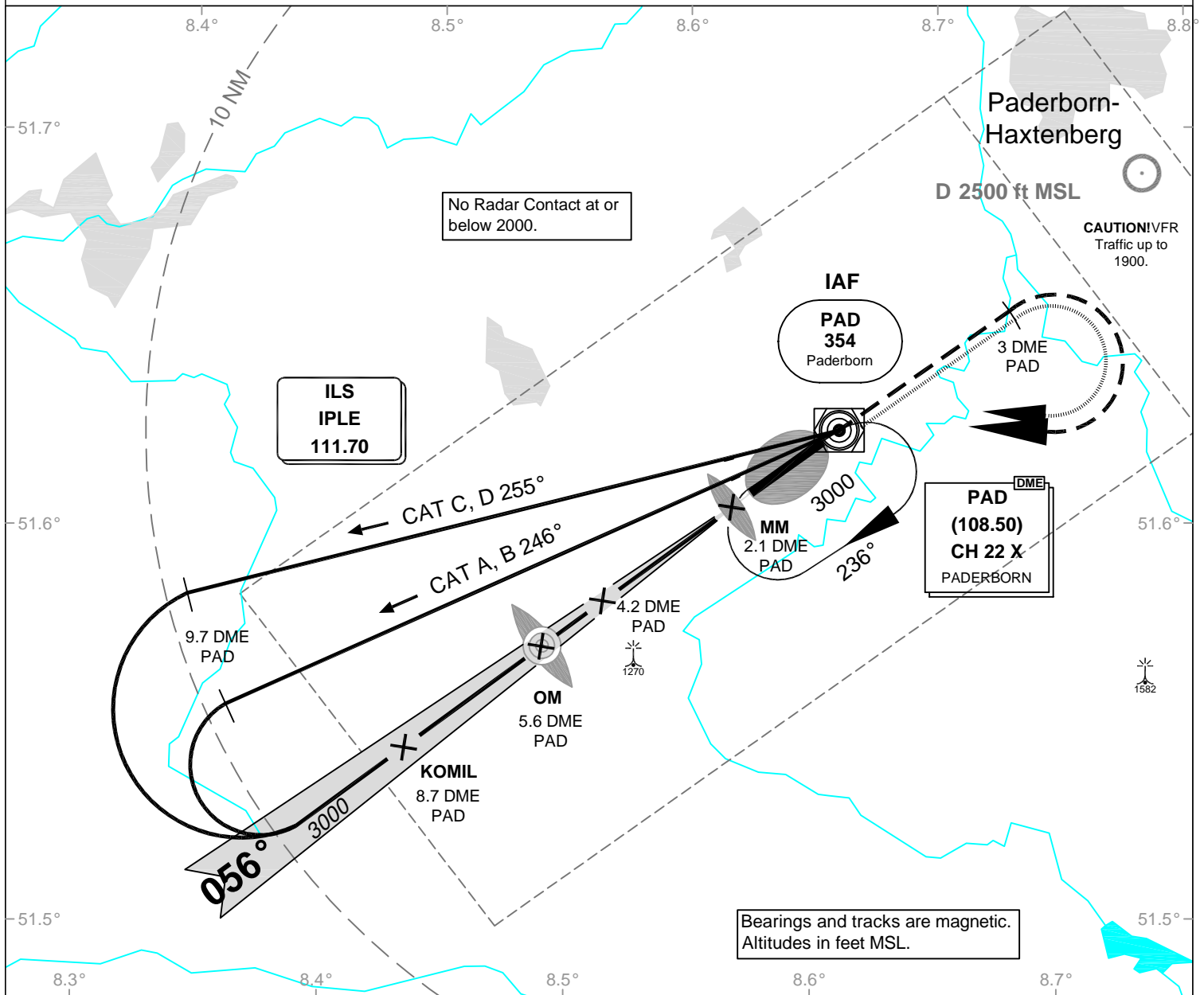
Langen Radar 125.22

Tower 133.37

Ground 121.92

**ILS or LOC
RWY 06**

VAR: 1°E



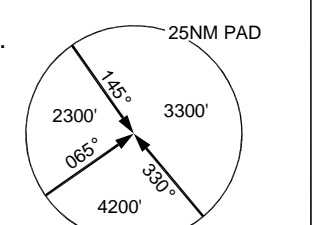
OCA (OCH)	ILS CAT I	LOC DME	CIRCLING
CAT A	848 (149)	1170 (470)	1250
CAT B	858 (159)	1170 (470)	1250
CAT C	868 (169)	1170 (470)	1250
CAT D	878 (179)	1170 (470)	1250
CAT E			
Large Aircraft			

Corrections MSA, VAR, OCA

Circling north of A/D only.

MISSED APPROACH: Climb straight ahead to 3 DME PAD; RT to PAD NDB climbing to 3000 ft.

DME VOR PAD	8	7	6	5	4	3		
DME THR	6.4	5.4	4.4	3.4	2.4	1.4		
ALTITUDE	2800	2480	2160	1840	1530	1210		



VATSIM Germany Instrument Approach Chart

PADERBORN / LIPPSTADT EDLP

Elevation: THR24 674 ft.

ATIS 125.72

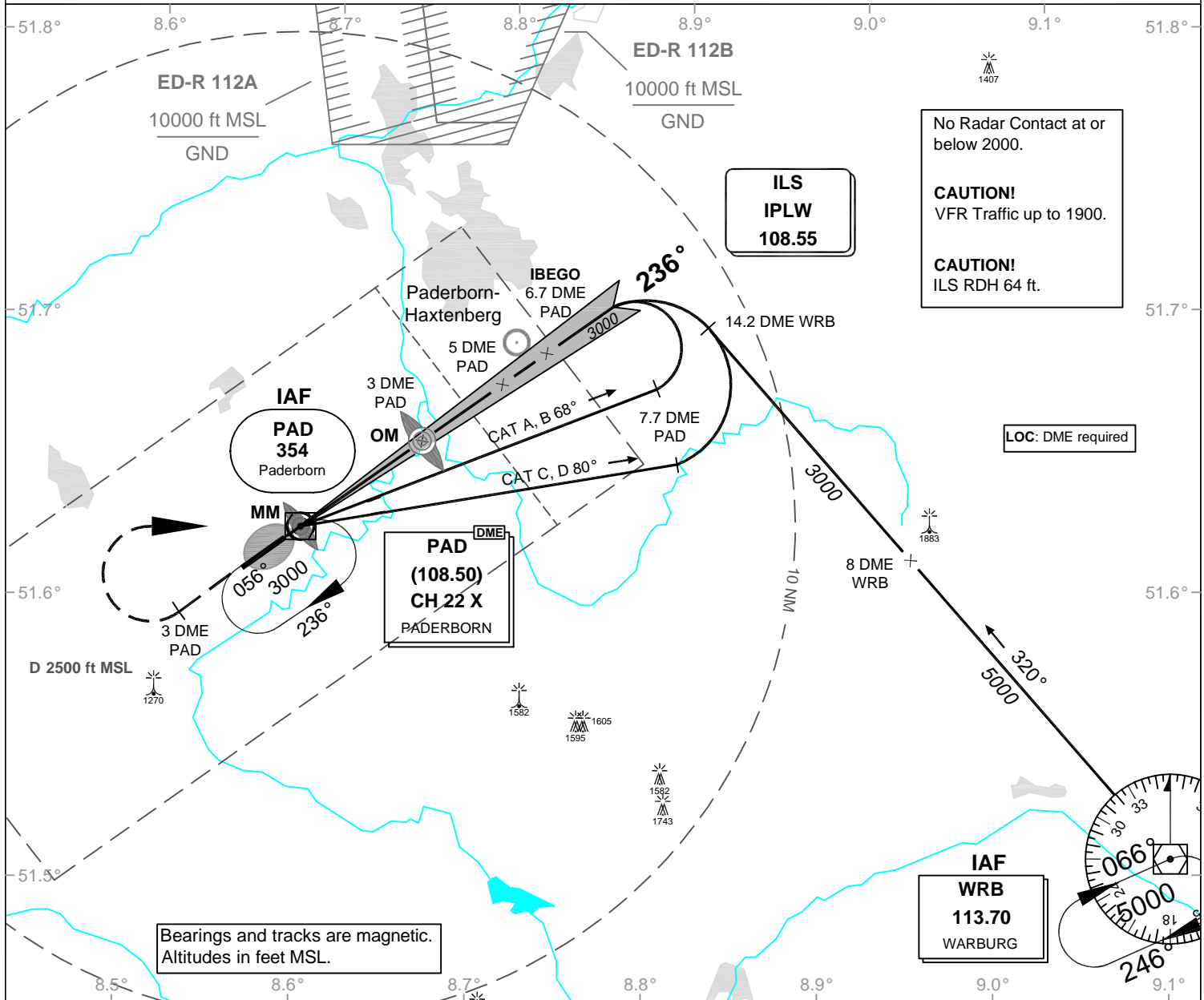
Langen Radar 125.22

Tower 133.37

Ground 121.92

**ILS or LOC
RWY 24**

VAR: 1°E

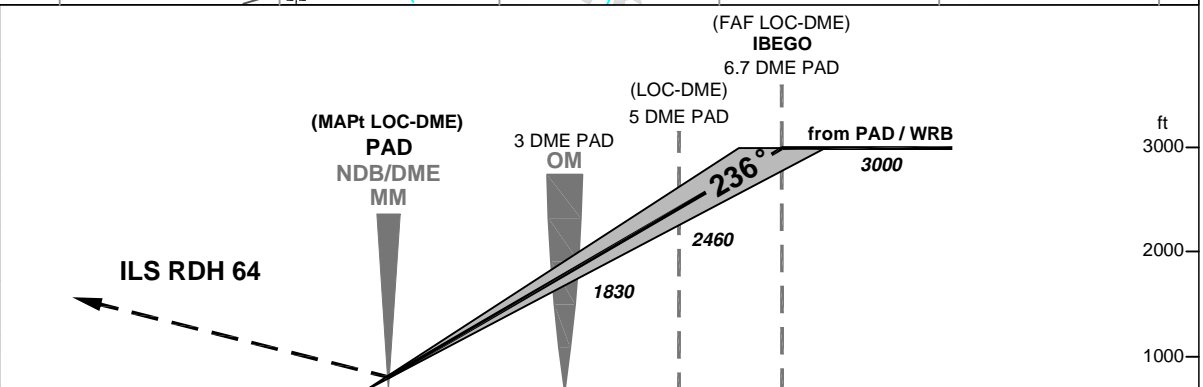


No Radar Contact at or below 2000.
CAUTION!
VFR Traffic up to 1900.
CAUTION!
ILS RDH 64 ft.

LOC: DME required

Bearings and tracks are magnetic.
Altitudes in feet MSL.

OCA (OCH)	ILS CAT I	LOC DME	CIRCLING
CAT A	851 (177)	1110 (440)	1250
CAT B	861 (187)	1110 (440)	1250
CAT C	871 (197)	1110 (440)	1250
CAT D	881 (207)	1110 (440)	1250
CAT E			
Large Aircraft			



Corrections MSA, VAR, OCA
Circling north of A/D only.

NM 6 5 4 3 2 1 0 674 1 2 3 4 5 6 7 8 9 10 11 12 13

MISSED APPROACH: Climb straight ahead to 3 DME PAD, RT to PAD NDB climbing to 3000 ft.

DME VOR PAD	1	2	3	4	5	6		
DME THR	1.4	2.4	3.4	4.4	5.4	6.4		
ALTITUDE	1190	1510	1830	2140	2460	2780		

