

# VATSIM Germany Standard Instrument Departure Chart



# PADERBORN/LIPPSTADT EDLP

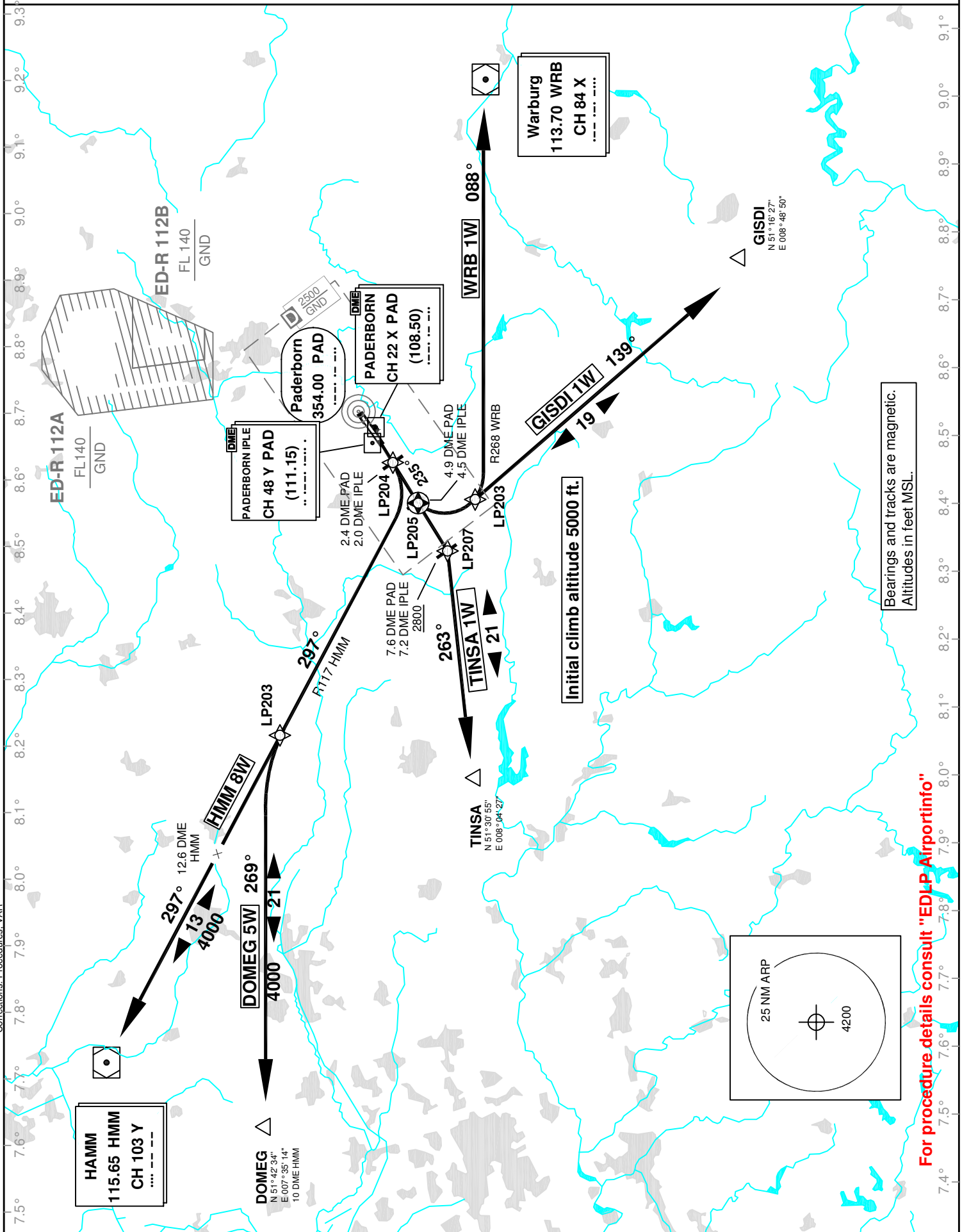
Transition Altitude: 5000 ft.

Langen Radar 135.650  
125.220  
118.750

Tower 133.370  
Ground 121.920  
ATIS 125.720

VAR: 2°E

**SID  
RWY 24**



Corrections: Procedures: VAR