

VATSIM Germany Standard Instrument Departure Chart



PADERBORN/LIPPSTADT EDLP

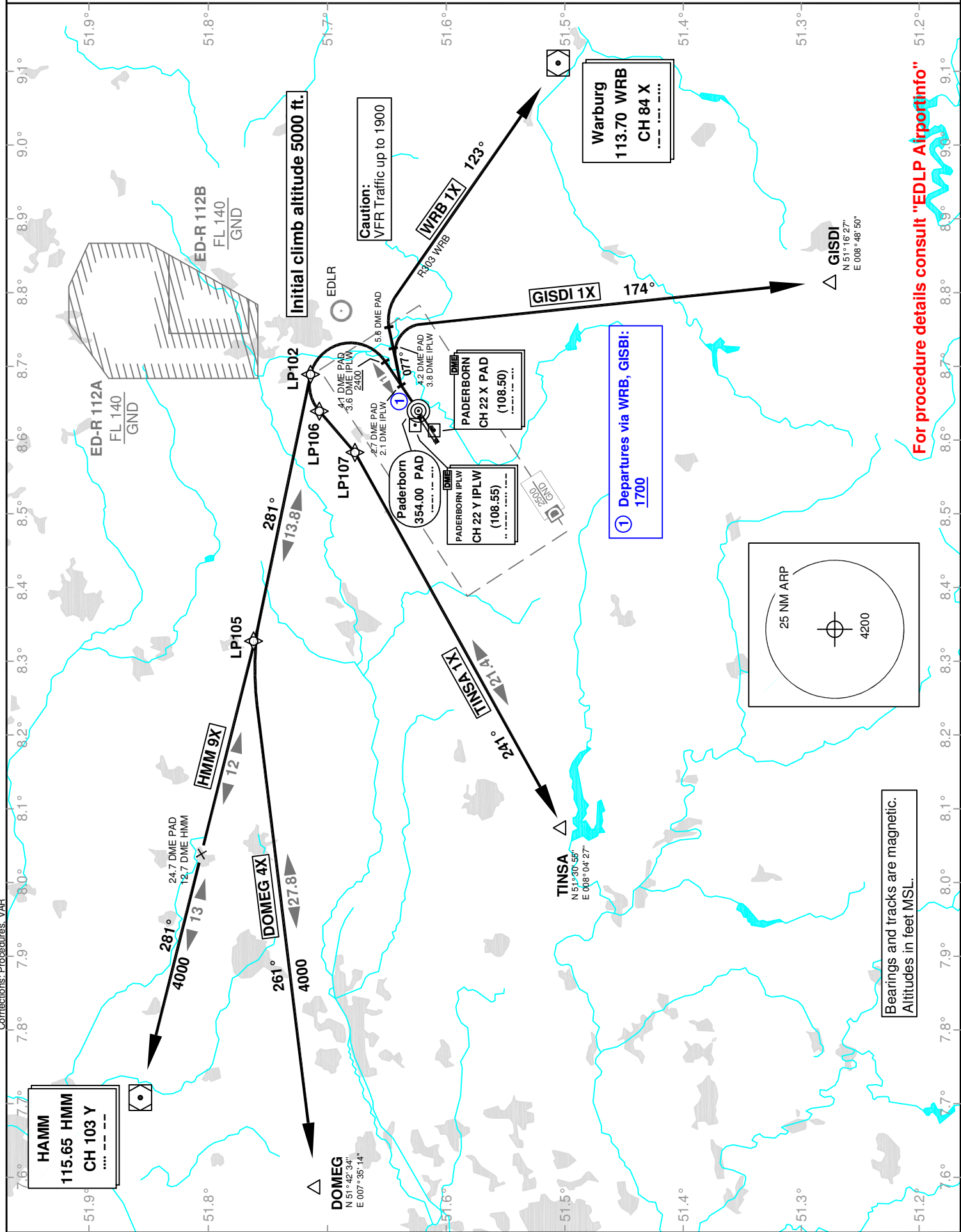
Transition Altitude: 5000 ft.

Langen Radar 135.650
125.220
118.750

Tower 133.370
Ground 121.920
ATIS 125.720

VAR: 2°E

SID RWY 06



For procedure details consult "EDLP Airportinfo"

Bearings and tracks are magnetic.
Altitudes in feet MSL.