

Düsseldorf RG Airports

Note: Not for real navigation!

Siegerland (EDGS / SGE)

Effective: 30 JUL 2009

Elevation 1966 ft

(Changes are marked yellow)

RWY13 1620 x 30 ASPH, 128°, THR 1961 ft
RWY31 1620 x 30 ASPH, 308°, THR 1281 ft
RWY13/31 600 x 30 Grass, 2000kg MTOW
RWY04/22 500 x 30 Grass, 1400 kg MTOW

NAVAIDS:

SLD-DME CH 17 Y (108.05)
ILS 31 108.90 / 308° (ISIW)
SIL-NDB 489.00

Communication:

Station	Freq.
ATIS	128.62
INFO	120.37
RADAR	118.75 (Langen Radar)
	124.97 (Langen Radar)
	135.35 (Langen Radar)

Standard Instrument Arrival Routes

RWY 13/31

NOR 2A	(NÖRVENICH TWO ALPHA)	NOR (Δ) - COL (Δ) - SIL (Δ)	6000ft MNM IFR Cruising Level
SIGEN 4A	(SIGEN FOUR ALPHA)	SIGEN (Δ) - SIL (Δ)	6000ft MNM IFR Cruising Level
TABUM 2A	TABUM TWO ALPHA	TABUM (Δ) - EBOGI (Δ) - BEDSI (Δ) - SIL (Δ)	6000ft MNM IFR Cruising Level

1. Between TABUM and EBOGI BRNAV equipment necessary.
2. Direct entry to ILS31 by ATC only.

Standard Instrument Departure Routes

RWY 13 (After takeoff climb to 6000 ft., contact Langen Radar.)

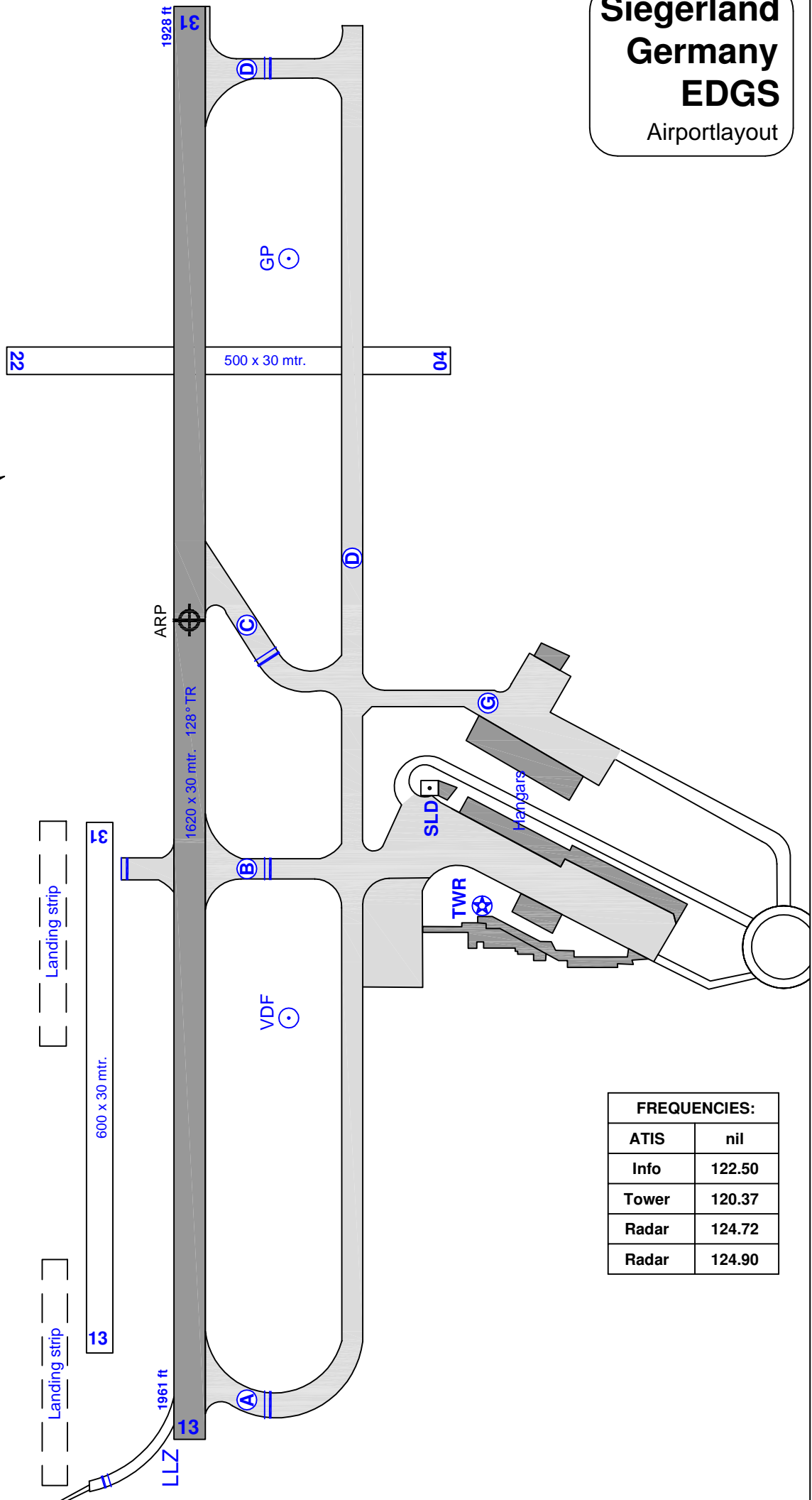
ARP 2S	(ARPE TWO SIERRA)	Climb on RWY hdg dct to SIL, on track 128° SIL to 4 DME SLD or 5000, whichever is later, LT on R188 ARP to ARP (Δ) <u>GPS/FMS: [A2400+] - SIL - GS002[A5000+;L] - GS003 - ARP</u>
NOR 2S	(NÖRVENICH TWO SIERRA)	Climb on RWY hdg dct to SIL, on track 128° SIL to 4 DME SLD or 5000, whichever is later, RT on R116 COL via COL (Δ) to NOR (Δ) <u>GPS/FMS: [A2400+] - SIL - GS002[A5000+;R] - GS005 - COL - NOR</u>
TOBAK 2S	(TOBAK TWO SIERRA)	Climb on RWY hdg dct to SIL, on track 128° SIL to 13.5 DME SLD, LT on R267 FUL to TOBAK (Δ) <u>GPS/FMS: [A2400+] - SIL - GS004[L] - TOBAK</u>

RWY 31 (After takeoff climb to 6000 ft., contact Langen Radar.)

ARP 2N	(ARPE TWO NOVEMBER)	On track 308° SIL to 4 DME SLD or 5000, whichever is later; RT on R221 ARP to ARP (Δ) <u>GPS/FMS: [A2400+] - GS010[A5000+;R] - GS011 - ARP</u>
NOR 2L	(NÖRVENICH TWO LIMA)	On track 308° SIL to 4 DME SLD or 5000, whichever is later; LT on R097 COL via COL (Δ) to NOR (Δ) <u>GPS/FMS: [A2400+] - GS013[A5000+;L] - COL - NOR</u>
TOBAK 1K	(TOBAK ONE KILO)	On track 308° SIL to 4 DME SLD or 5000, whichever is later; RT on R087 COL to 31 DME COL; RT on R136 GMH to TOBAK (Δ) <u>GPS/FMS: [A2400+] - GS010[A5000+;R] - GS012 - GS014 - TOBAK</u>

Remark: Underlined RNAV-Waypoints are fly-over waypoints (Δ)

**Siegerland
Germany
EDGS**
Airportlayout



FREQUENCIES:	
ATIS	nil
Info	122.50
Tower	120.37
Radar	124.72
Radar	124.90

Corrections: New Chart

VATSIM Germany Standard Instrument Arrival Chart

SIEGERLAND EDGS

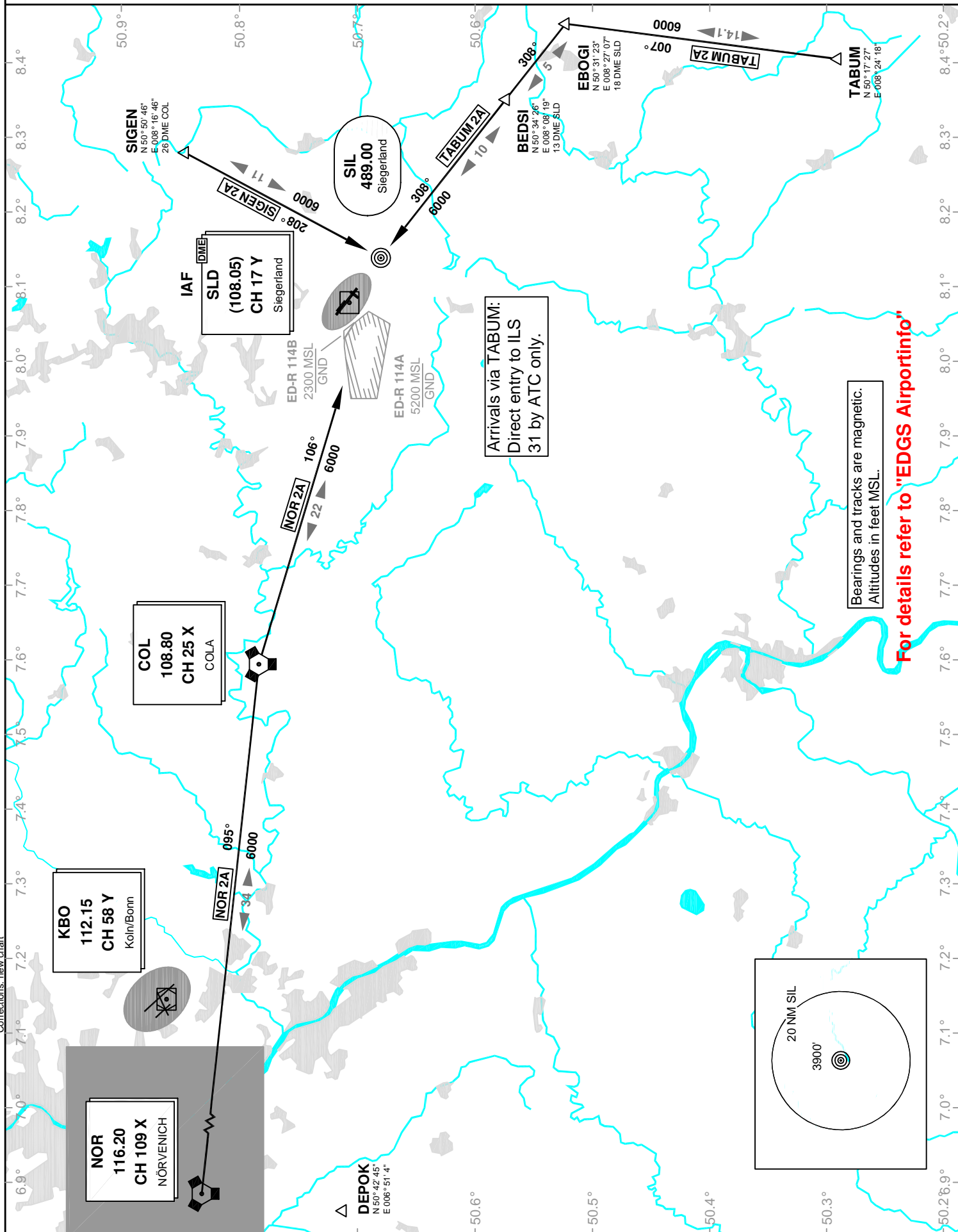
Transition Altitude: 5000 ft.

ATIS nil
Langen Radar 124.90
121.05

Tower 120.37
INFO 122.50

STAR RWY 13/31

VAR: 1°E



Corrections: new chart

VATSIM Germany Instrument Approach Chart

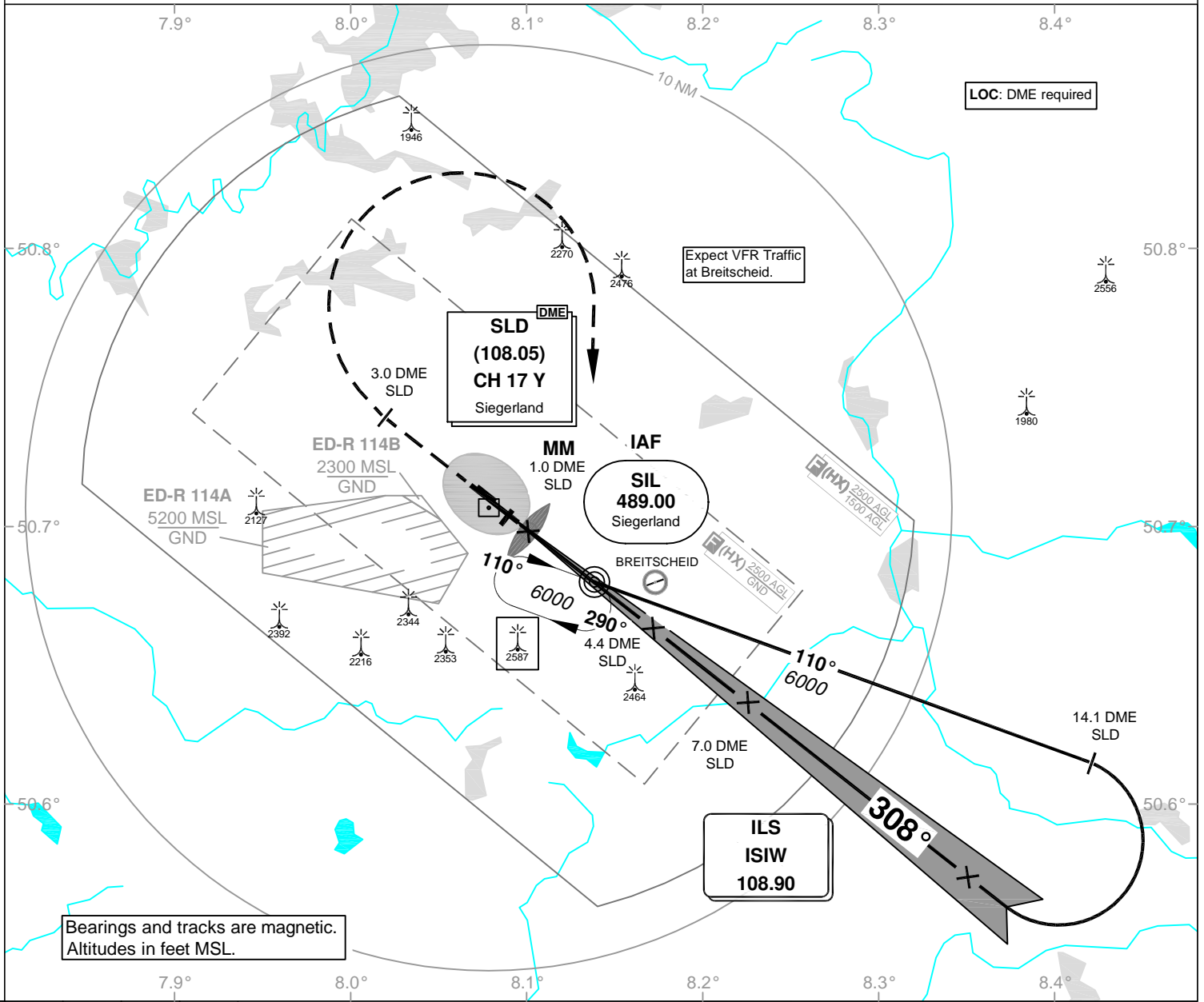
SIEMERLAND EDGS

Elevation: THR 31 ELEV 1928
VAR: 1°E

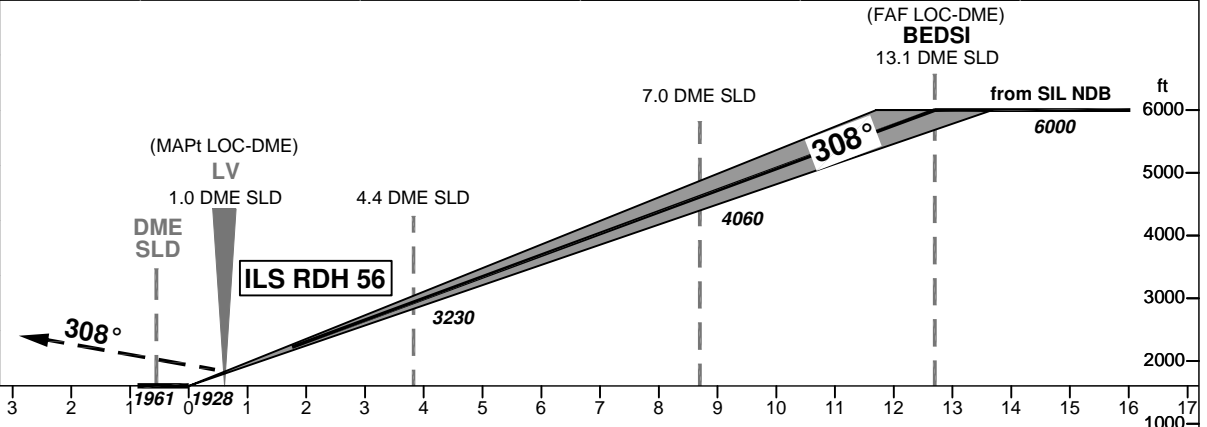
ATIS 128.70
LANGEN RADAR 124.90
LANGEN RADAR 124.72

TOWER 120.37
INFO 122.50

ILS or LOC
RWY 31



OCA (OCH)	ILS CAT I	LOC DME	CIRCLING**
CAT A	2151 (223)	2430 (500)	2430 (460)
CAT B	2161 (233)	2430 (500)	2460 (500)
CAT C*	2171 (243)	2430 (500)	2560 (600)
CAT D			
CAT E			
Large Aircraft			



MISSED APPROACH: Climb straight ahead on track 308° SIL to 3.0 SLD, RT to SIL climbing 6000.

DME SLD	2	3	4	5	6	7	8	9	10
DME THR	1.5	2.5	3.5	4.5	5.5	6.5	7.5	8.5	9.5
ALTITUDE	2470	2780	3100	3420	3740	4060	4380	4700	5010

*PPR. **Northeast of Aerodrome only.

VATSIM Germany Standard Instrument Departure Chart

SIEGERLAND EDGS

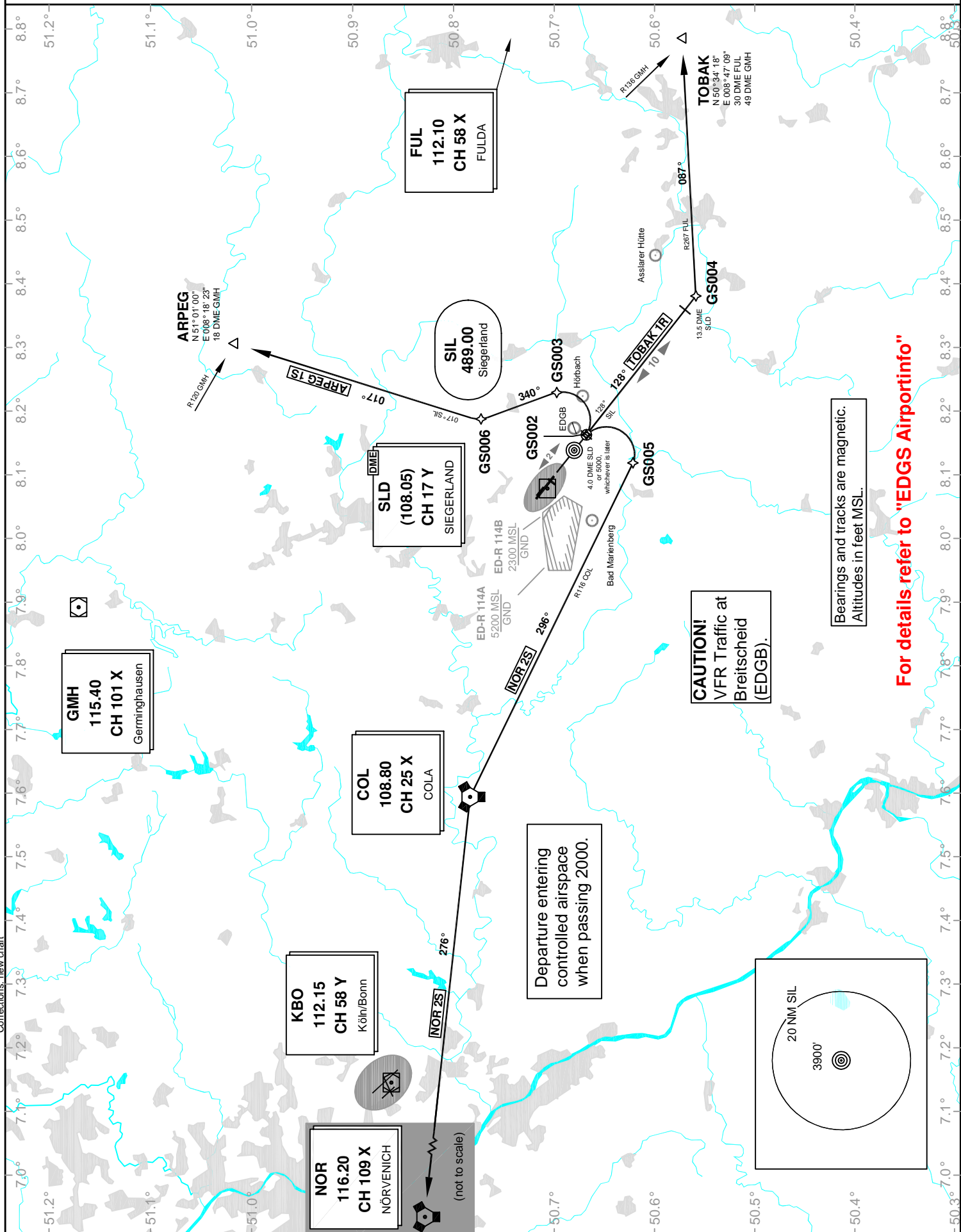
Transition Altitude: 5000 ft.

ATIS nil
Langen Radar 124.90
121.05

Tower 120.37
INFO 122.50

SID RWY 13

VAR: 1°E



For details refer to "EDGS Airportinfo"

Corrections: new chart

VATSIM Germany Standard Instrument Departure Chart

SIEGERLAND EDGS

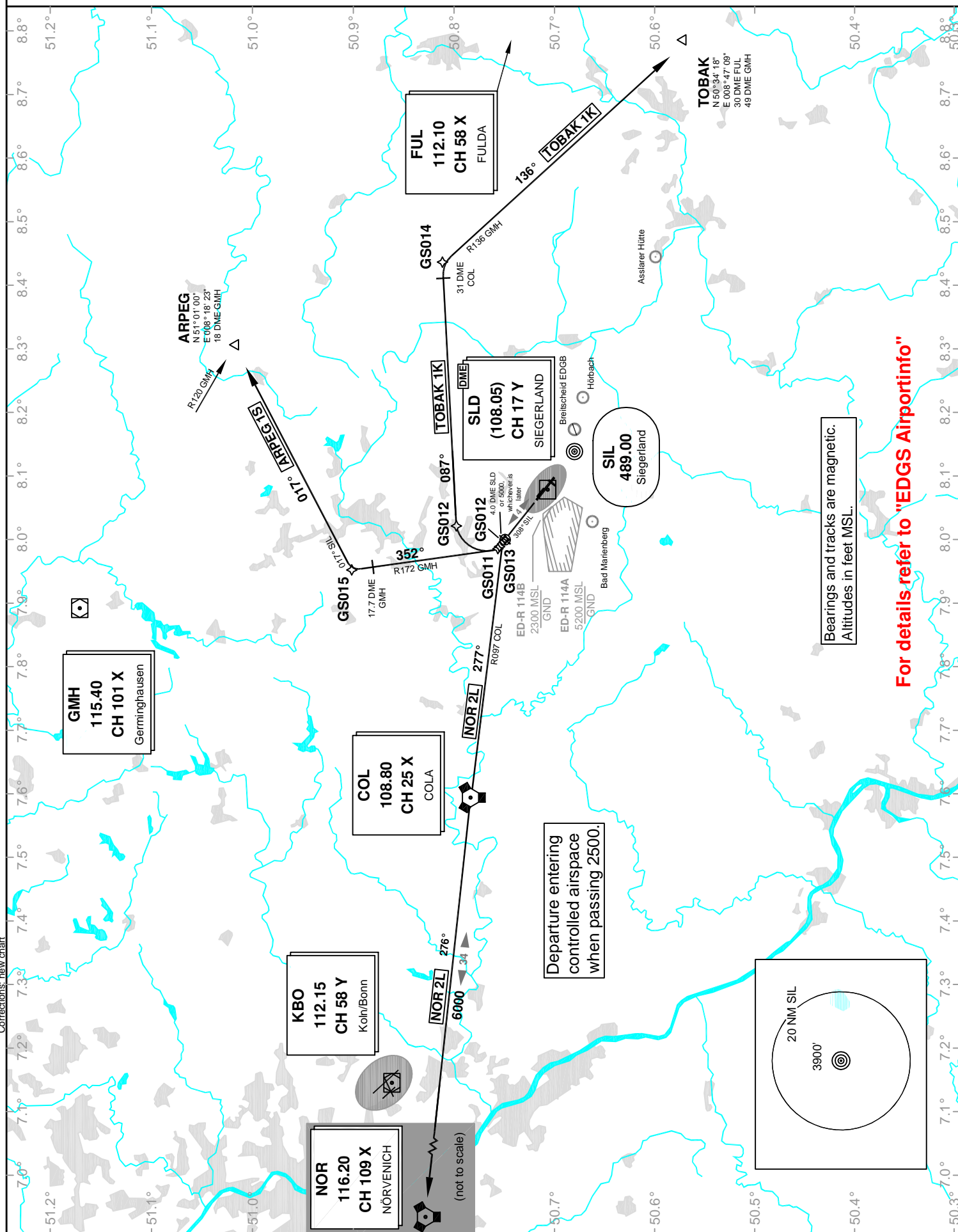
Transition Altitude: 5000 ft.

ATIS nil
Langen Radar 124.90
121.05

Tower 120.37
INFO 122.50

SID RWY 31

VAR: 1°E



Corrections: new chart