

VATSIM Germany Standard Instrument Arrival Chart



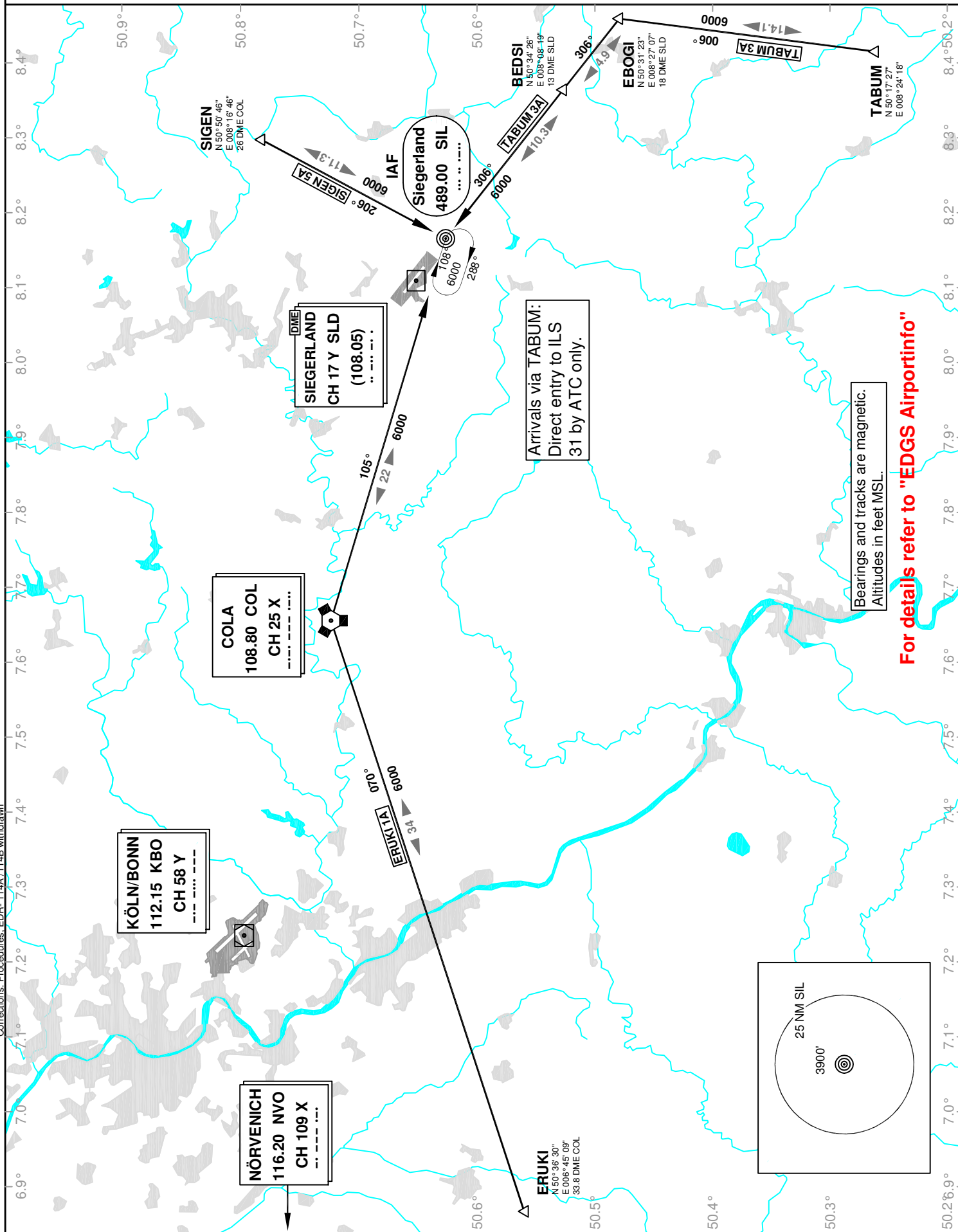
SIEGERLAND EDGS STAR RWY 13/31

Transition Altitude: 5000 ft.

ATIS nil
Langen Radar 124.90
121.05

Tower 120.37
INFO 122.50

VAR: 1°E



Corrections: Procedures: EDZ-114A, 114B withdrawn