

VATSIM Germany Standard Instrument Departure Chart



SIEGERLAND EDGS

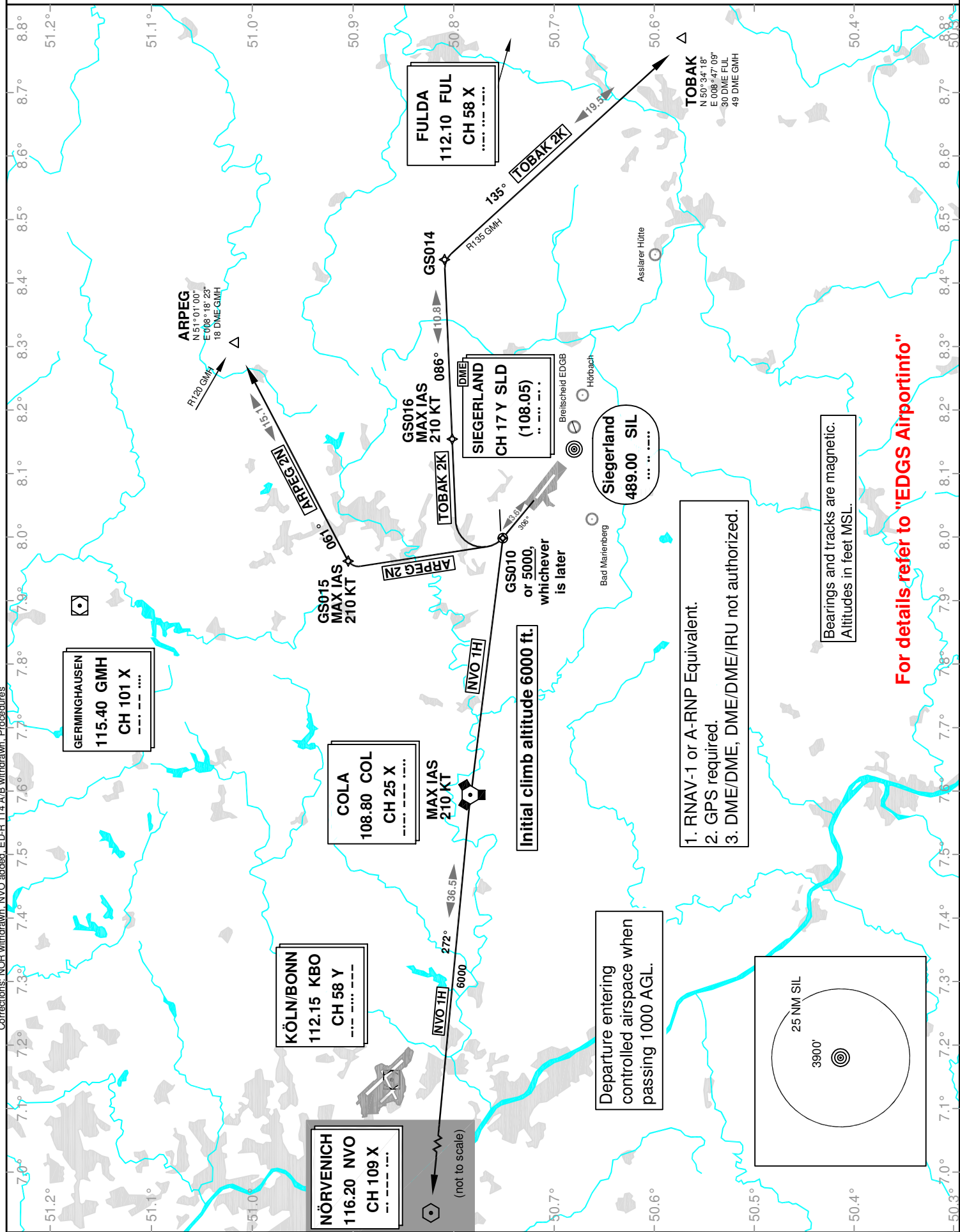
SID RWY 31

Transition Altitude: 5000 ft.

ATIS nil
Langen Radar 124.90
121.05

Tower 120.37
INFO 122.50

VAR: 1°E



1. RNAV-1 or A-RNP Equivalent.
2. GPS required.
3. DME/DME, DME/DME/IRU not authorized.

For details refer to "EDGS Airportinfo"

Corrections: NOR withdrawn, NVO added, EDR 11.4 A/B withdrawn, Procedures.