

# VATSIM Germany Standard Instrument Departure Chart



## SIEGERLAND EDGS

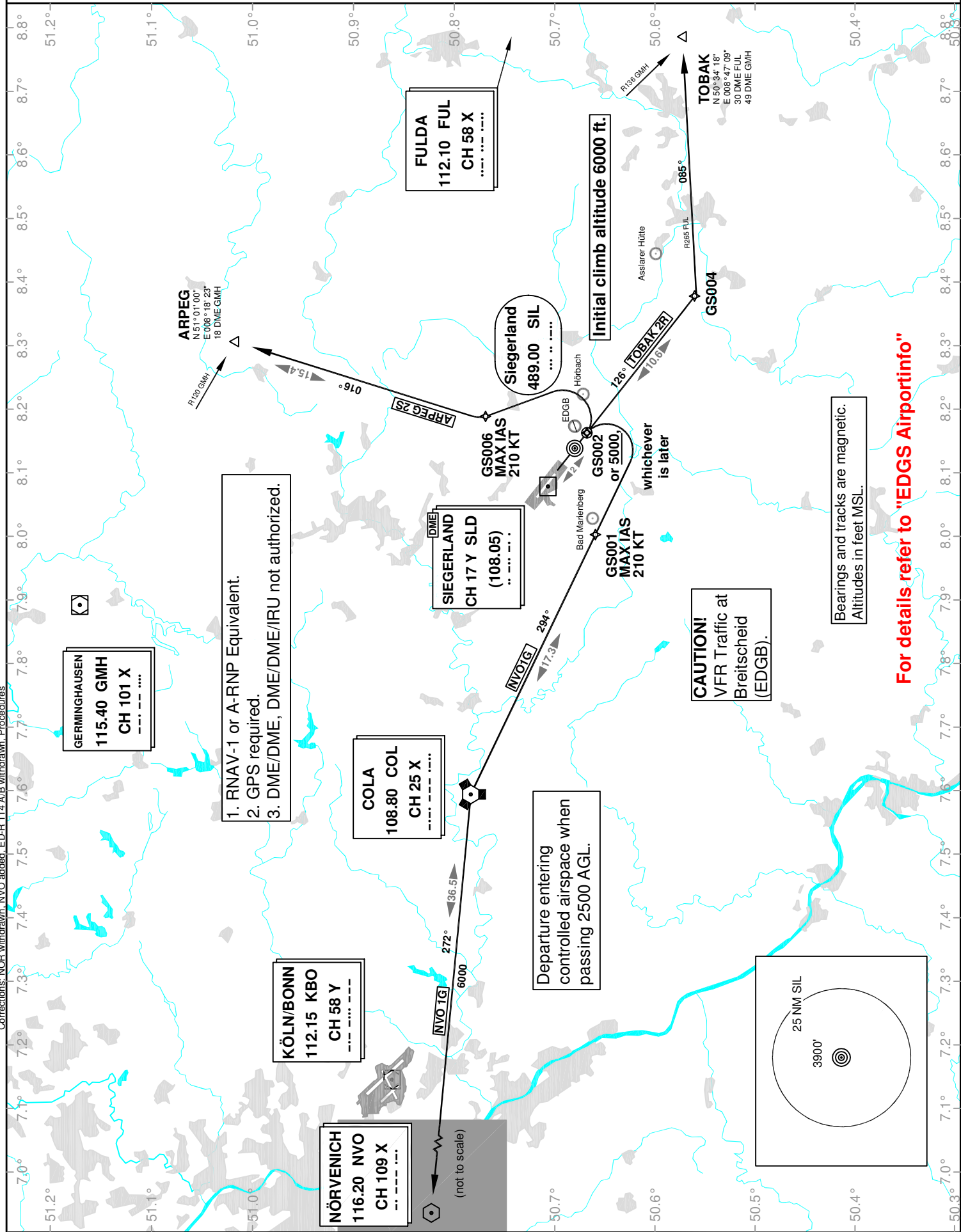
Transition Altitude: 5000 ft.

ATIS nil  
Langen Radar 124.90  
121.05

Tower 120.37  
INFO 122.50

### SID RWY 13

VAR: 1°E



Corrections: NOR withdrawn, NVO added, EDR 11.4 A/B withdrawn, Procedures