

For flight simulator use only. Not to be used for real world flight.

# vACC-Germany Standard Instrument Departure Chart

MANNHEIM-CITY  
EDFM

Transition Altitude: 5000 ft

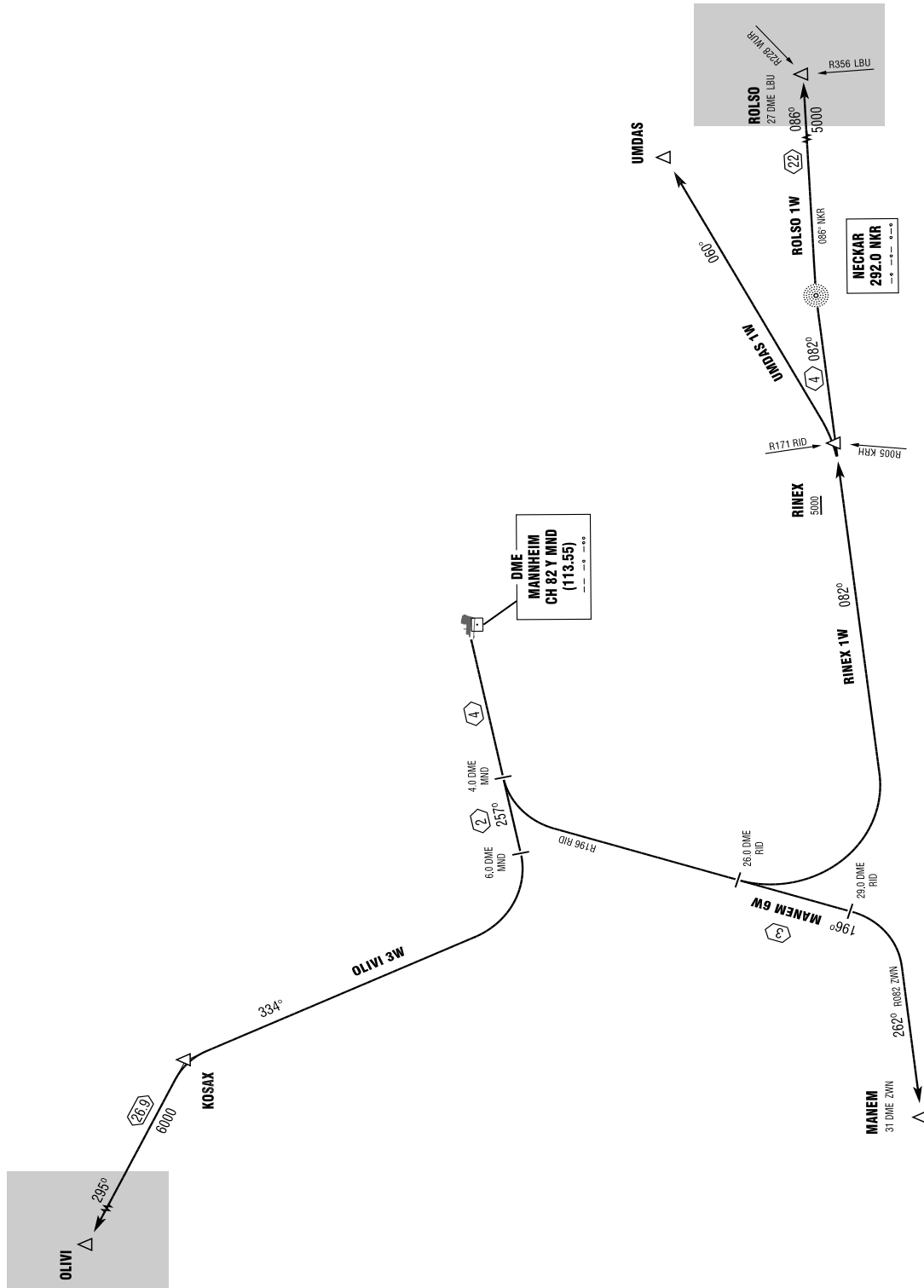
ATIS: 136.550

Ground:  
Tower: 118.400  
Center: 127.500

SID  
RWY 27

VAR: 1° E

Delivery:



WARNING: CLOSE-IN OBSTACLES. SEE OBSTACLE CHART  
CAUTION: MOUNTAINIOUS TERRAIN EAST OF AERODROME  
ATTENTION: PROCEDURES ARE SUBJECT TO LOCAL FLYING  
RESTRICTION ACCORDING AIP EDFM AD 2.20

