

vACC-Germany Instrument Approach Chart

MANNHEIM-CITY
EDFM

Elevation: 309 ft

ATIS: 136.550

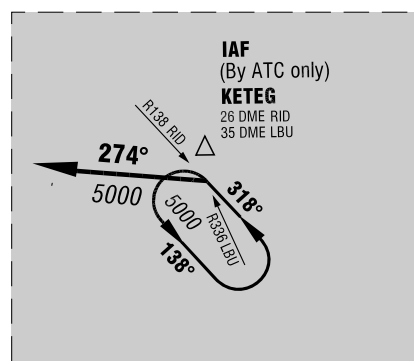
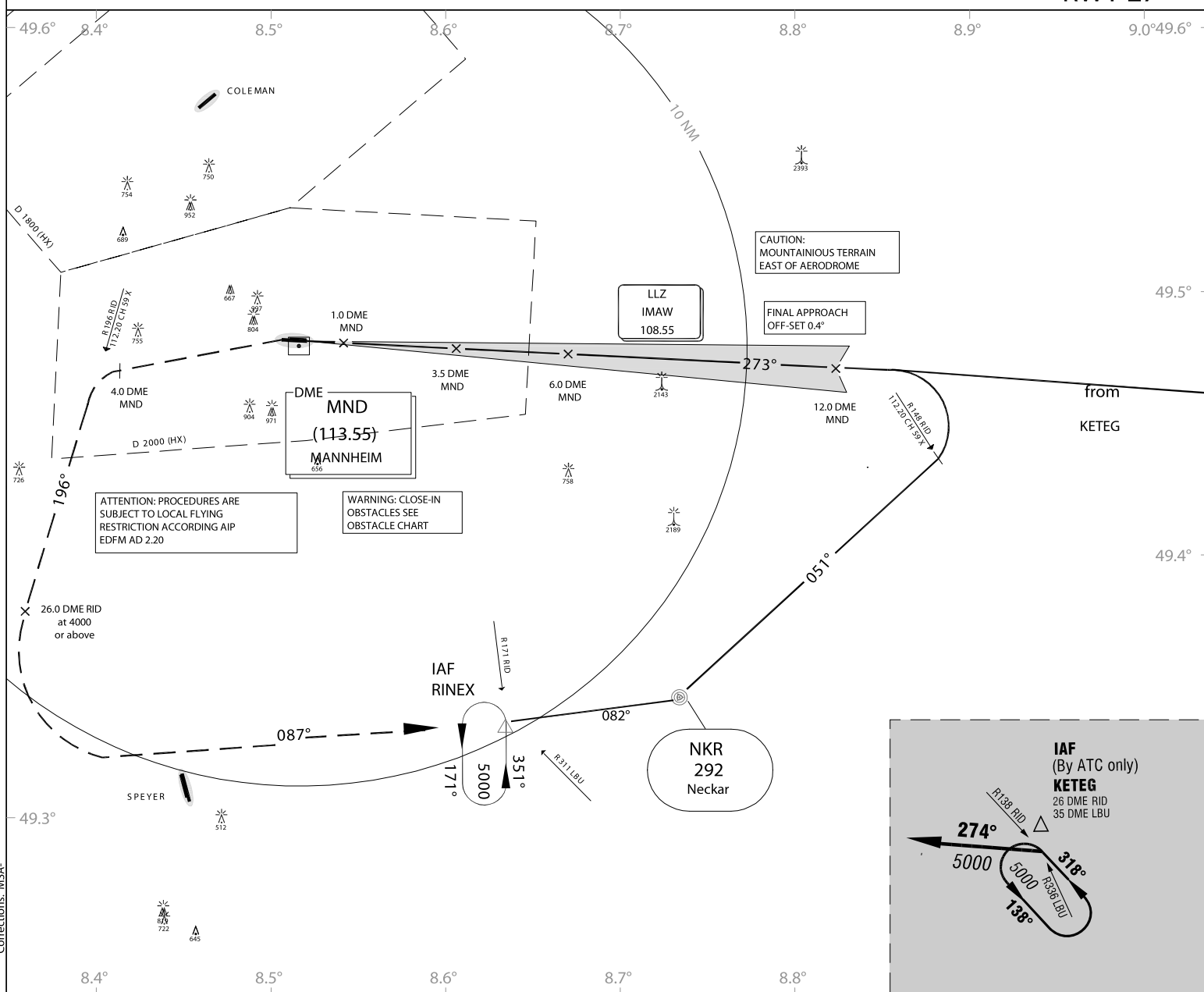
Tower: 118.400

VAR: 1°E

Arrival:

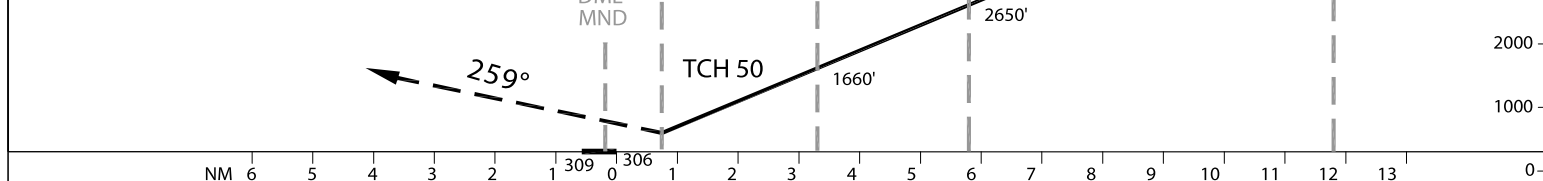
Ground:
Center: 127.500

LOC
RWY 27



| | | |
|-----------|-----------|-------------|
| OCA (OCH) | LOC* | CIRC LING** |
| CAT_A | 760 (450) | 1300 |
| CAT_B | 760 (450) | 1300 |

* 1500m GROUND VISIBILITY REQUIRED
** CIRCLING SOUTH OF AERODROME ONLY. 3000m VISIBILITY; 1100ft CEILING REQUIRED



MISSED APPROACH: On track 259° to 4.0 DME MND, LT, to intercept R196 RID; LT, on bearing 082° inbound NKR NDB to RINEX, RID to 26.0 DME climbing to 5000.

| | | | | | | | | | | |
|----------|------|------|------|------|------|------|------|------|------|------|
| DME MND | 2 | 3 | 4 | 5 | 6 | 7 | 8 | 9 | 10 | 11 |
| DIST THR | 1.8 | 2.8 | 3.8 | 4.8 | 5.8 | 6.8 | 7.8 | 8.8 | 9.8 | 10.8 |
| ALTITUDE | 1070 | 1470 | 1860 | 2260 | 2650 | 3050 | 3440 | 3840 | 4230 | 4630 |

