

VATSIM Germany
Standard Instrument Departure Chart
Stuttgart
EDDS
SIDs with Route Designator HOTEL
RWY 07

Designator	Route	After Take-Off		Remarks	
		Climb to	Contact		
ABTAL 4H	ABTAL FOUR HOTEL On R072 STG to ABTAL (Δ). Climb with 4.1 % (250 ft/NM) or more until passing 4000. GPS/FMS RNAV: [A1700+] - DS030 - ABTAL.	5000 ft	Langen Radar 125.050*	PDG 4.1% (250 ft/NM) due to airspace structure.	
DKB 4H	DINKELSBÜHL FOUR HOTEL On R072 STG to 8.6 DME STG; LT, intercept R228 DKB to DKB (Δ). Climb with 4.1 % (250 ft/NM) or more until passing 4000. GPS/FMS RNAV: [A1700+] - DS032[L] - DKB.			1. PDG 4.1% (250 ft/NM) due to airspace structure. 2. Only for flights to continue via N869 northeastbound or with destination EDDN, EDTY, EDQ*.	
ETASA 2H	ETASA TWO HOTEL On R072 STG to 5.6 DME STG; LT, intercept R152 LBU to LBU (Δ); on R332 LBU to ETASA (Δ). Climb with 3.6% (220 ft/NM) or more until passing 4000. GPS/FMS RNAV: [A1700+] - <u>DS031</u> [L] - DS038 - LBU[L] - ETASA.			1. PDG 3.6% (220 ft/NM) due to airspace structure. 2. Only for flights to EDDF, EDFC, EDFE, ETOU.	
GEBNO 6H	GEBNO SIX HOTEL On R072 STG to 8.6 DME STG; LT, intercept R228 DKB to KEMAV (Δ); track 359° to GEBNO (Δ). Climb with 4.1 % (250 ft/NM) or more until passing 4000. GPS/FMS RNAV: [A1700+] - DS032[L] - KEMAV[L] - GEBNO.			1. PDG 4.1% (250 ft/NM) due to airspace structure. 2. After passing KEMAV BRNAV equipment necessary. 3. Only for flights to continue via Z76 northbound with MAX FL 180.	
KRH 2H	KARLSRUHE TWO HOTEL On R072 STG to 5.6 DME STG; LT, intercept R152 LBU to LBU (Δ); on R277 LBU (R097 KRH) via ABGAN (Δ) to KRH (Δ). Climb with 3.6 % (220 ft/NM) or more until passing 4000. GPS/FMS RNAV: [A1700+] - <u>DS031</u> [L] - DS038 - LBU[L] - ABGAN - KRH.			1. PDG 3.6% (220 ft/NM) due to airspace structure. 2. Only for flights to EDDR, EDRZ, EDSB, ETAR, ETIP. 3. MAX FL 80, except weekends.	
OKIBA 4H	OKIBA FOUR HOTEL On R072 STG to 9.8 DME STG; LT, on track 354° to NOTGA (Δ); then on track 332° to OKIBA (Δ). Climb with 4.1% (250 ft/NM) or more until passing 4000. GPS/FMS RNAV: [A1700+] - DS035[L] - NOTGA[L] - OKIBA.			1. PDG 4.1% (250 ft/NM) due to airspace structure. 2. After passing 5000 BRNAV equipment necessary. 3. Only for flights with RFL 200 or more.	
ROTWE 7H	ROTWE SEVEN HOTEL On R072 STG to 3.2 DME STG; CAT A: RT, track 139°; when passing R098 STG, RT; CAT B, C, D: continuous RT with MAX IAS 230 KT; on track 248° to TEDGO (Δ); RT, on track 253° to ROTWE (Δ). Climb with 5.3% (320 ft/NM) or more until passing 4000. GPS/FMS RNAV: [A1700+] - <u>DS030</u> [R] - DS033[R] - DS034[K230-] - TEDGO[R] - ROTWE.			1. PDG 5.3% (320 ft/NM) due to airspace structure. 2. Initial departure turn with 23° bank. 3. After passing 3000 BRNAV equipment necessary. 4. Via NATO only for jet aircraft.	
STG 2H	STUTT GART TWO HOTEL On R072 STG to 3.4 DME STG; RT, intercept R096 STG to STG (Δ). Climb with 5.3% (320 ft/NM) or more until passing 4000. GPS/FMS RNAV: [A1700+] - <u>DS036</u> [R] - DS037[K125-] - STG.			Stuttgart Director 119.850*	1. PDG 5.3% (320 ft/NM) due to airspace structure. 2. Initial departure turn with 20° bank. 3. Only for local IFR training flights at EDDS.
SUL 3H	SULZ THREE HOTEL On R072 STG to 3.2 DME STG; CAT A: RT, track 139°; when passing R098 STG, RT; CAT B, C, D: continuous RT with MAX IAS 230 KT; on track 248° to TEDGO (Δ); LT, on track 238° to SUL (Δ). Climb with 5.3% (320 ft/NM) or more until passing 4000. GPS/FMS RNAV: [A1700+] - <u>DS030</u> [R] - DS033[R] - DS034[K230-] - TEDGO[L] - SUL.			Langen Radar 125.050*	1. PDG 5.3% (320 ft/NM) due to airspace structure. 2. Initial departure turn with 23° bank. 3. After passing 3000 BRNAV equipment necessary. 4. Only for piston engine and turboprop aircraft. 5. Jet aircraft only with destination EDTL, EDNY, LSZH and LSZR.

(Sample: DS030 fly-over way point)

* Departure frequency may deviate from the frequency published. Check ATIS for current departure frequency.

Contact Langen Radar immediately after take-off!

VATSIM Germany
Standard Instrument Departure Chart
Stuttgart
EDDS
SIDs with Route Designator HOTEL
RWY 07

Designator	Route	After Take-Off		Remarks
		Climb to	Contact	
TAGIK 2H	TAGIK TWO HOTEL On R072 STG to 5.6 DME STG; LT, intercept R152 LBU to LBU (Δ); on R277 LBU to ABGAN (Δ); then on track 003° to TAGIK (Δ). Climb with 3.6% (220 ft/NM) or more until passing 4000. GPS/FMS RNAV: [A1700+] - <u>DS031</u> [L] - DS038 - LBU[L] - ABGAN[R] - TAGIK.	5000 ft	Langen Radar 125.050*	<ol style="list-style-type: none"> 1. PDG 3.6% (220 ft/NM) due to airspace structure. 2. After passing ABGAN BRNAV equipment necessary. 3. Only for flights to continue via ASKIK or ABUMO with MAX FL 240.
TEDGO 2H	TEDGO TWO HOTEL On R072 STG to 3.2 DME STG; CAT A: RT, track 139°; when passing R098 STG, RT; CAT B, C, D: continuous RT with MAX IAS 230 KT; on track 248° to TEDGO (Δ). Climb with 5.3% (320 ft/NM) or more until passing 4000. GPS/FMS RNAV: [A1700+] - <u>DS030</u> [R] - DS033[R] - DS034[K230-] - TEDGO.		Stuttgart Director 119.850*	<ol style="list-style-type: none"> 1. PDG 5.3% (320 ft/NM) due to airspace structure. 2. Initial departure turn with 23° bank. 3. After passing 3000 BRNAV equipment necessary. 4. Only for local IFR training flights at EDDS and for flights to ETHL.
VESID 2H	VESID TWO HOTEL On R072 STG to 5.6 DME STG; LT, intercept R152 LBU to LBU (Δ); on R277 LBU to ABGAN (Δ); then on track 337° to VESID (Δ). Climb with 3.6 % (220 ft/NM) or more until passing 4000. GPS/FMS RNAV: [A1700+] - <u>DS031</u> [L] - DS038 - LBU[L] - ABGAN[R] - VESID.		Langen Radar 125.050*	<ol style="list-style-type: none"> 1. PDG 3.6% (220 ft/NM) due to airspace structure. 2. After passing ABGAN BRNAV equipment necessary.
KUNOD 1H	KUNOD ONE HOTEL On R072 STG to 7.5 DME STG; RT (MAX IAS 220 KT until established on track 165°), on track 165° to KUNOD (Δ). Climb with 4.1 % (250 ft/NM) or more until passing 5000. GPS/FMS RNAV: [A1700+] - <u>DS039</u> [R] - DS054[K220-] - KUNOD.			<ol style="list-style-type: none"> 1. PDG 4.1% (250 ft/NM) due to airspace structure. 2. After passing 4000 BRNAV equipment necessary. 3. Initial departure turn calculated with max. IAS 220 KT / 25° bank.

(Sample: DS030 fly-over way point)

* Departure frequency may deviate from the frequency published. Check ATIS for current departure frequency.

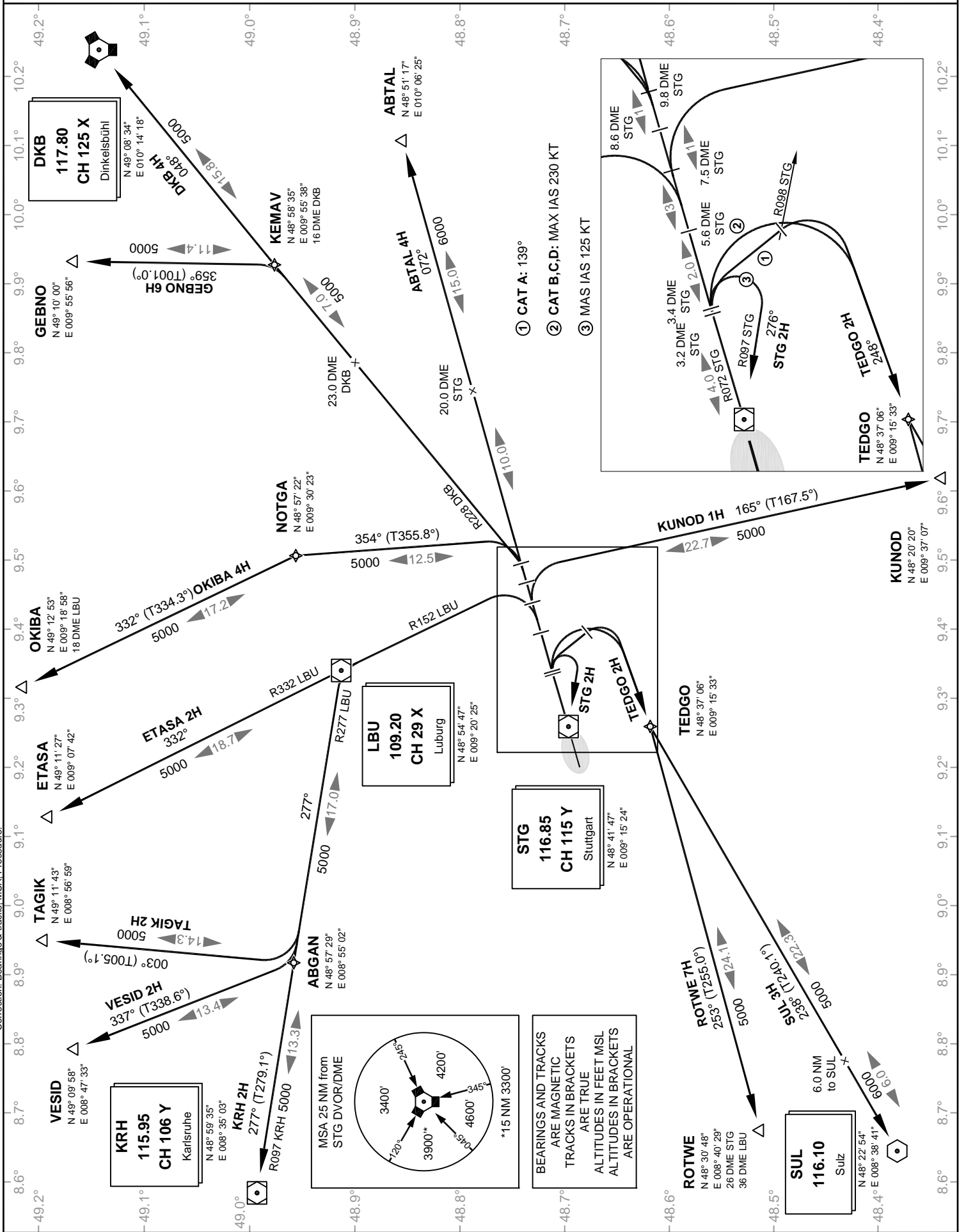
Contact Langen Radar immediately after take-off!

VATSIM Germany Standard Instrument Departure Chart

**Stuttgart
EDDS
SID
RWY 07**

Transition Altitude: 5000 ft. ATIS 126.120 Tower 118.800
Langen Radar 125.050 Ground 118.600
Director 119.850

VAR: 2° E



Correction: Bearings & tracks, MSA Procedure.

VATSIM Germany GPS / FMS RNAV Departure Chart

Stuttgart EDDS RNAV SID RWY 07

Transition Altitude: 5000 ft. ATIS 126.120 Tower 118.800
Langen Radar 125.050 Ground 118.600
VAR: 2° E Director 119.850

