

VATSIM Germany Instrument Approach Chart

Stuttgart EDDS

Elevation: THR25 ELEV 1181

ATIS 126.120
Langen Radar 125.050
119.200
Director 119.850

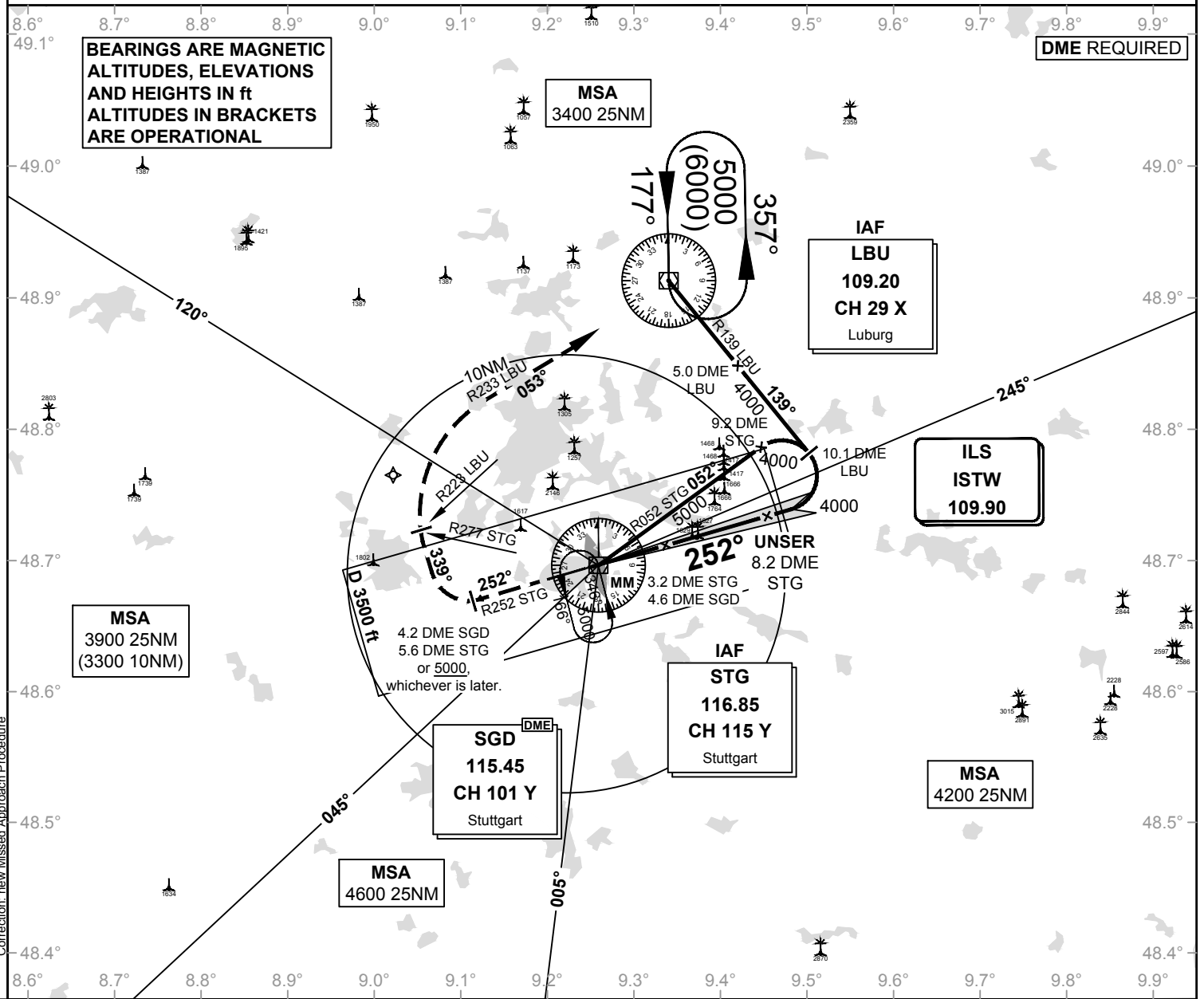
Tower 118.800
Ground 118.600

ILS CAT II & III or LOC RWY 25

VAR: 2° E

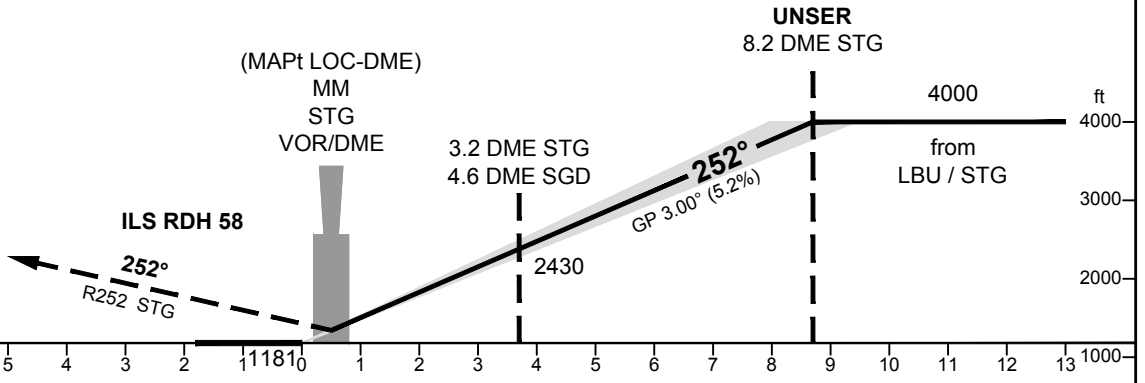
DME REQUIRED

BEARINGS ARE MAGNETIC
ALTITUDES, ELEVATIONS
AND HEIGHTS IN ft
ALTITUDES IN BRACKETS
ARE OPERATIONAL



Correction: new Missed Approach Procedure

OCA (OCH)	ILS CAT I	ILS CAT II	LOC DME
CAT A	1333 (152)	1244 (63)	1590 (410)
CAT B	1343 (162)	1261 (80)	1590 (410)
CAT C	1353 (172)	1274 (93)	1590 (410)
CAT D	1362 (181)	1287 (106)	1590 (410)



MISSSED APPROACH: Climb on R252 STG to 5000; when crossing 4.2 DME SGD/ 5.6 DME STG or 5000, whichever is later, RT on track 339°, when crossing R277 STG / R223 LBU; RT, on R233 LBU to LBU VOR/DME.

DME STG	1	2	3	4	5	6	7	8	GS	kt	80	100	120	140	160	180
DIST THR	1.5	2.5	3.5	4.5	5.5	6.5	7.5	8.5	3.2 DME STG - THR (3.8 NM)	MIN:SEC	2:51	2:17	1:54	1:38	1:26	1:16
ALTITUDE	1720	2040	2360	2680	3000	3320	3630	3950	Rate of descent (5.2%)	ft / MIN	420	530	640	740	850	960

CAT IIIA AND CAT IIIB (MNM RVR 75m) APPROVED. **LOC-DME:** Timing not authorized for defining the MAPt.

VATSIM Germany Instrument Approach Chart

**Stuttgart
EDDS
VOR
RWY 25**

Elevation: THR25 ELEV 1181

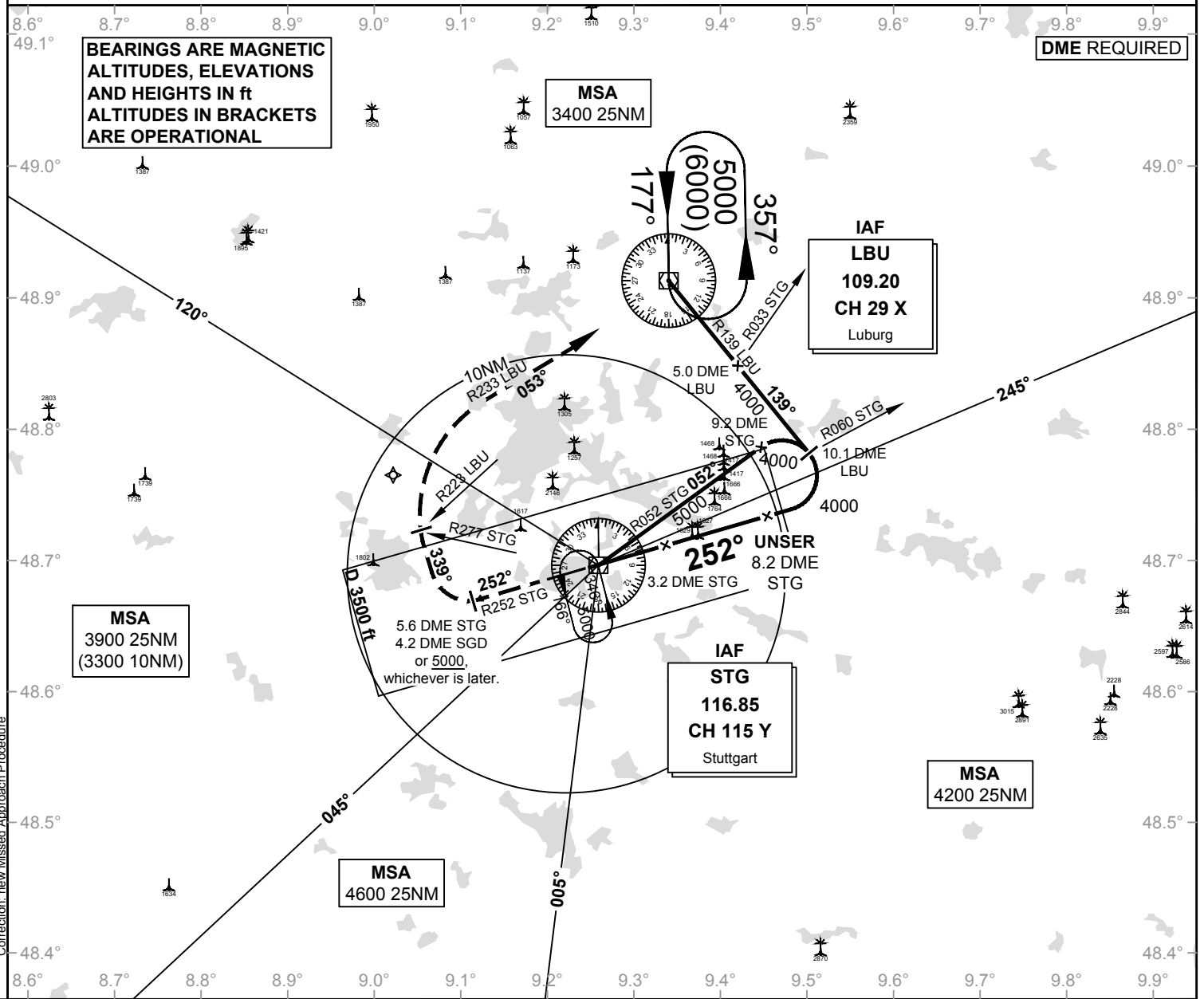
ATIS 126.120
Langen Radar 125.050
119.200
Director 119.850

Tower 118.800
Ground 118.600

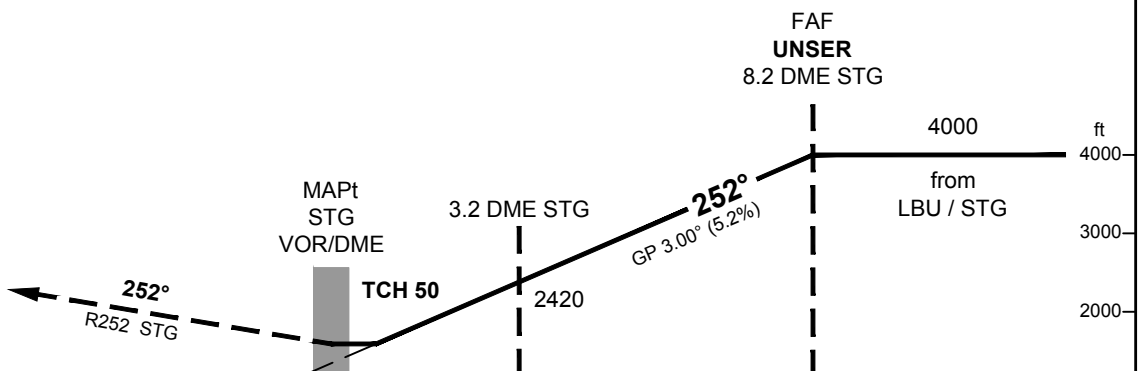
VAR: 2° E

DME REQUIRED

**BEARINGS ARE MAGNETIC
ALTITUDES, ELEVATIONS
AND HEIGHTS IN FT
ALTITUDES IN BRACKETS
ARE OPERATIONAL**



OCA (OCH)	VOR/DME
CAT A	1590 (410)
CAT B	1590 (410)
CAT C	1590 (410)
CAT D	1590 (410)



MISSED APPROACH: Climb on R252 STG to 5000; when crossing 4.2 DME SGD/ 5.6 DME STG or 5000, whichever is later, RT on track 339°, when crossing R277 STG / R223 LBU; RT, on R233 LBU to LBU VOR/DME.

DME STG	1	2	3	4	5	6	7	8	GS	kt	80	100	120	140	160	180
DIST THR	1.5	2.5	3.5	4.5	5.5	6.5	7.5	8.5	3.2 DME STG - MAPt (3.2 NM)	MIN:SEC	2:24	1:55	1:36	1:22	1:12	1:04
ALTITUDE	1710	2030	2350	2670	2990	3310	3620	3940	Rate of descent (5.2%)	ft / MIN	420	530	640	740	850	960

Timing not authorized for defining the MAPt.

VATSIM Germany Instrument Approach Chart

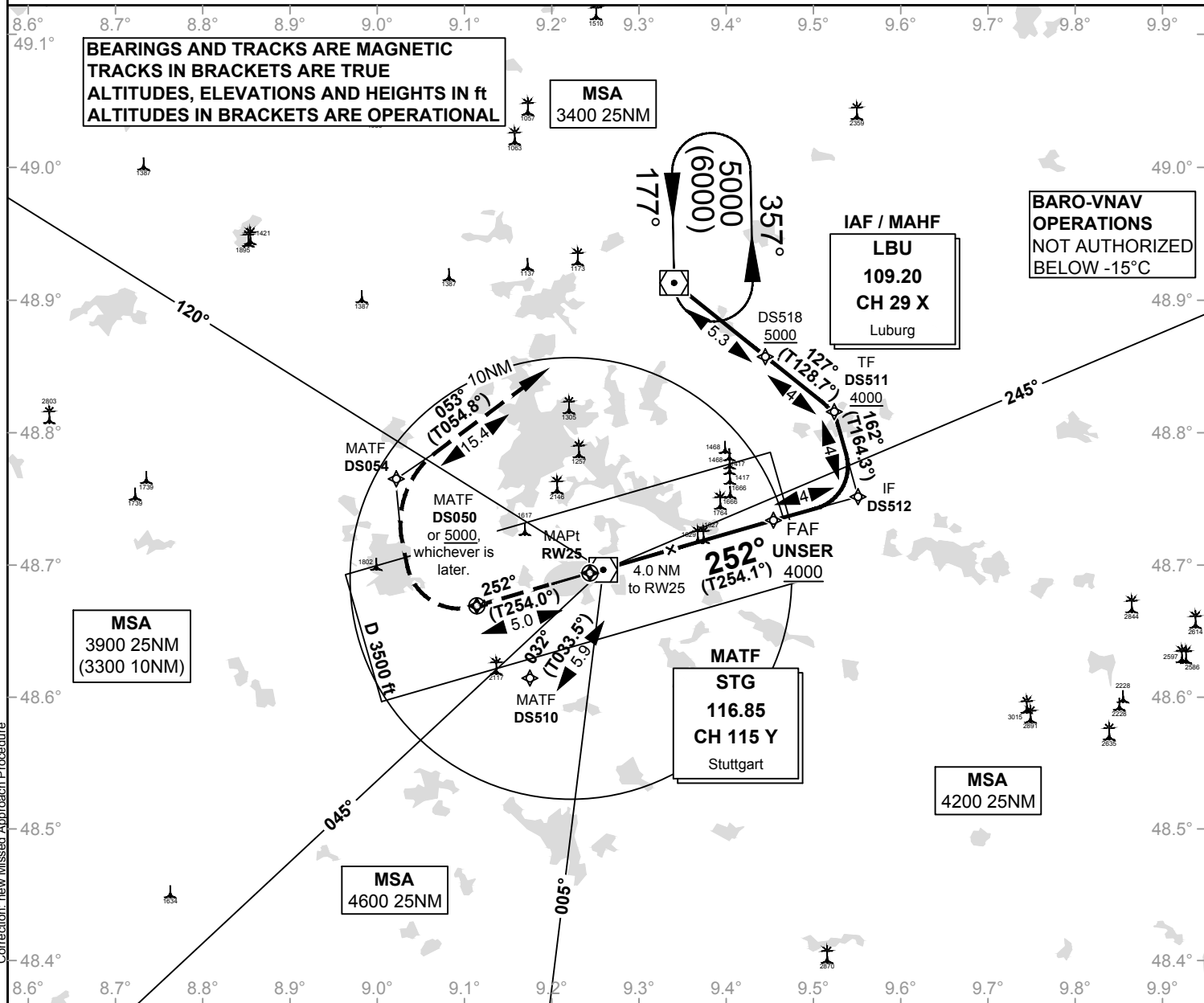
Stuttgart
EDDS
RNP
RWY 25

Elevation: THR25 ELEV 1181

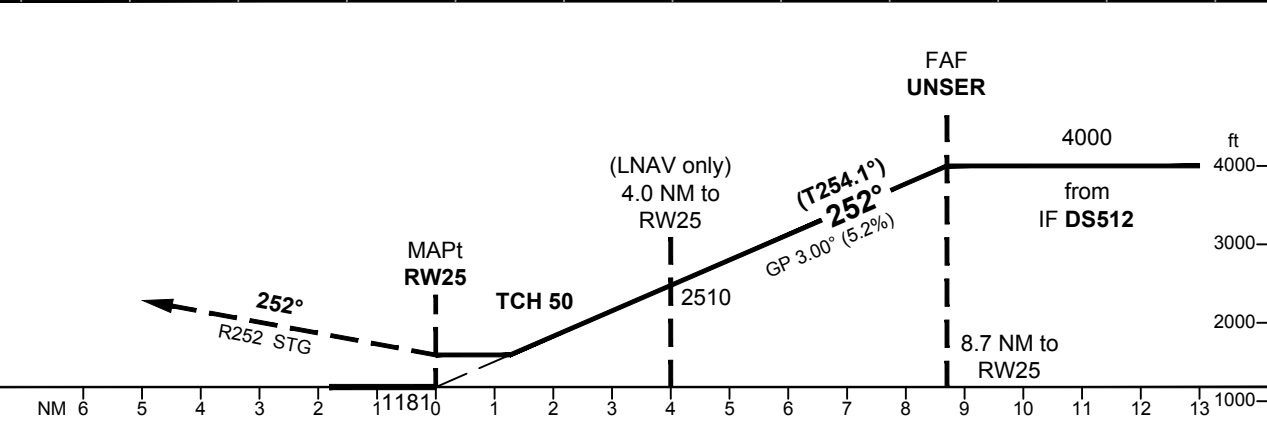
ATIS 126.120
Langen Radar 125.050
119.200
Director 119.850

Tower 118.800
Ground 118.600

VAR: 2° E



OCA (OCH)	LNAV	LNAV / VNAV
CAT A	1590 (410)	1590 (410)
CAT B	1590 (410)	1590 (410)
CAT C	1590 (410)	1590 (410)
CAT D	1620 (440)	1590 (410)



MISSED APPROACH: Climb on course 252° to 5000; when crossing DS050 or 5000, whichever is later, RT; direct DS054; RT, on track 053° to LBU. DS050 - [A5000; R] - DS054 - LBU [A5000].

DIST THR / RW25	2	3	4	5	6	7	8
ALTITUDE	1870	2190	2510	2830	3150	3460	3780

GS	kt	80	100	120	140	160	180
UNSER - RW25 (8.7 NM)	MIN:SEC	6:32	5:13	4:21	3:44	3:16	2:54
Rate of descent (5.2%)	ft / MIN	420	530	640	740	850	960

Timing not authorized for defining the MAPt.

Correction: new Missed Approach Procedure