

VATSIM Germany Instrument Approach Chart

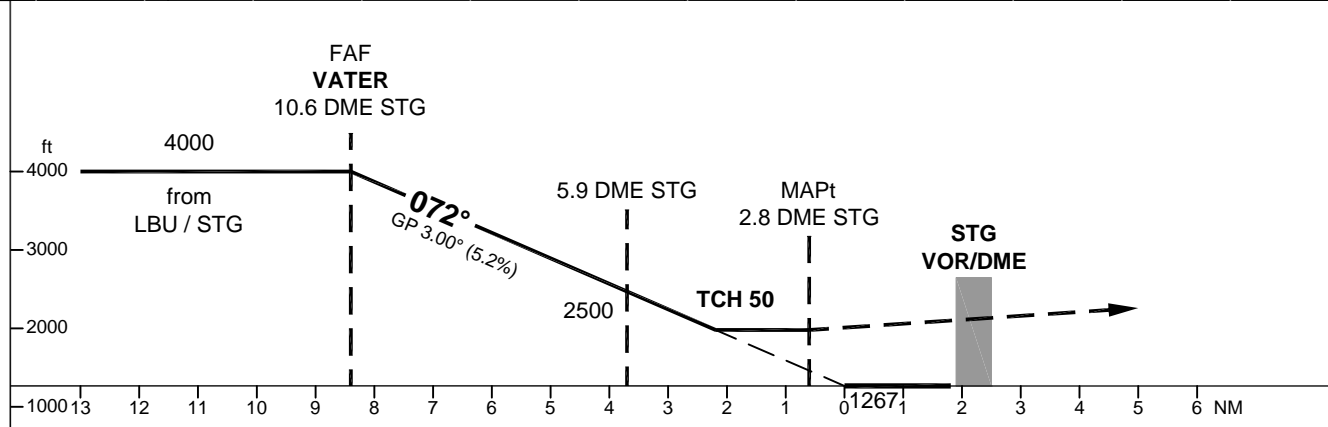
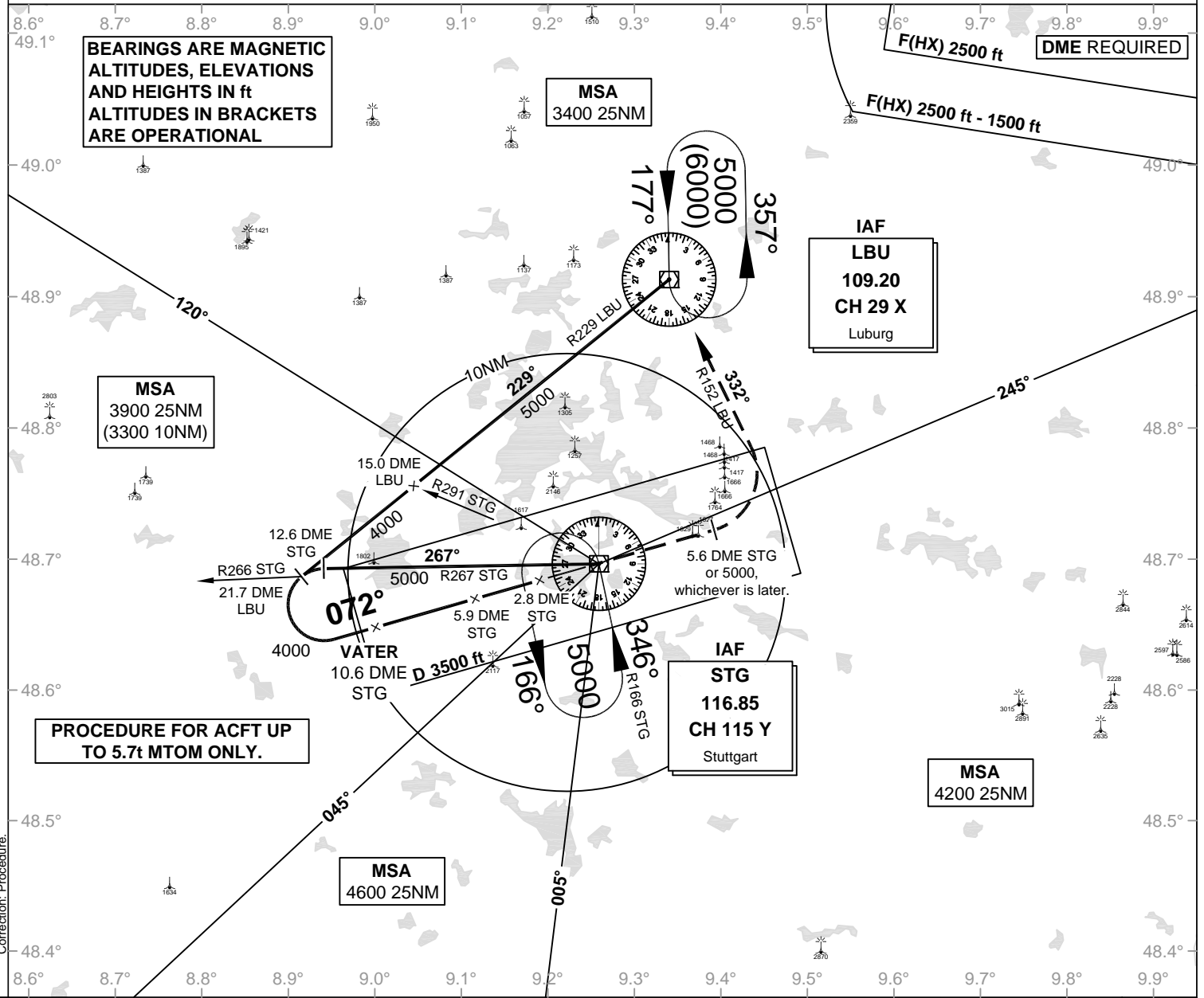
**Stuttgart
EDDS
VOR
RWY 07**

Elevation: THR07 ELEV 1267

ATIS 126.120
Langen Radar 125.050
119.200
Director 119.850

Tower 118.800
Ground 118.600

VAR: 2° E



OCA (OCH)	VOR / DME*
CAT A	1980 (710)
CAT B	1980 (710)
* ONLY FOR ACFT UP TO 5.7t MTOM.	

MISSED APPROACH: Climb straight ahead to 6000; when crossing 5.6 DME STG or 5000, whichever is later, LT to LBU VOR/DME.

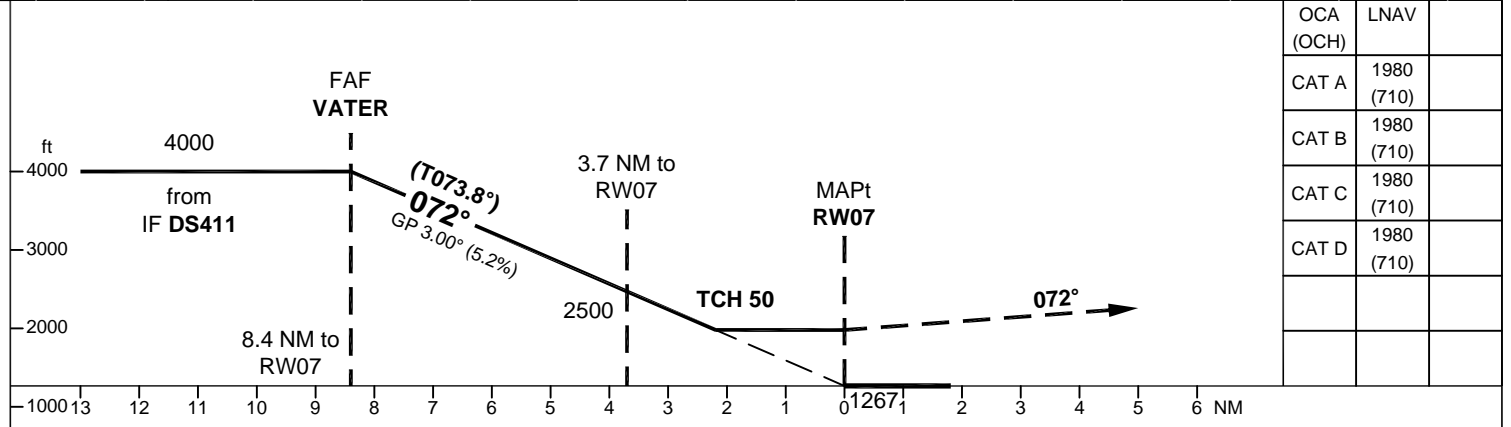
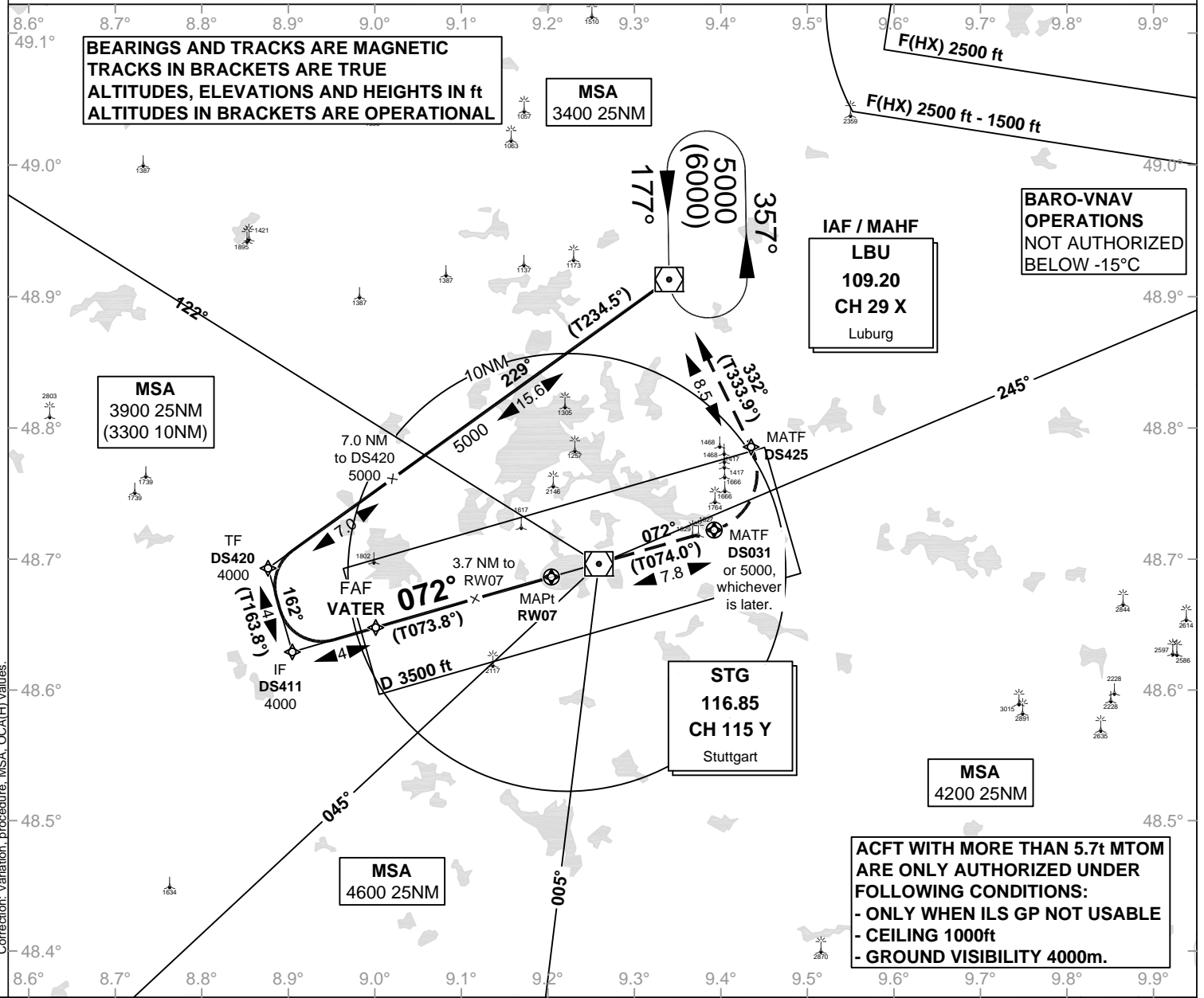
DME STG	10	9	8	7	6	5					GS	kt	80	100	120	140		
DIST THR	7.8	6.8	5.8	4.8	3.8	2.8					5.9 DME STG - MAPt (3.1 NM)	MIN:SEC	2:20	1:52	1:33	1:20		
ALTITUDE	3810	3490	3170	2850	2530	2210					Rate of descent (5.2%)	ft / MIN	420	530	640	740		

Timing not authorized for defining the MAPt.

VATSIM Germany Instrument Approach Chart

**Stuttgart
EDDS
RNAV (GPS)
RWY 07**

Elevation: THR07 ELEV 1267
 ATIS 126.120
 Tower 118.800
 Langen Radar 125.050
 Ground 118.600
 VAR: 2° E
 Director 119.850



OCA (OCH)	LNAV	
CAT A	1980 (710)	
CAT B	1980 (710)	
CAT C	1980 (710)	
CAT D	1980 (710)	

MISSED APPROACH: On track 072° to 6000; when crossing DS031 or 5000, whichever is later, LT; via DS425 on track 332° to LBU. DS031 - [A5000; L] - DS425 - LBU[A6000]

DIST THR / RW07	8	7	6	5	4	3				
ALTITUDE	3870	3550	3230	2910	2600	2280				

GS	kt	80	100	120	140	160	180
VATER - RW07 (8.4 NM)	MIN:SEC	6:18	5:02	4:12	3:36	3:09	2:48
Rate of descent (5.2%)	ft / MIN	420	530	640	740	850	960

Timing not authorized for defining the MAPt.