

VATSIM Germany Instrument Approach Chart

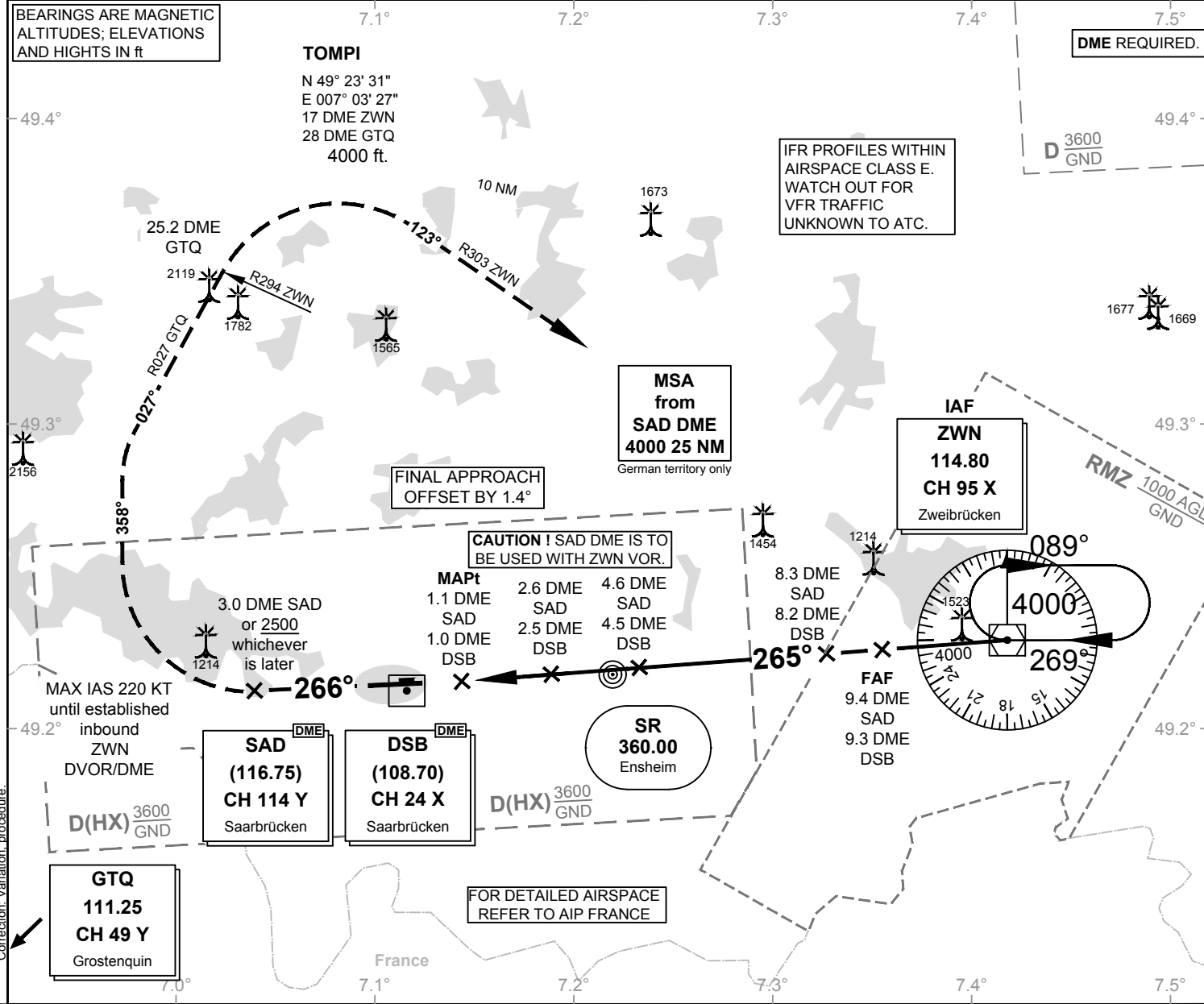
SAARBRÜCKEN
EDDR
VOR
RWY 27

Elevation: 1058 ft.

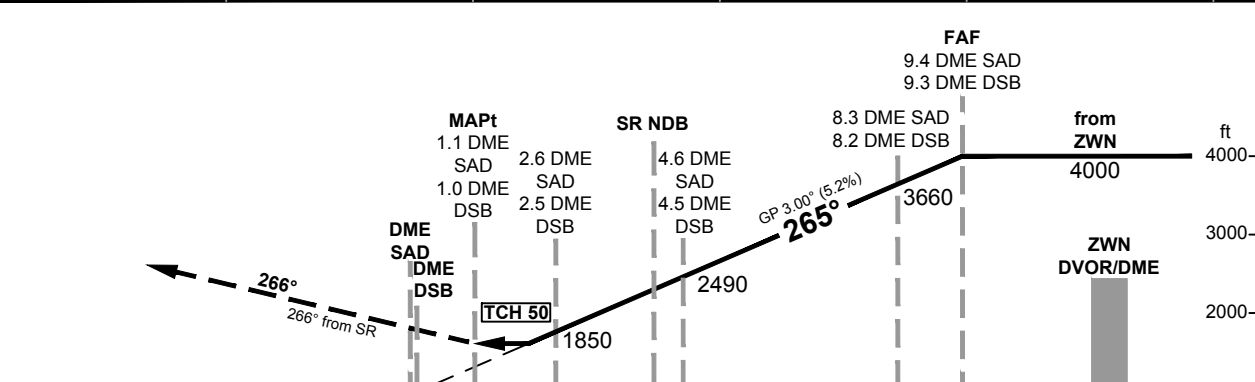
ATIS: 125.300
Langen Radar: 129.670
Tower: 118.350
118.550

VAR: 1°E

BEARINGS ARE MAGNETIC
ALTITUDES; ELEVATIONS
AND HEIGHTS IN ft



OCA (OCH)	VOR DME	CIRCLING*
CAT A	1610 (550)	1660
CAT B	1610 (550)	1720
CAT C	1610 (550)	1840
CAT D	1610 (550)	1840



MISSED APPROACH: Climb on course 266° from SR NDB to 3.0 DME SAD or 2500, whichever is later; RT, on heading 358° to intercept R027 GTQ to 25.2 DME GTQ (crossing R294 ZWN); RT; to intercept R303 ZWN; on R303 ZWN to ZWN DVOR/DME climbing 4000. MAX IAS 220 KT until established inbound ZWN DVOR/DME.

DME SAD	2	3	4	5	6	7	8	9
DME THR	1.7	2.7	3.7	4.7	5.7	6.7	7.7	8.7
ALTITUDE	1650	1970	2290	2610	2930	3240	3560	3880

GS	kt	80	100	120	140	160	180
3.5 DME SAD-MAPt (2.4)	MIN:SEC	1:48	1:26	1:12	1:02	0:54	0:48
Rate of descent (5.2%)	ft / MIN	420	530	640	740	850	960

Timing not authorized for defining the MAPt.