

VATSIM Germany Instrument Approach Chart

**SAARBRÜCKEN
EDDR
VOR
RWY 09**

Elevation: 1058 ft.

ATIS: 125.300
Langen Radar: 129.670
Tower: 118.350
118.550

VAR: 1°E

BEARINGS ARE MAGNETIC
ALTITUDES; ELEVATIONS
AND HEIGHTS IN ft

DME REQUIRED.

IFR PROFILES WITHIN
AIRSPACE CLASS E.
WATCH OUT FOR
VFR TRAFFIC
UNKNOWN TO ATC.

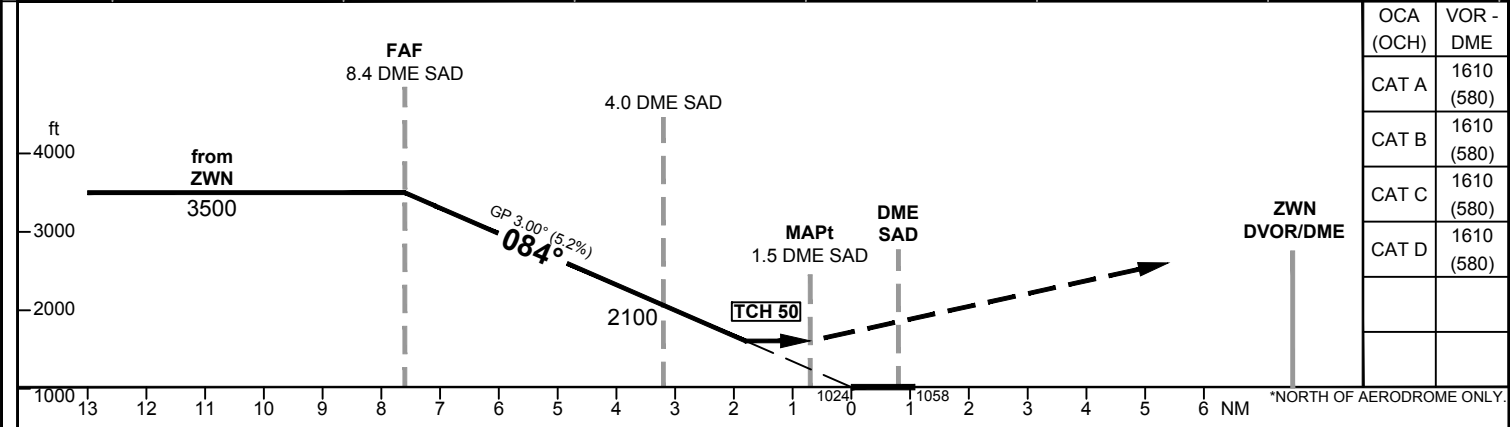
CAUTION! DURING FINAL
APPROACH SAD DME IS TO
BE USED WITH ZWN VOR.

MSA
from
SAD DME
4000 25 NM
German territory only

IAF
ZWN
114.80
CH 95 X
Zweibrücken

Correction: Variation, procedure.

FOR DETAILED AIRSPACE
REFER TO AIP FRANCE



OCA (OCH)	VOR - DME
CAT A	1610 (580)
CAT B	1610 (580)
CAT C	1610 (580)
CAT D	1610 (580)

MISSED APPROACH: Climb direct to ZWN DVOR/DME. Cross ZWN DVOR/DME at 4000. PDG 3.6% (220 FT/NM).

DME SAD	8	7	6	5	4	3			
DME THR	7.2	6.2	5.2	4.2	3.2	2.2			
ALTITUDE	3370	3050	2730	2410	2100	1780			

GS	kt	80	100	120	140	160	180
4.0 DME SAD-MAPt (2.5)	MIN:SEC	1:53	1:30	1:15	1:04	0:56	0:50
Rate of descent (5.2%)	ft / MIN	420	530	640	740	850	960

Timing not authorized for defining the MAPt.