

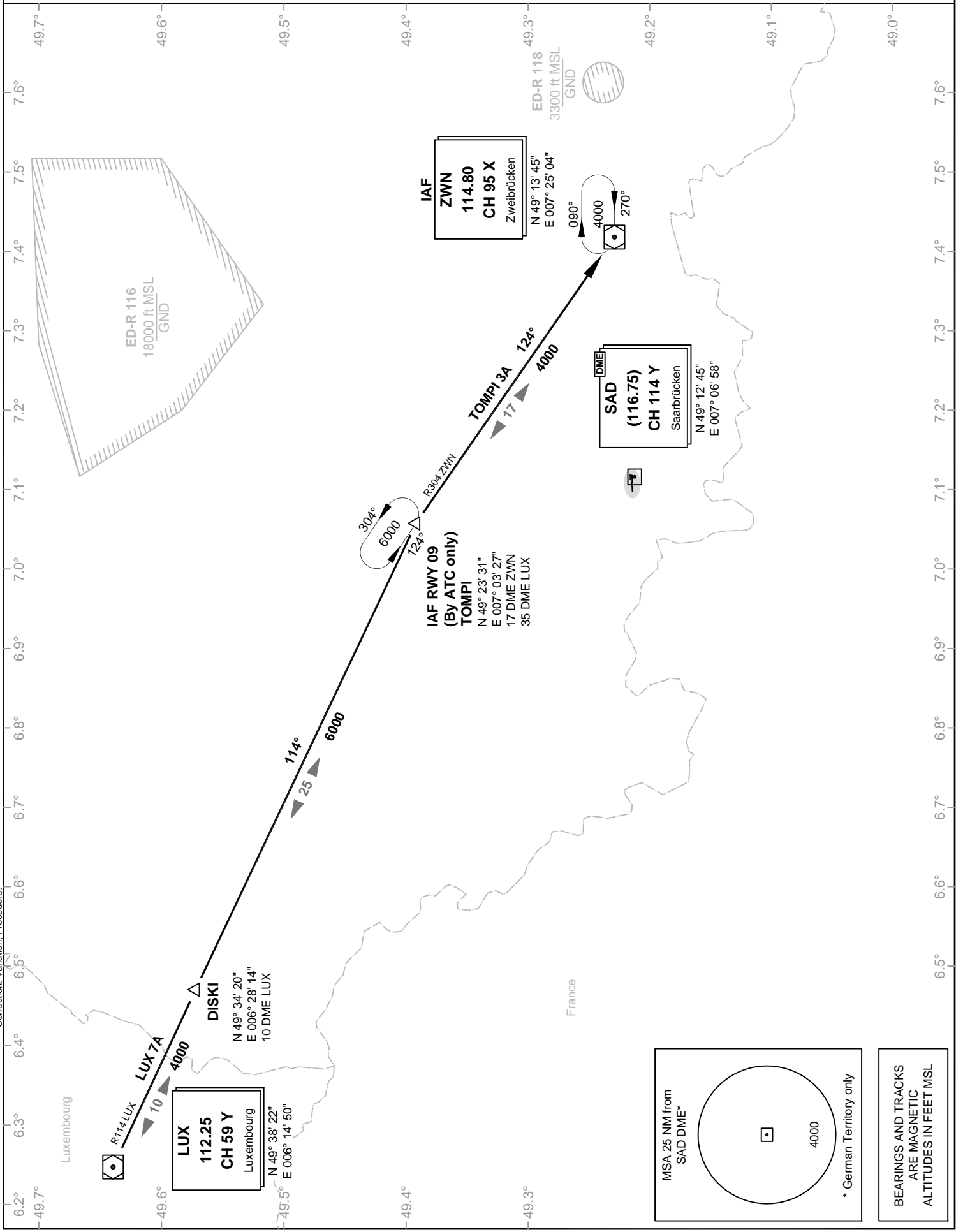
VATSIM Germany Standard Instrument Arrival Chart

SAARBRÜCKEN EDDR STAR RWY 09/27

Transition Altitude: 5000 ft.

ATIS: 125.300
Langen Radar: 129.670
Tower: 118.350
118.550

VAR: 1°E



Correction: Variation, Procedure.

VATSIM Germany
Standard Instrument Arrival Chart
SAARBRÜCKEN
EDDR
STAR
RWY 09/27

Designator	Identification Significant Points	MAG Track	Dist NM	MNM IFR Cruising Level ^f	Remarks
LUX 7A	LUXEMBOURG SEVEN ALPHA				1. Only for departure ELLX. 2. During activity of NLFS, alternative instructions will be given by ATC.
	Δ LUXEMBURG VOR/DME				
	Δ DISKI	114	10	4000	
	Δ TOMPI		25	6000	
	Δ ZWEIBRÜCKEN DVOR/DME	124	17	4000	
TOMPI 3A	TOMPI THREE ALPHA				During activity of NLFS, alternative instructions will be given by ATC.
	Δ TOMPI				
	Δ Zweibrücken DVOR/DME	124	17	4000	