

**IFR PROFILES WITHIN
AIRSPACE CLASS E.
WATCH OUT FOR
VFR TRAFFIC
UNKNOWN TO ATC.**

ZWN, TOMPI
Initial climb altitude:
4000 ft.
Do NOT climb above
initial climb altitude
without ATC clearance

GTQ
Initial climb altitude:
FL80.
Do NOT climb above
initial climb altitude
without ATC clearance

- ① TOMPI N-DEPARTURES:
1500 TURN RIGHT
DIRECT TO DR106
- ② 266°
DER27 - DR101 <- 3.9 >-
DER27 - DR107 <- 4.9 >-

1. RNAV-1 OR RNP-1
OR A-RNP EQUIVALENT
2. GPS REQUIRED
3. DME/DME, DME/DME/IRU
NOT AUTHORIZED

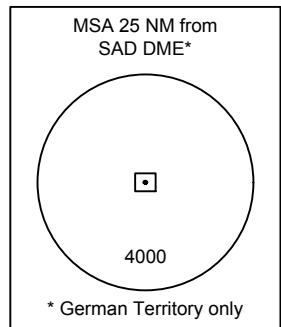
VATSIM Germany
Standard Departure Chart - Instrument RNAV (GPS)
 Transition Altitude: 5000 ft.
 VAR: 2°E

ED-R 118
 3300 ft MSL
 GND



Langen Radar: 129.670
 Tower: 118.350
 ATIS: 125.300
 118.550

SAARBRÜCKEN
EDDR
SID
RWY 27



BEARINGS AND TRACKS
ARE MAGNETIC
ALTITUDES IN FEET MSL

VATSIM Germany
Standard Departure Chart - Instrument

For flight simulator use only. Not to be used for real world flight.

SAARBRÜCKEN
EDDR
SID
RWY 27

Transition Altitude: 5000 ft.
 VAR: 2°E
 ATIS: 125.300
 Langen Radar: 129.670
 Tower: 118.350
 118.550

ED-R 118
 3300 ft MSL
 GND

ZWN
114.80
CH 95 X
 Zweibrücken
 N 49° 13' 45"
 E 007° 25' 04"

SAD
(116.75)
CH 114 Y
 Saarbrücken
 N 49° 12' 45"
 E 007° 06' 58"

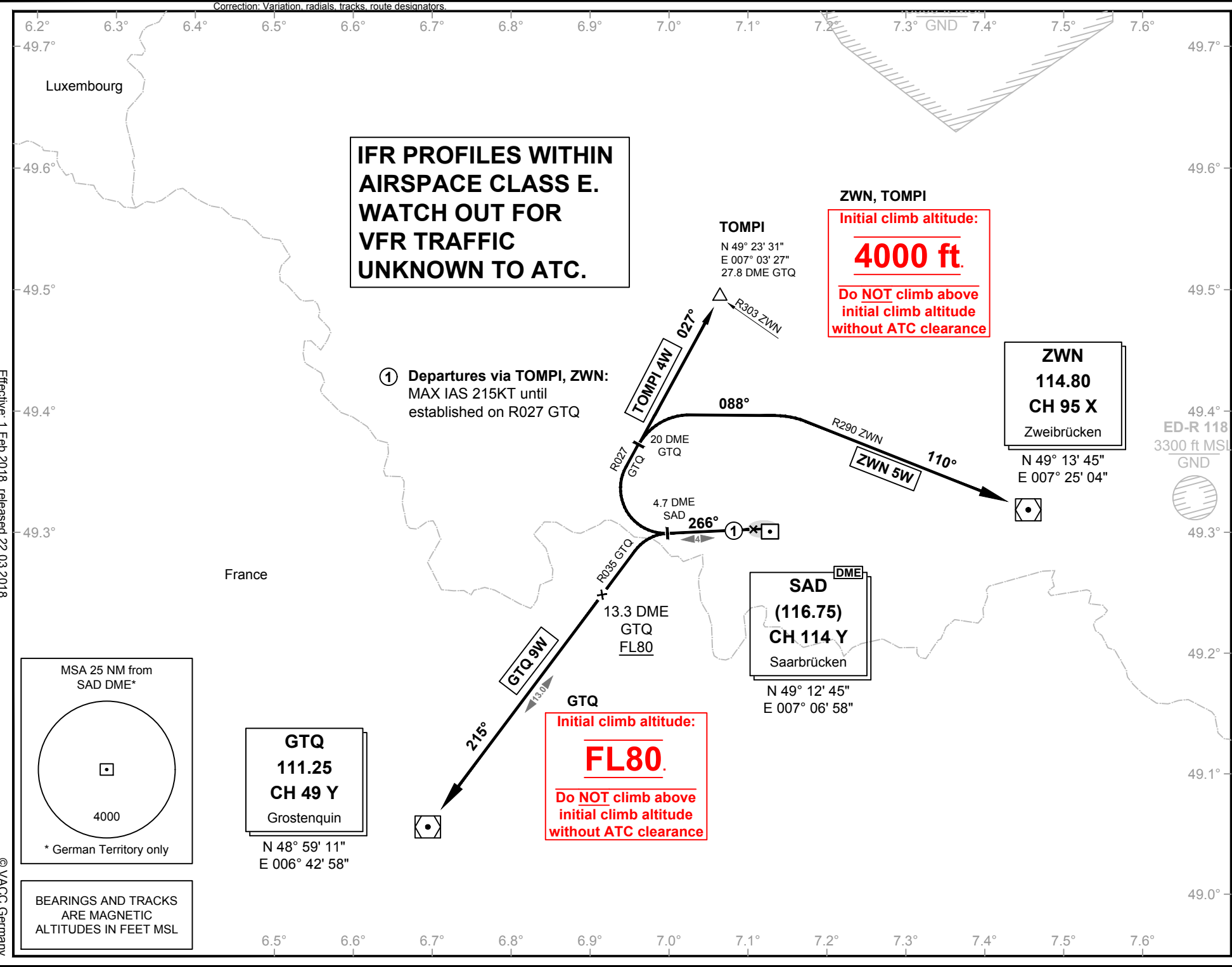
GTQ
111.25
CH 49 Y
 Grostenquin
 N 48° 59' 11"
 E 006° 42' 58"

ZWN, TOMPI
 Initial climb altitude:
4000 ft.
 Do NOT climb above
 initial climb altitude
 without ATC clearance

Initial climb altitude:
FL80.
 Do NOT climb above
 initial climb altitude
 without ATC clearance

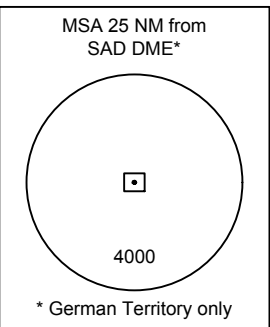
**IFR PROFILES WITHIN
 AIRSPACE CLASS E.
 WATCH OUT FOR
 VFR TRAFFIC
 UNKNOWN TO ATC.**

① Departures via TOMPI, ZWN:
 MAX IAS 215KT until
 established on R027 GTQ



Effective: 1 Feb 2018, released 22.03.2018

© VAACC Germany



BEARINGS AND TRACKS
 ARE MAGNETIC
 ALTITUDES IN FEET MSL

VATSIM Germany
Standard Departure Chart - Instrument
SAARBRÜCKEN
EDDR
SID
RWY 27

Designator	Route	After Take-Off		Remarks
		Climb to	Contact	
GTQ 9W	GROSTENQUIN NINE WHISKEY On Heading 266° to 4.7 DME SAD; LT, on R035 GTQ to GTQ (Δ). Cross 13.3 DME GTQ at FL80 or above.	FL 80	Langen Radar 129.675	PDG 13.7% (835 ft/NM) until passing FL80 due to airspace structure. If unable to comply, inform ATC.
ZWN 5W	ZWEIBRUECKEN FIVE WHISKEY On heading 266° to 4.7 DME SAD; RT, to intercept R027 GTQ; at 20.0 DME GTQ; RT, on heading 088° to intercept R290 ZWN; on R290 to ZWN (Δ). MAX IAS 215 KT until established on R027 GTQ.	4000 ft		1. PDG 3.6% (220 ft/NM) until passing A5000 due to airspace structure. If unable to comply, inform ATC. 2. During activity of NLFS, alternative instructions will be given by ATC.
TOMPI 4W	TOMPI FOUR WHISKEY On heading 266° to 4.7 DME SAD; RT, to intercept R027 GTQ; on R027 GTQ to TOMPI (Δ). MAX IAS 215 KT until established on R027 GTQ.			During activity of NLFS, alternative instructions will be given by ATC.

Contact Langen Radar immediately after take-off!