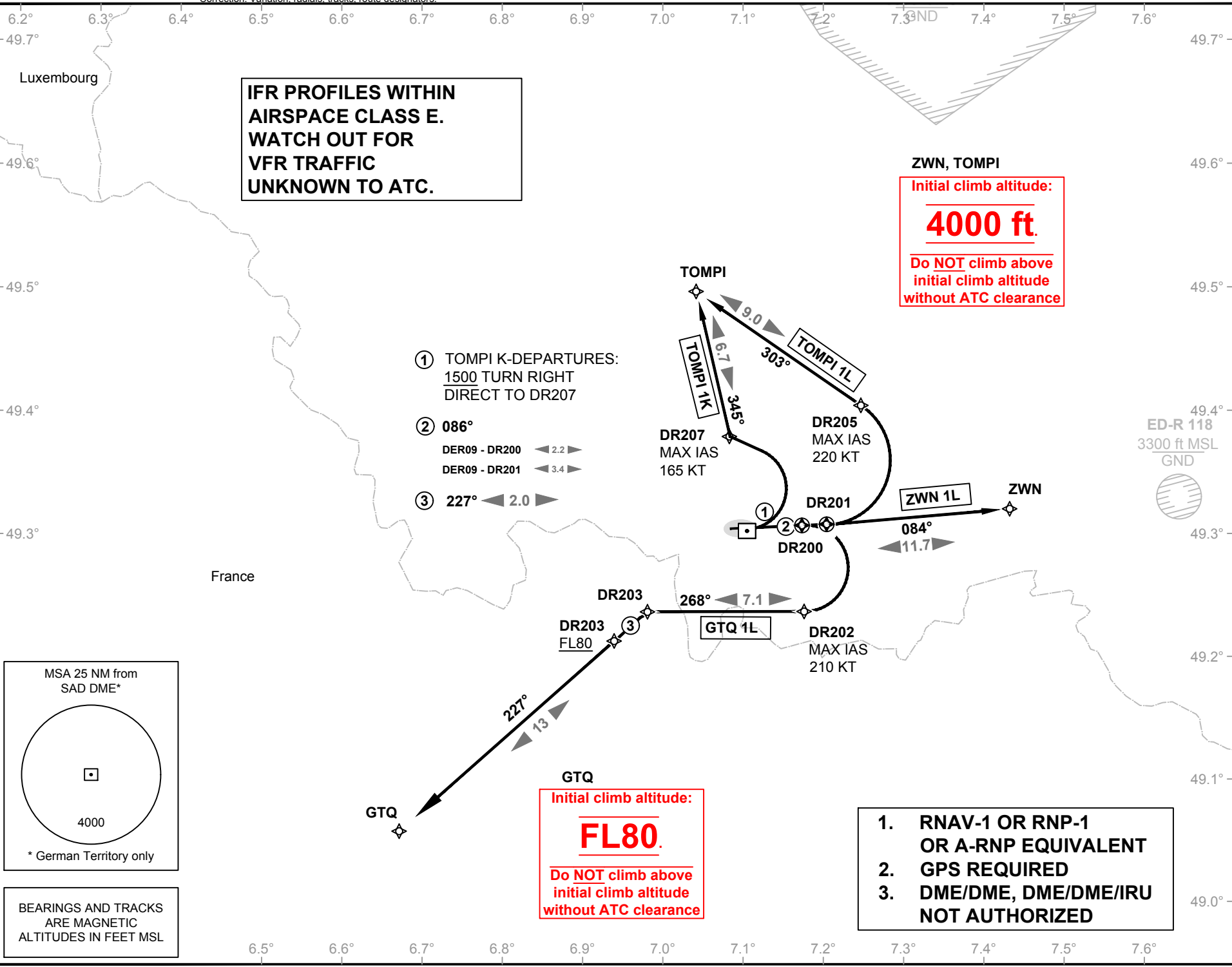


Correction: Variation, radials, tracks, route designators.

**IFR PROFILES WITHIN  
AIRSPACE CLASS E.  
WATCH OUT FOR  
VFR TRAFFIC  
UNKNOWN TO ATC.**

**ZWN, TOMPI**  
Initial climb altitude:  
**4000 ft.**  
Do NOT climb above  
initial climb altitude  
without ATC clearance

- ① TOMPI K-DEPARTURES:  
1500 TURN RIGHT  
DIRECT TO DR207
- ② 086°  
DER09 - DR200 < 2.2 >  
DER09 - DR201 < 3.4 >
- ③ 227° < 2.0 >



**GTQ**  
Initial climb altitude:  
**FL80.**  
Do NOT climb above  
initial climb altitude  
without ATC clearance

- 1. RNAV-1 OR RNP-1  
OR A-RNP EQUIVALENT
- 2. GPS REQUIRED
- 3. DME/DME, DME/DME/IRU  
NOT AUTHORIZED

**VATSIM Germany**  
Standard Departure Chart - Instrument RNAV (GPS)

Transition Altitude: 5000 ft.  
VAR: 2°E

ED-R 118  
3300 ft MSL  
GND

Langen Radar: 129,670  
Tower: 118,350  
118,550

ATIS: 125,300

**SAARBRÜCKEN**  
**EDDR**  
**SID**  
**RWY 09**

Effective: 1 Feb 2018, released 22.03.2018

© VACC Germany

For flight simulator use only. Not to be used for real world flight.

Correction: Variation, radials, tracks, route designators.

# VATSIM Germany Standard Departure Chart - Instrument

For flight simulator use only. Not to be used for real world flight.

## SAARBRÜCKEN

### EDDR

### SID

### RWY 09

Transition Altitude: 5000 ft.  
VAR: 2°E

ATIS: 125.300  
Langen Radar: 129.670  
Tower: 118.350  
118.550

**ED-R 118**  
3300 ft MSL  
GND

**ZWN**  
114.80  
CH 95 X  
Zweibrücken  
N 49° 13' 45"  
E 007° 25' 04"

**ZWN, TOMPI**  
Initial climb altitude:  
**4000 ft.**  
Do NOT climb above  
initial climb altitude  
without ATC clearance

**SR**  
360.00  
Ensheim  
N 49° 13' 04"  
E 007° 13' 10"

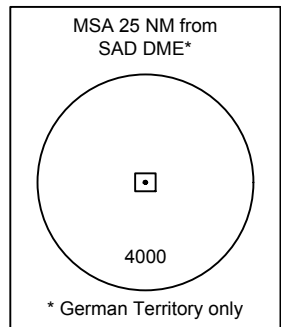
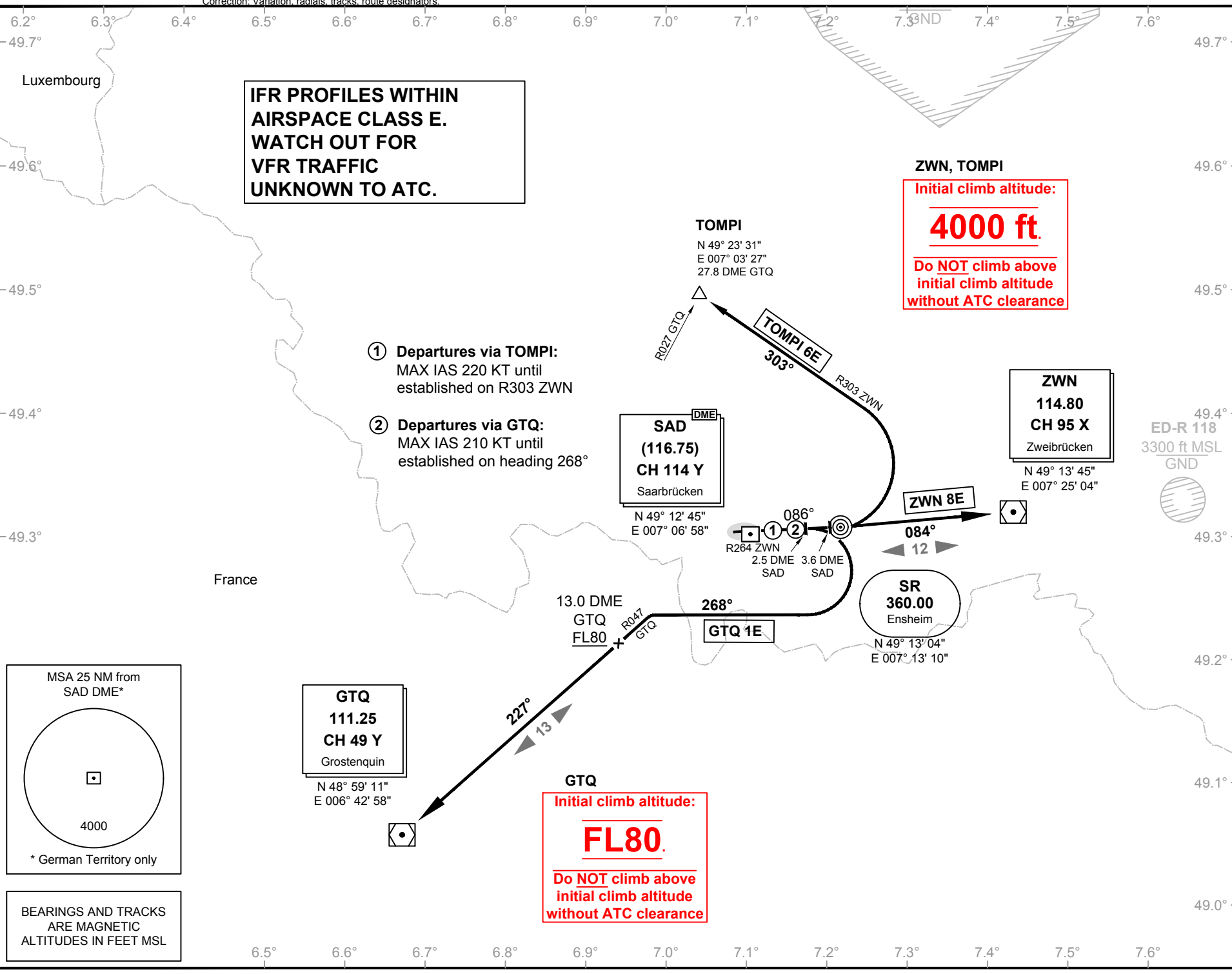
**SAD**<sup>DME</sup>  
(116.75)  
CH 114 Y  
Saarbrücken  
N 49° 12' 45"  
E 007° 06' 58"

**GTQ**  
111.25  
CH 49 Y  
Grostenquin  
N 48° 59' 11"  
E 006° 42' 58"

**GTQ**  
Initial climb altitude:  
**FL80.**  
Do NOT climb above  
initial climb altitude  
without ATC clearance

**IFR PROFILES WITHIN  
AIRSPACE CLASS E.  
WATCH OUT FOR  
VFR TRAFFIC  
UNKNOWN TO ATC.**

- ① Departures via TOMPI:  
MAX IAS 220 KT until  
established on R303 ZWN
- ② Departures via GTQ:  
MAX IAS 210 KT until  
established on heading 268°



BEARINGS AND TRACKS  
ARE MAGNETIC  
ALTITUDES IN FEET MSL

Effective: 1 Feb 2018, released 22.03.2018

© VACC Germany

**VATSIM Germany**  
**Standard Departure Chart - Instrument**
**SAARBRÜCKEN**  
**EDDR**  
**SID**  
**RWY 09**

Designator	Route	After Take-Off		Remarks
		Climb to	Contact	
<b>GTQ 1E</b>	<b>GROSTENQUIN ONE ECHO</b> On course 086 SR to 2.5 DME SAD; RT, on heading 268° to intercept R047 GTQ; R047 GTQ inbound to GTQ (Δ). MAX IAS 210 KT until established on heading 268°. Cross 13.0 DME GTQ at FL 80 or above.	FL 80	Langen Radar 129.675	PDG 6.5% (395 ft/NM) due to airspace structure. If unable to comply, inform ATC.
<b>ZWN 8E</b>	<b>ZWEIBRÜCKEN EIGHT ECHO</b> On R264 ZWN to ZWN (Δ). Climb with 7% (425 ft/NM) until passing 3600.	4000 ft		PDG 7% (425 ft/NM) due to airspace structure. If unable to comply, inform ATC.
<b>TOMPI 6E</b>	<b>TOMPI SIX ECHO</b> On course 086° SR to 3.6 DME SAD; LT, to intercept R303 ZWN to TOMPI (Δ). MAX IAS 220 KT until established on R303 ZWN. Climb with 4% (245 ft/NM) until passing 2300.			1. PDG 6.5% (395 ft/NM) due to airspace structure. If unable to comply, inform ATC. 2. During activity of NLFS, alternative instructions will be given by ATC.

Contact Langen Radar immediately after take-off!