

VATSIM Germany Instrument Approach Chart

**SAARBRÜCKEN
EDDR
RNP
RWY 27**

Elevation: 1058 ft.

ATIS: 125.300
Langen Radar: 129.675
Tower: 118.350
118.550

VAR: 2°E

BEARINGS AND TRACKS ARE MAGNETIC; TRACKS IN BRACKETS ARE TRUE ALTITUDES; ELEVATIONS AND HIGHTS IN ft

BARO-VNAV OPERATIONS NOT AUTHORIZED BELOW -15°C.

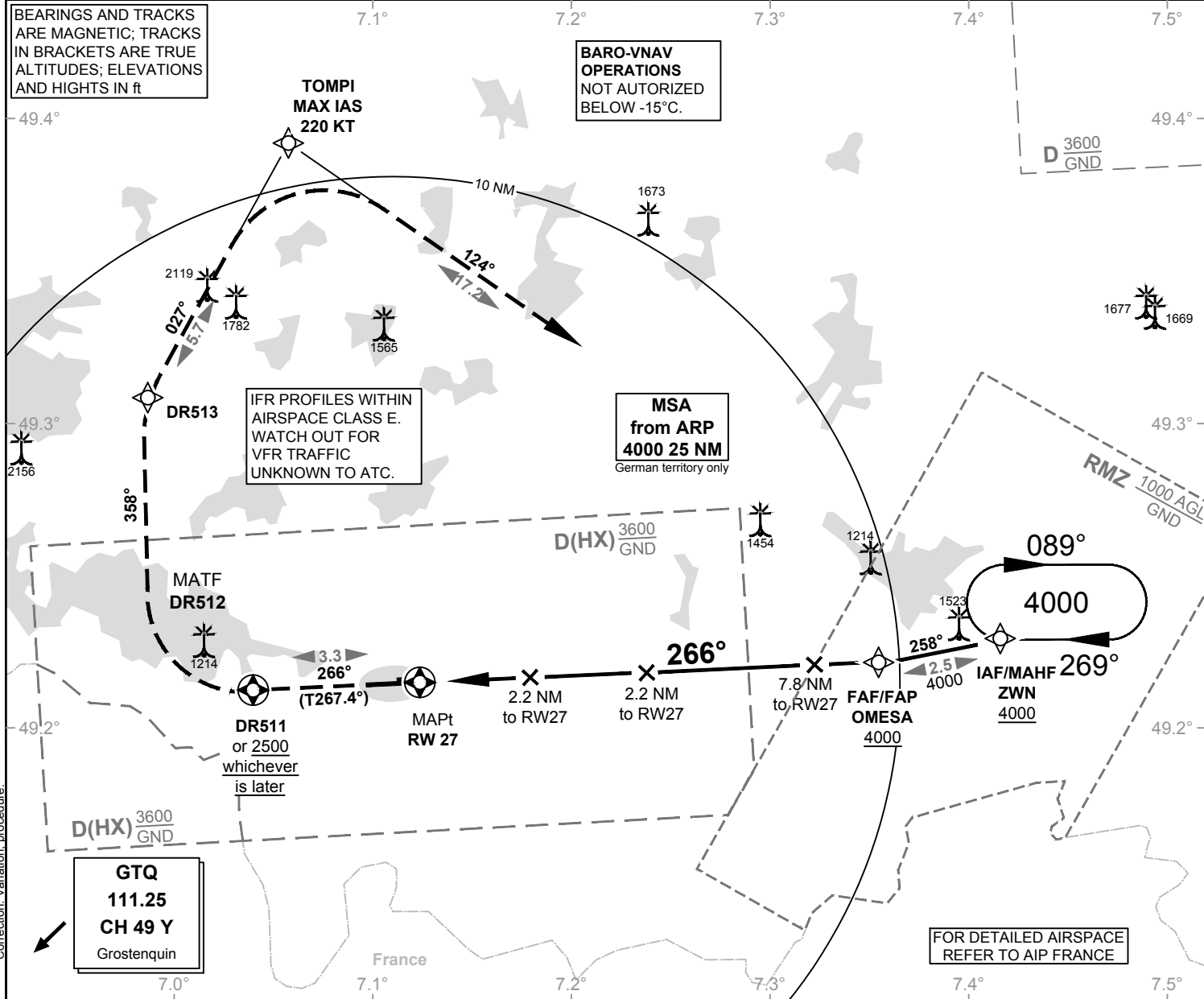
**TOMPI
MAX IAS
220 KT**

IFR PROFILES WITHIN AIRSPACE CLASS E. WATCH OUT FOR VFR TRAFFIC UNKNOWN TO ATC.

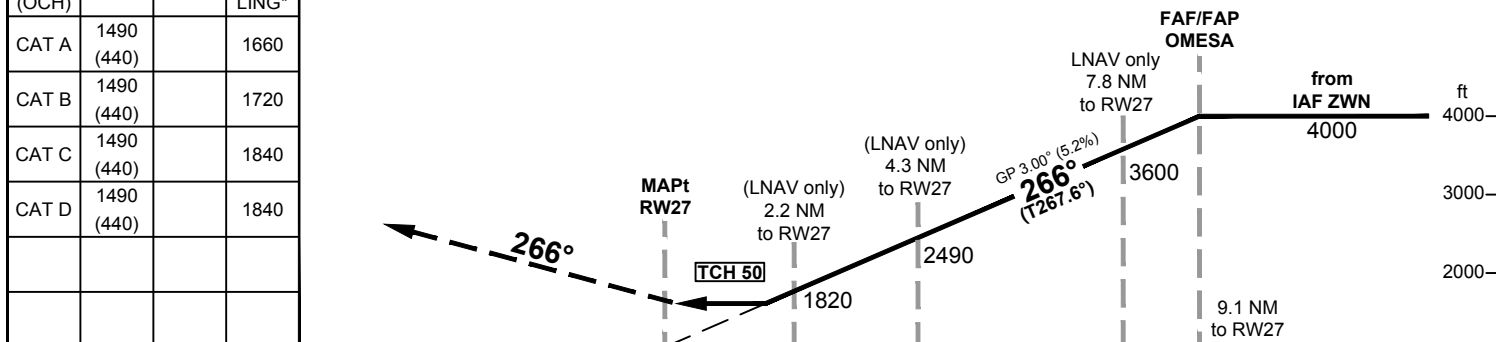
**MSA from ARP
4000 25 NM**
German territory only

**GTQ
111.25
CH 49 Y**
Grostenquin

FOR DETAILED AIRSPACE REFER TO AIP FRANCE



OCA (OCH)	LNAV	CIRCLING*
CAT A	1490 (440)	1660
CAT B	1490 (440)	1720
CAT C	1490 (440)	1840
CAT D	1490 (440)	1840



MISSED APPROACH: RNAV (GPS) Climb on course 266° to DR511 or 2500, whichever is later; RT, on course 358° to DR513; RT, to TOMPI to ZWN climbing to 4000. MAX IAS 220 KT UNTIL TOMPI.

DIST THR / RW27	2	3	4	5	6	7	8	9
ALTITUDE	1750	2070	2380	2700	3020	3340	3660	3980

GS	kt	80	100	120	140	160	180
OMESA - RW27 (9.1 NM)	MIN:SEC	6:50	5:28	4:33	3:54	3:25	3:02
Rate of descent (5.2%)	ft / MIN	420	530	640	740	850	960

Timing not authorized for defining the MAPt.