

# VATSIM Germany Instrument Approach Chart

**SAARBRÜCKEN  
EDDR  
RNP  
RWY 09**

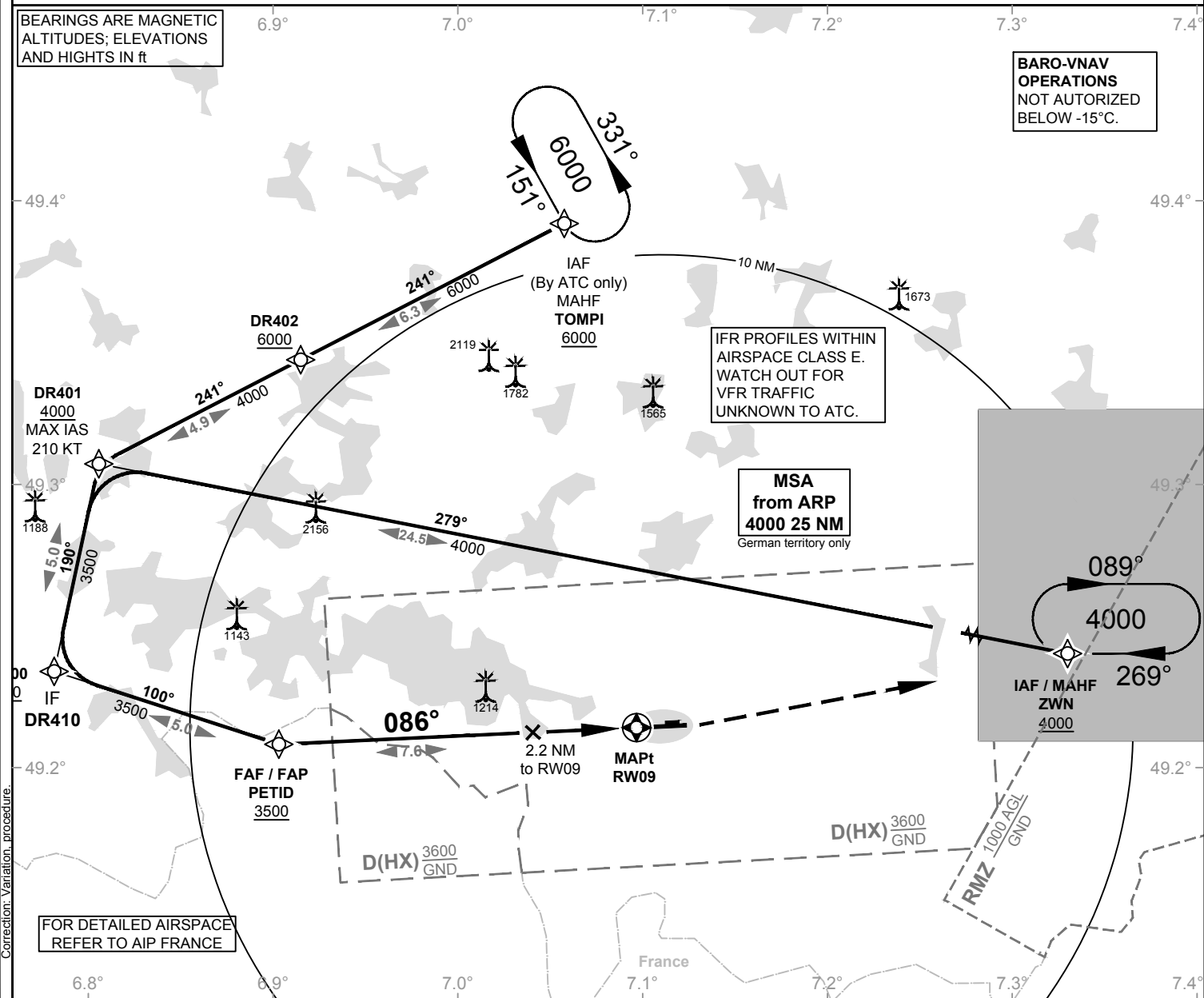
Elevation: 1058 ft.

ATIS: 125.300  
Langen Radar: 129.675  
Tower: 118.350  
118.550

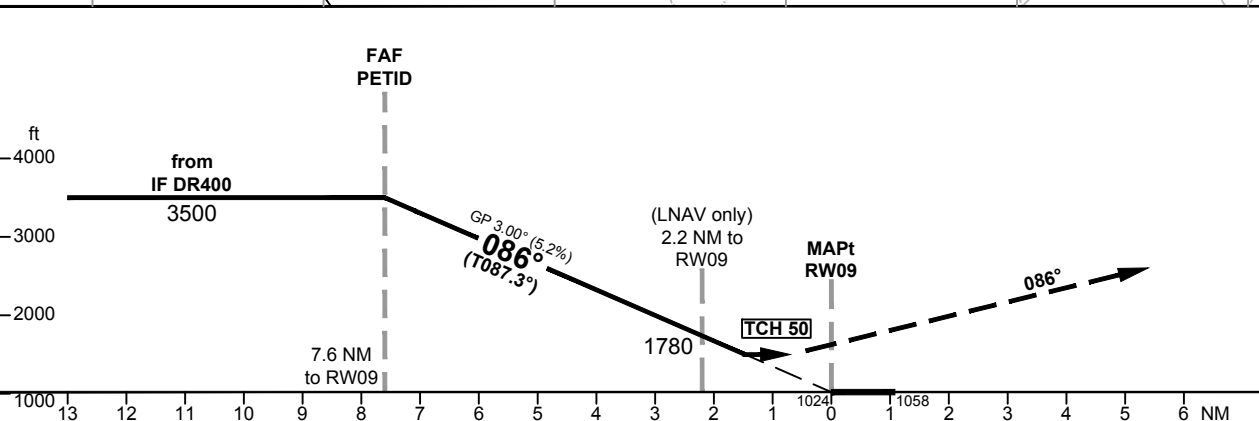
VAR: 2°E

BEARINGS ARE MAGNETIC  
ALTITUDES; ELEVATIONS  
AND HEIGHTS IN ft

BARO-VNAV  
OPERATIONS  
NOT AUTHORIZED  
BELOW -15°C.



Correction: Variation procedure.



OCA (OCH)	LNAV
CAT A	1500 (480)
CAT B	1500 (480)
CAT C	1500 (480)
CAT D	1500 (480)

**MISSED APPROACH:** Climb direct to ZWN. Cross ZWN at 4000. PDG 3.6% (220 FT/NM).

DIST THR / RW09	7	6	5	4	3	2
ALTITUDE	3310	2990	2670	2350	2030	1710

GS	kt	80	100	120	140	160	180
PETID - RW09 (7.6 NM)	MIN:SEC	5:42	4:34	3:48	3:15	2:51	2:32
Rate of descent (5.2%)	ft / MIN	420	530	640	740	850	960

Timing not authorized for defining the MAPt.