

VATSIM Germany Instrument Approach Chart

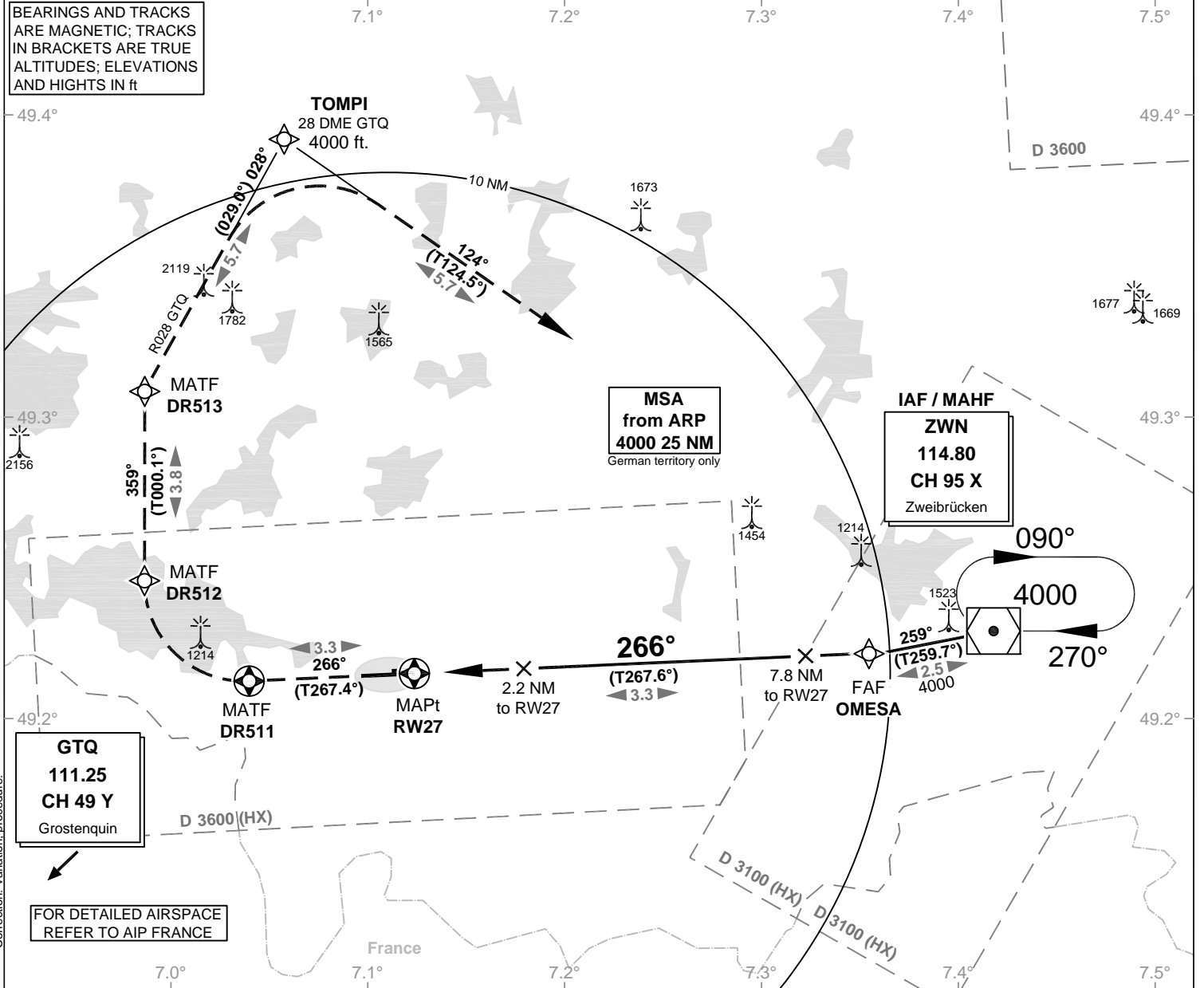
**SAARBRÜCKEN
EDDR
RNAV(GPS)
RWY 27**

Elevation: 1058 ft.

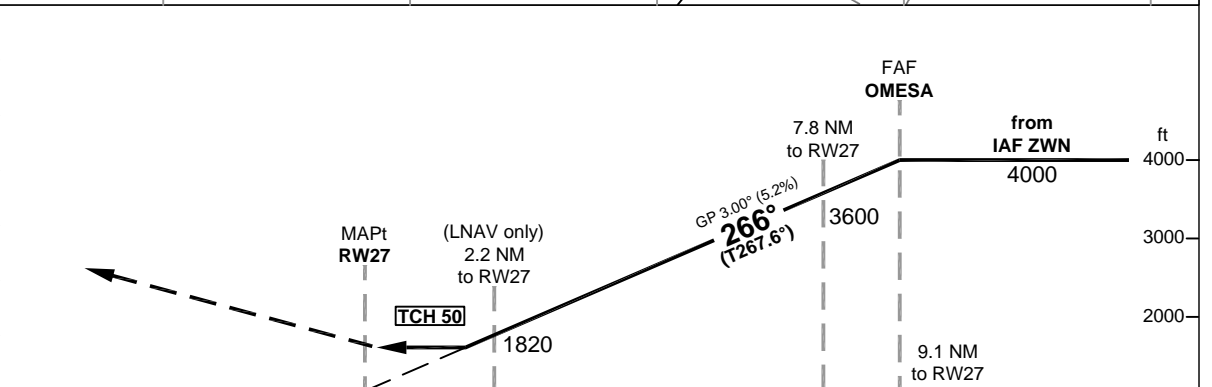
ATIS: 125.300
Langen Radar: 129.670
Tower: 118.350
118.550

VAR: 1°E

BEARINGS AND TRACKS
ARE MAGNETIC; TRACKS
IN BRACKETS ARE TRUE
ALTITUDES; ELEVATIONS
AND HIGHTS IN ft



OCA (OCH)	LNAV	CIRCLING*
CAT A	1490 (440)	1660
CAT B	1490 (440)	1720
CAT C	1490 (440)	1840
CAT D	1490 (440)	1840



*NORTH OF AERODROME ONLY. NM 6 5 4 3 2 1 0 1022 1056 1 2 3 4 5 6 7 8 9 10 11 12 13 1000

MISSED APPROACH: RNAV (GPS) Climb on track 266° to DR511 or 2500, whichever is later; RT, via DR512 on track 359° to DR513; RT, on track 028° to TOMPI climbing to 4000; RT on track 124° to ZWN.
DR511 - [A2500; R] - DR512 - DR513[R] - TOMPI[A4000; R] - ZWN

DIST THR / RW27	2	3	4	5	6	7	8	9
ALTITUDE	1750	2070	2380	2700	3020	3340	3660	3980

GS	kt	80	100	120	140	160	180
OMESA - RW27 (9.1 NM)	MIN:SEC	6:50	5:28	4:33	3:54	3:25	3:02
Rate of descent (5.2%)	ft / MIN	420	530	640	740	850	960

Timing not authorized for defining the MAPt.