

VATSIM Germany Instrument Approach Chart

**SAARBRÜCKEN
EDDR
NDB
RWY 27**

Elevation: 1058 ft.

ATIS: 125.300
Langen Radar: 129.675
Tower: 118.350
118.550

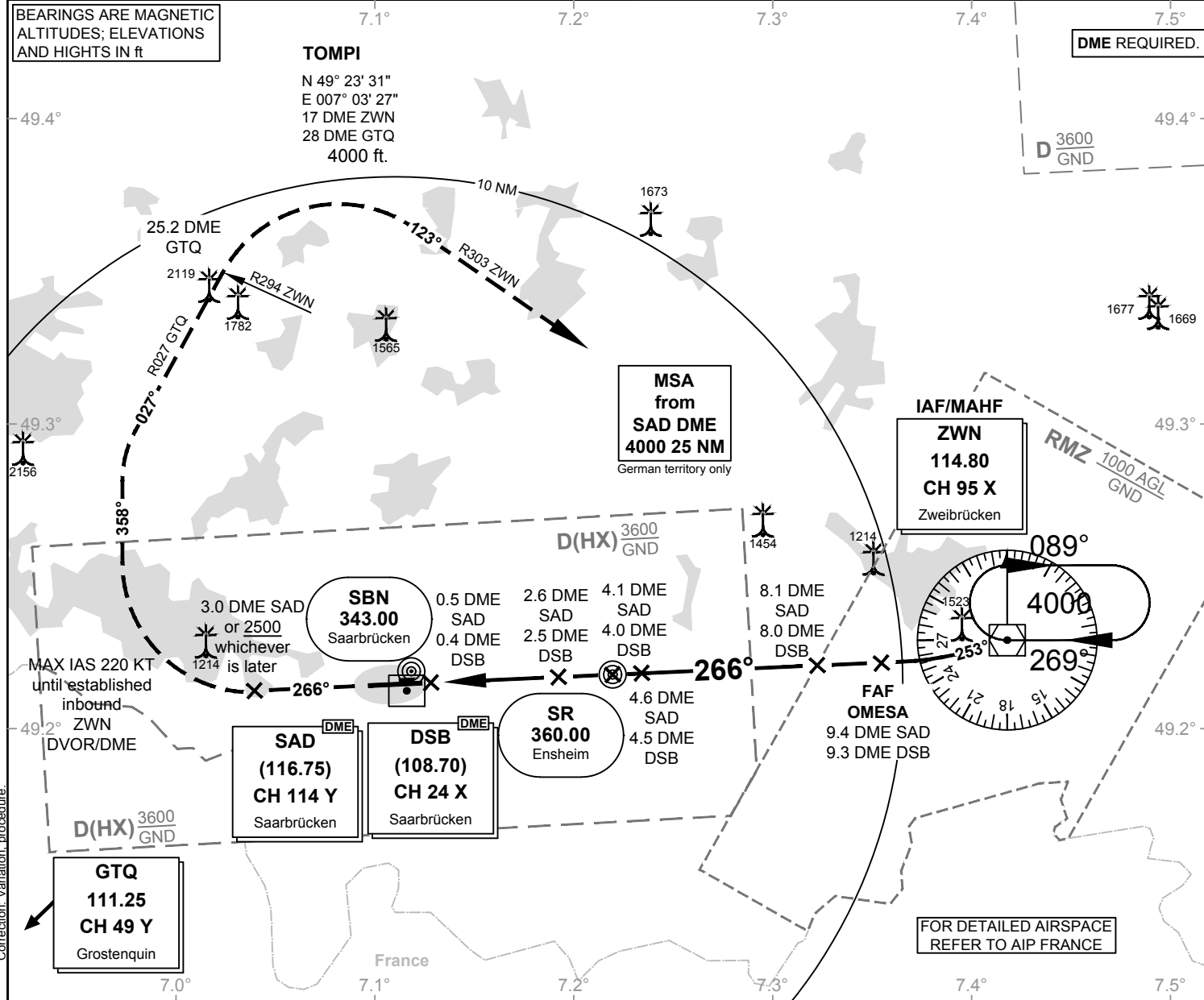
VAR: 2°E

BEARINGS ARE MAGNETIC
ALTITUDES; ELEVATIONS
AND HEIGHTS IN ft

DME REQUIRED.

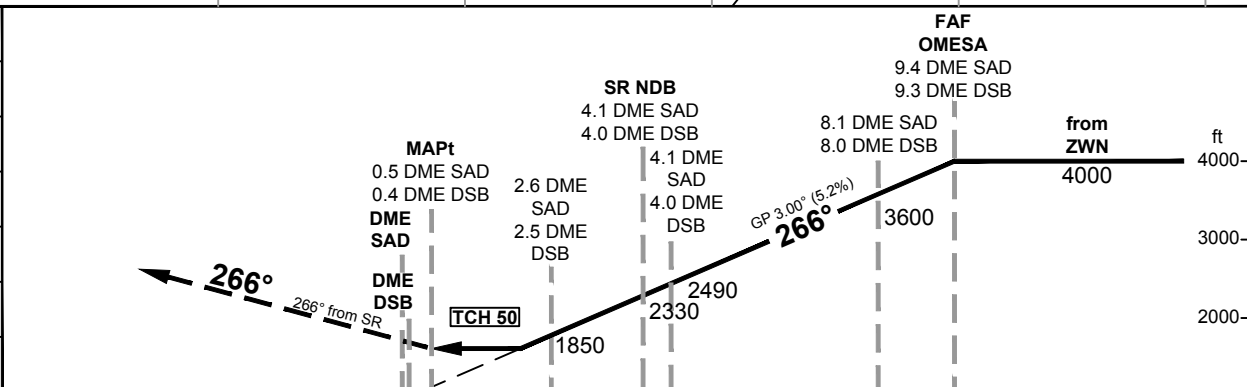
TOMPI

N 49° 23' 31"
E 007° 03' 27"
17 DME ZWN
28 DME GTQ
4000 ft.



Correction: Variation, procedure.

| OCA (OCH) | NDB-DME | CIRCLING* |
|-----------|------------|-----------|
| CAT A | 1610 (550) | 1660 |
| CAT B | 1610 (550) | 1720 |
| CAT C | 1610 (550) | 1840 |
| CAT D | 1610 (550) | 1840 |



*NORTH OF AERODROME ONLY.

MISSED APPROACH:

Climb on course 266° from SR NDB to 3.0 DME SAD or 2500, whichever is later; RT, on heading 358° to intercept R027 GTQ to 25.2 DME GTQ (crossing R294 ZWN); RT; to intercept R303 ZWN; on R303 ZWN to ZWN DVOR/DME climbing 4000. MAX IAS 220 KT until established inbound ZWN DVOR/DME.

| DME SAD | 2 | 3 | 4 | 5 | 6 | 7 | 8 | 9 |
|----------|------|------|------|------|------|------|------|------|
| DME THR | 1.7 | 2.7 | 3.7 | 4.7 | 5.7 | 6.7 | 7.7 | 8.7 |
| ALTITUDE | 1650 | 1970 | 2290 | 2610 | 2930 | 3240 | 3560 | 3880 |

| GS | kt | 80 | 100 | 120 | 140 | 160 | 180 |
|------------------------|----------|------|------|------|------|------|------|
| SR - MAPt (3.6 NM) | MIN:SEC | 2:42 | 2:10 | 1:48 | 1:33 | 1:21 | 1:12 |
| Rate of descent (5.2%) | ft / MIN | 420 | 530 | 640 | 740 | 850 | 960 |

Timing not authorized for defining the MAPt.