

VATSIM Germany Instrument Approach Chart

**SAARBRÜCKEN
EDDR**
**ILS or LOC
RWY 27**

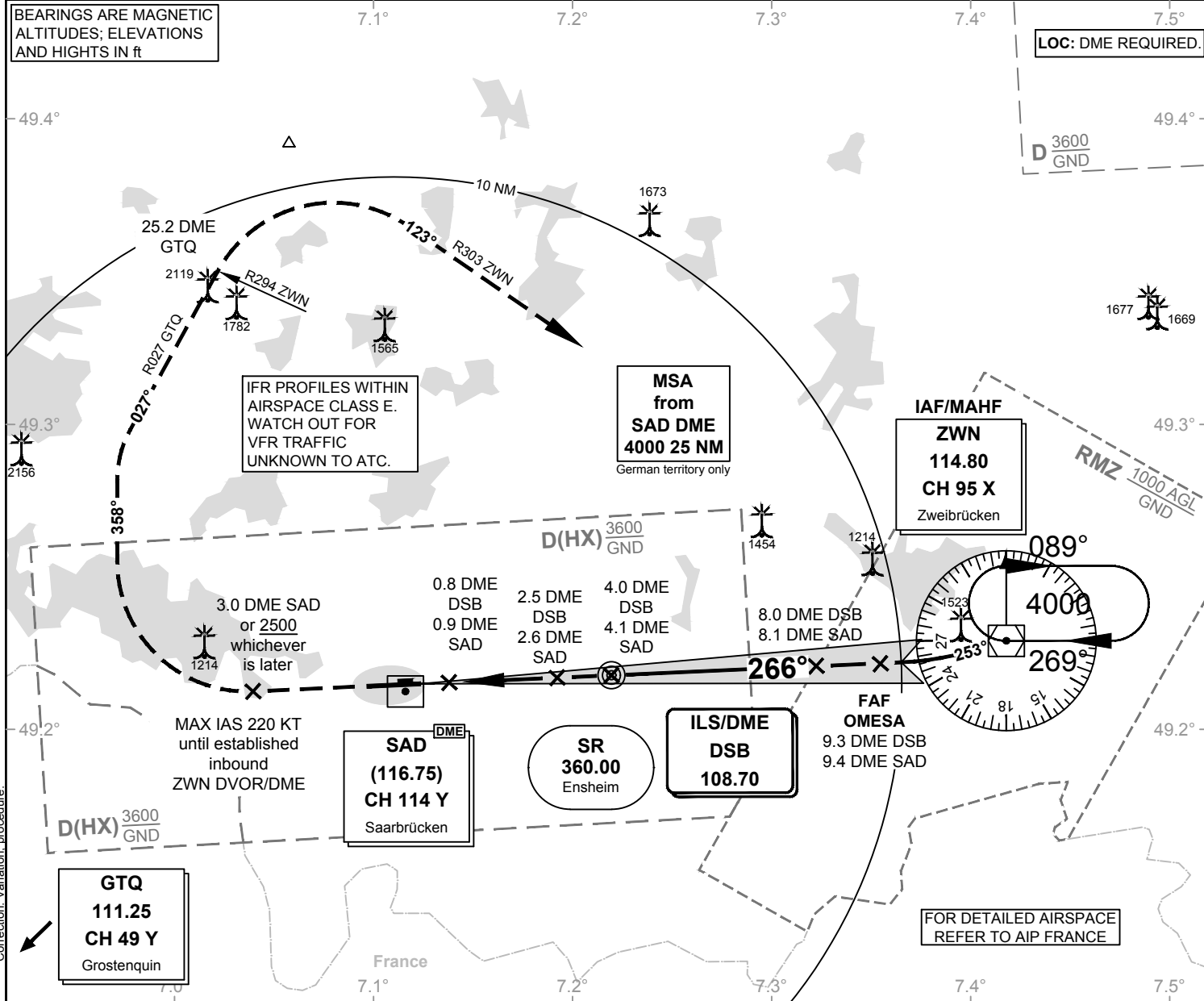
Elevation: 1058 ft.

ATIS: 125.300
Langen Radar: 129.675
Tower: 118.350
118.550

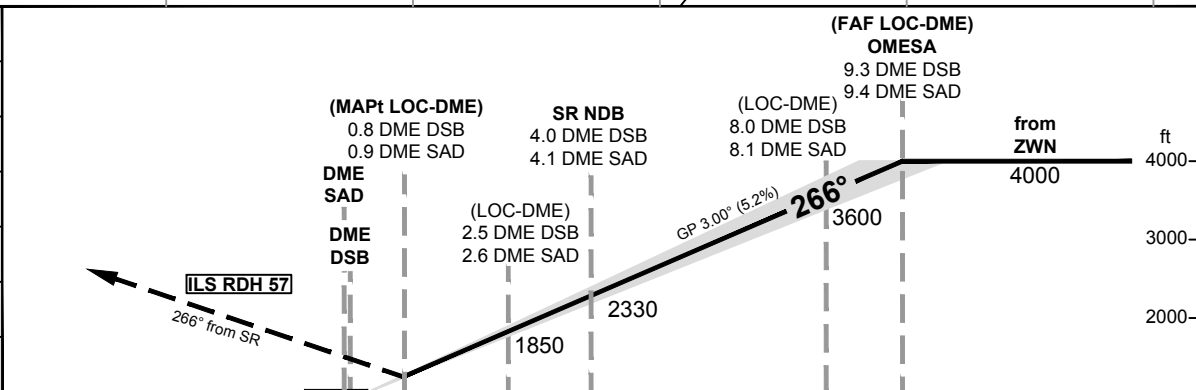
VAR: 2°E

BEARINGS ARE MAGNETIC
ALTITUDES; ELEVATIONS
AND HEIGHTS IN ft

LOC: DME REQUIRED.



OCA (OCH)	ILS CAT I	LOC DME	CIRCLING*
CAT A	1209 (153)	1490 (440)	1660
CAT B	1219 (163)	1490 (440)	1720
CAT C	1229 (173)	1490 (440)	1840
CAT D	1239 (183)	1490 (440)	1840



MISSED APPROACH:

Climb on course 266° from SR NDB to 3.0 DME SAD or 2500, whichever is later; RT, on heading 358° to intercept R027 GTQ to 25.2 DME GTQ (crossing R294 ZWN); RT; to intercept R303 ZWN; on R303 ZWN to ZWN DVOR/DME climbing 4000. MAX IAS 220 KT until established inbound ZWN DVOR/DME.

DME DSB	2	3	4	5	6	7	8	9	
DME THR	1.8	2.8	3.8	4.8	5.8	6.8	7.8	8.8	
ALTITUDE	1690	2010	2330	2650	2970	3290	3600	3920	

GS	kt	80	100	120	140	160	180
OM - THR (3.8 NM)	MIN:SEC	2:51	2:17	1:54	1:38	1:26	1:16
Rate of descent (5.2%)	ft / MIN	420	530	640	740	850	960

LOC-DME: Timing not authorized for defining the MAPt.