

VATSIM Germany Instrument Approach Chart



DÜSSELDORF EDDL

VOR RWY 23L

Elevation: THR23L 138 ft.

ATIS 123.775
Langen Radar 128.550
Director 128.650

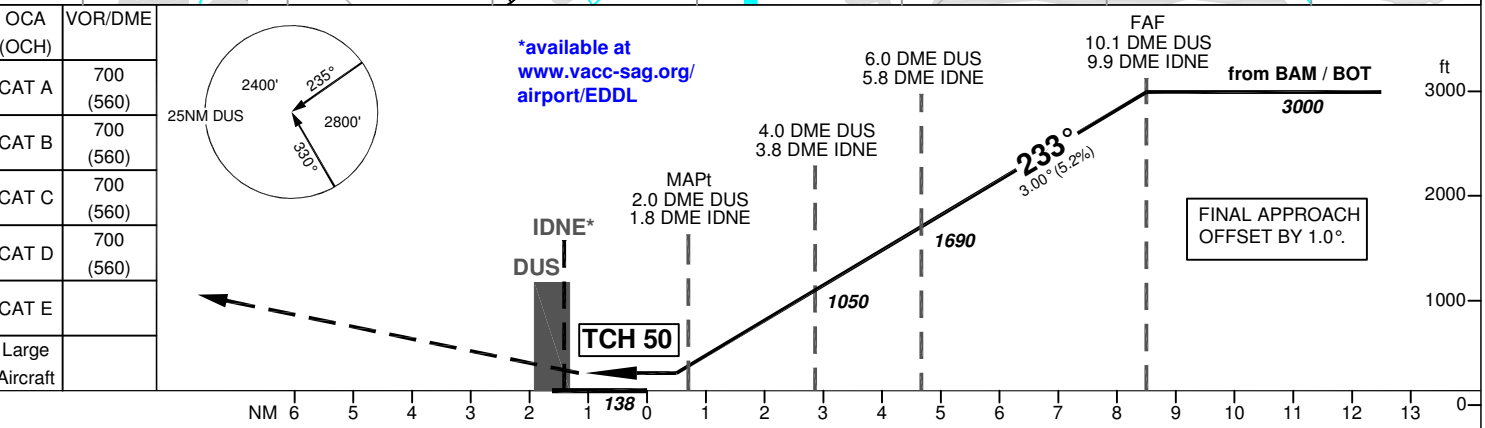
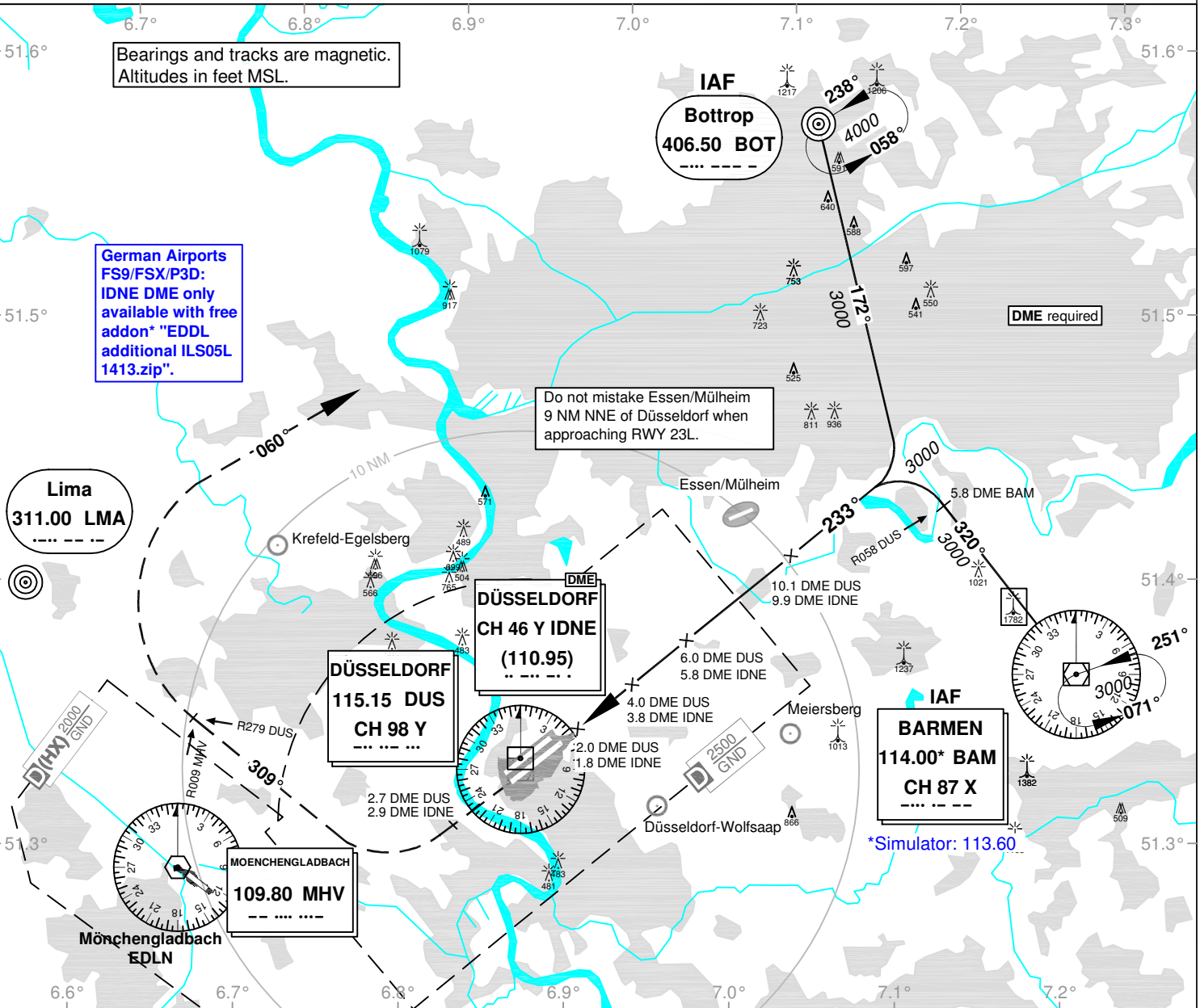
Tower 118.300
Ground (West) 121.900
Ground (East) 121.600

VAR: 1°E

Bearings and tracks are magnetic.
Altitudes in feet MSL.

German Airports
FS9/FSX/P3D:
IDNE DME only
available with free
addon* "EDDL
additional ILS05L
1413.zip".

Do not mistake Essen/Mülheim
9 NM NNE of Düsseldorf when
approaching RWY 23L.



MISSED APPROACH: Climb straight ahead to 2.7 DME DUS / 2.9 DME IDNE; RT on track 309° inbd LMA until crossing R009 MHV / R279 DUS; RT on track 060° outbd LMA to BOT climbing to 4000.

DME DUS	3	4	5	6	7	8	9	10	GS	kt	80	100	120	140	160	180
DME THR	1.7	2.7	3.7	4.7	5.7	6.7	7.7	8.7	6.0 DME DUS/5.8 DME IDNE - MAPt (4.0 NM)	MIN:SEC	3:00	2:24	2:00	1:43	1:30	1:20
ALTITUDE	730	1050	1370	1690	2010	2330	2650	2960	Rate of descent (5.2%)	ft / MIN	420	530	640	740	850	960

Timing not authorized for defining the MAPt.