

VATSIM Germany GPS / FMS RNAV Arrival Chart



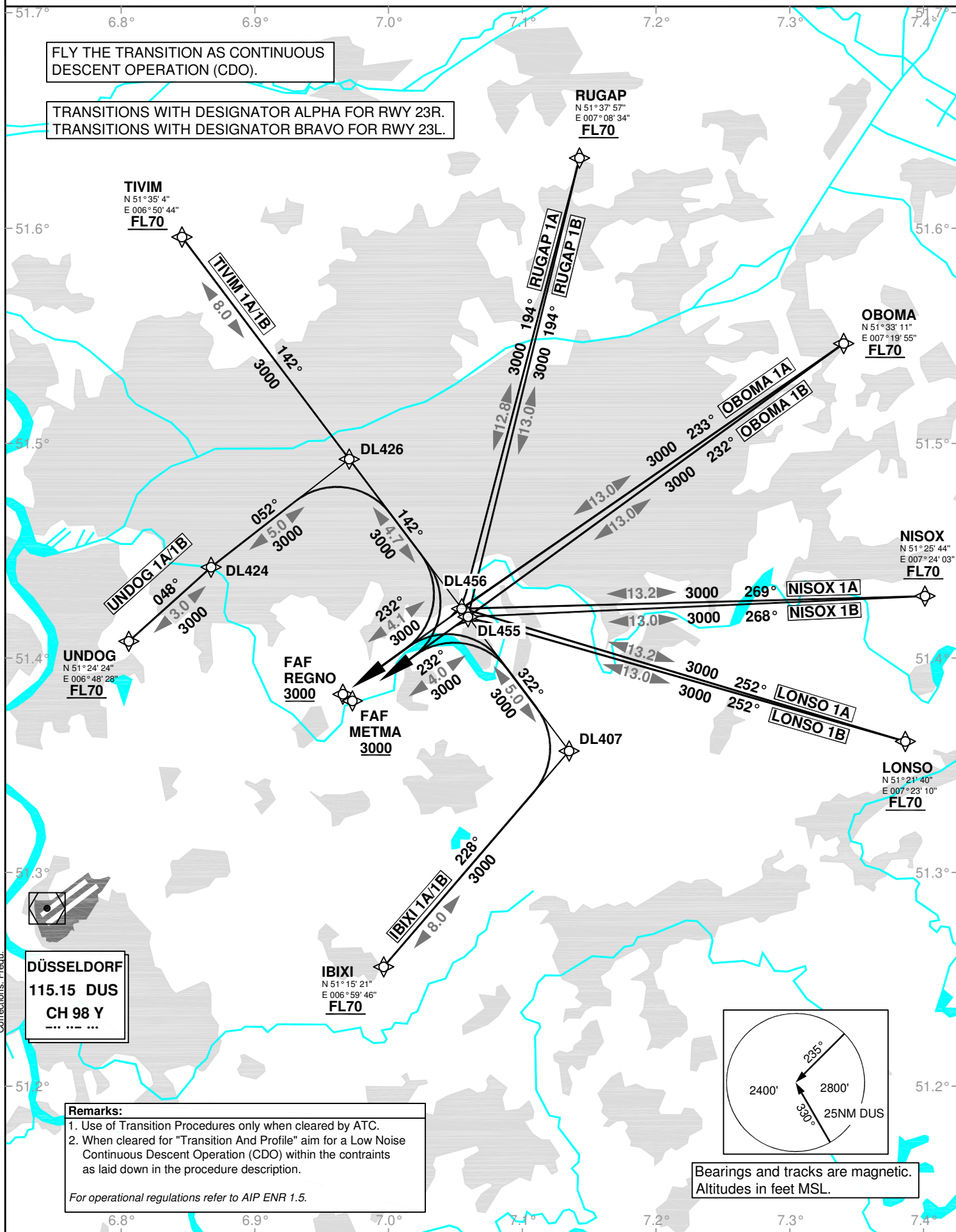
DÜSSELDORF EDDL

Transition Altitude: 5000 ft ATIS 123.770 Director 128.650
 Langen Radar 128.550, 128.500 Tower 118.300
 VAR: 1°E 121.350 Ground 121.900, 121.600

Transition to Final Approach (CDO) RWY 23L/R

FLY THE TRANSITION AS CONTINUOUS
DESCENT OPERATION (CDO).

TRANSITIONS WITH DESIGNATOR ALPHA FOR RWY 23R.
TRANSITIONS WITH DESIGNATOR BRAVO FOR RWY 23L.



DÜSSELDORF
115.15 DUS
CH 98 Y
 --- ··· ···

Remarks:
 1. Use of Transition Procedures only when cleared by ATC.
 2. When cleared for "Transition And Profile" aim for a Low Noise Continuous Descent Operation (CDO) within the constraints as laid down in the procedure description.
 For operational regulations refer to AIP ENR 1.5.

Bearings and tracks are magnetic.
Altitudes in feet MSL.