

VATSIM Germany GPS / FMS RNAV Arrival Chart



DÜSSELDORF EDDL

Transition Altitude: 5000 ft

ATIS 123.770
Langen Radar 128.550, 128.50
121.350

Director 128.650
Tower 118.300
Ground 121.900, 121.600

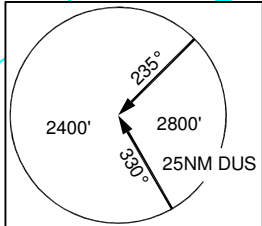
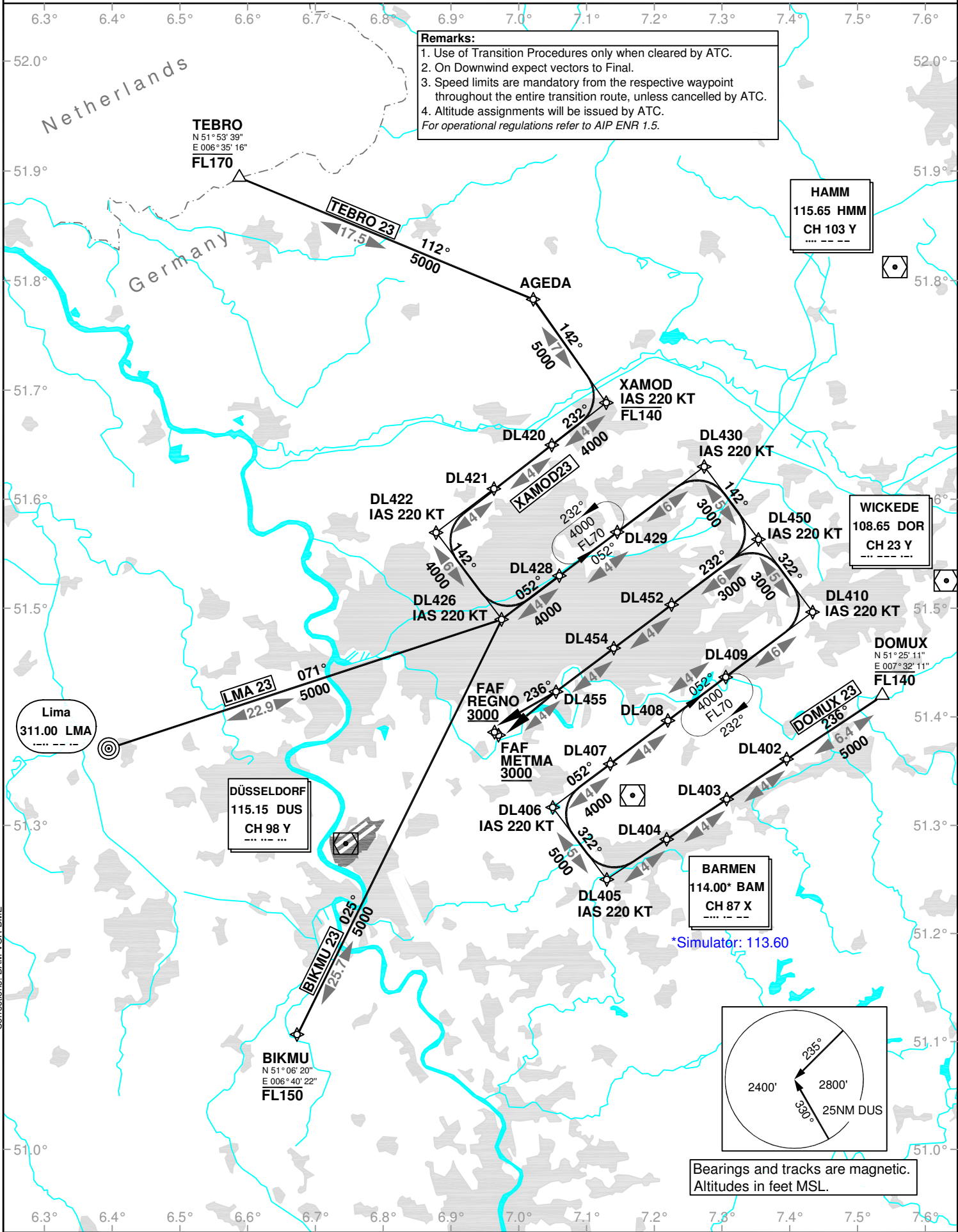
Transition to Final Approach RWY 23L/R

VAR: 1°E

Remarks:

1. Use of Transition Procedures only when cleared by ATC.
2. On Downwind expect vectors to Final.
3. Speed limits are mandatory from the respective waypoint throughout the entire transition route, unless cancelled by ATC.
4. Altitude assignments will be issued by ATC.

For operational regulations refer to AIP ENR 1.5.



Bearings and tracks are magnetic.
Altitudes in feet MSL.

Corrections: BAM, VOR-DME