

# VATSIM Germany Standard Instrument Arrival Chart



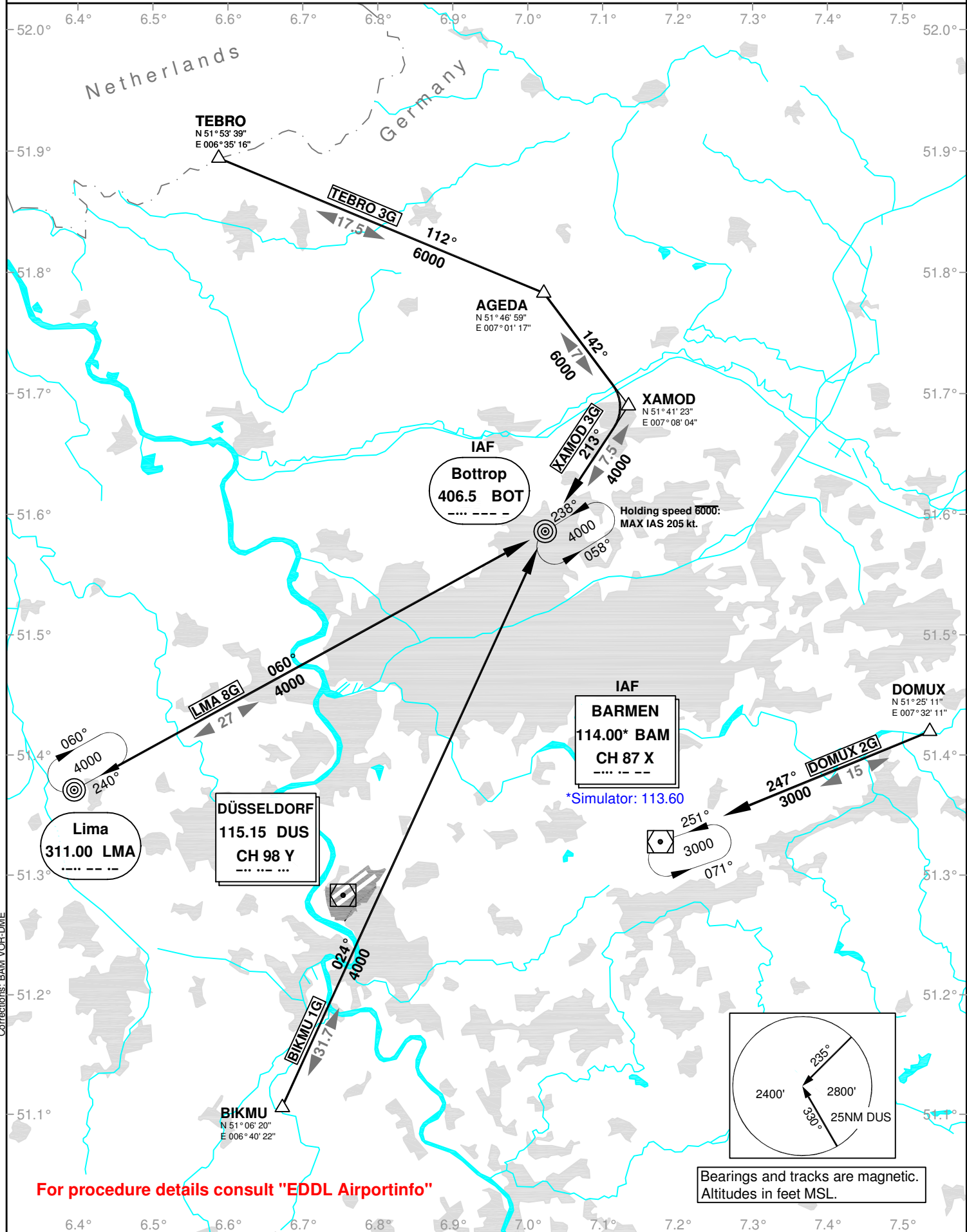
**DÜSSELDORF**  
**EDDL**  
**STAR**  
**RWY 23L/R**

Transition Altitude: 5000 ft

ATIS 123.770  
Langen Radar 128.550, 128.500  
121.350

Director 128.650  
Tower 118.300  
Ground 121.900, 121.600

VAR: 1°E



For procedure details consult "EDDL Airportinfo"

Bearings and tracks are magnetic.  
Altitudes in feet MSL.