

VATSIM Germany Standard Instrument Arrival Chart



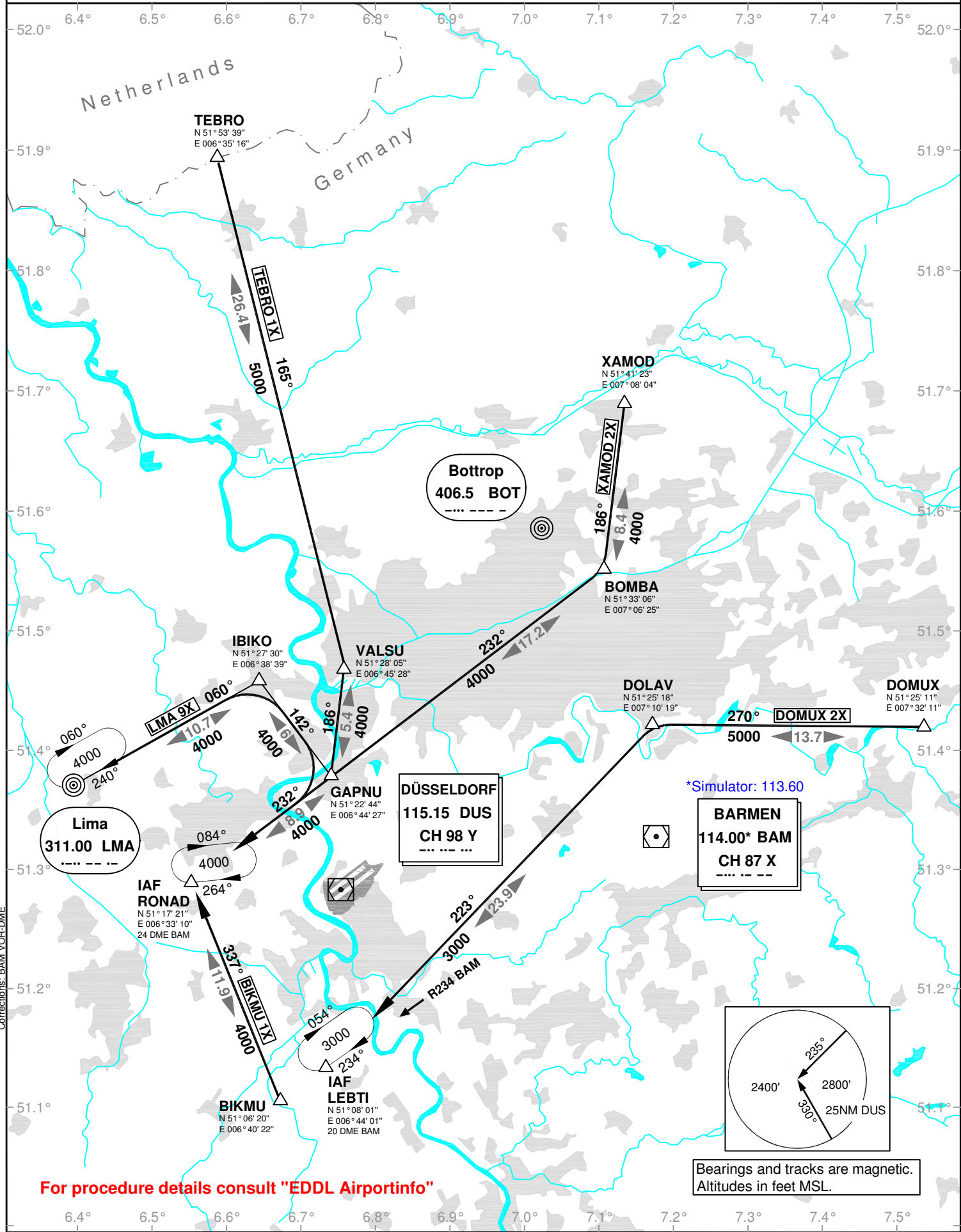
DÜSSELDORF
EDDL
STAR
RWY 05L/R

Transition Altitude: 5000 ft

ATIS 123.770
Langen Radar 128.550, 128.500
121.350

Director 128.650
Tower 118.300
Ground 121.900, 121.600

VAR: 1°E



For procedure details consult "EDDL Airportinfo"

Bearings and tracks are magnetic.
Altitudes in feet MSL.