

VATSIM Germany Standard Instrument Departure Chart



DÜSSELDORF EDDL

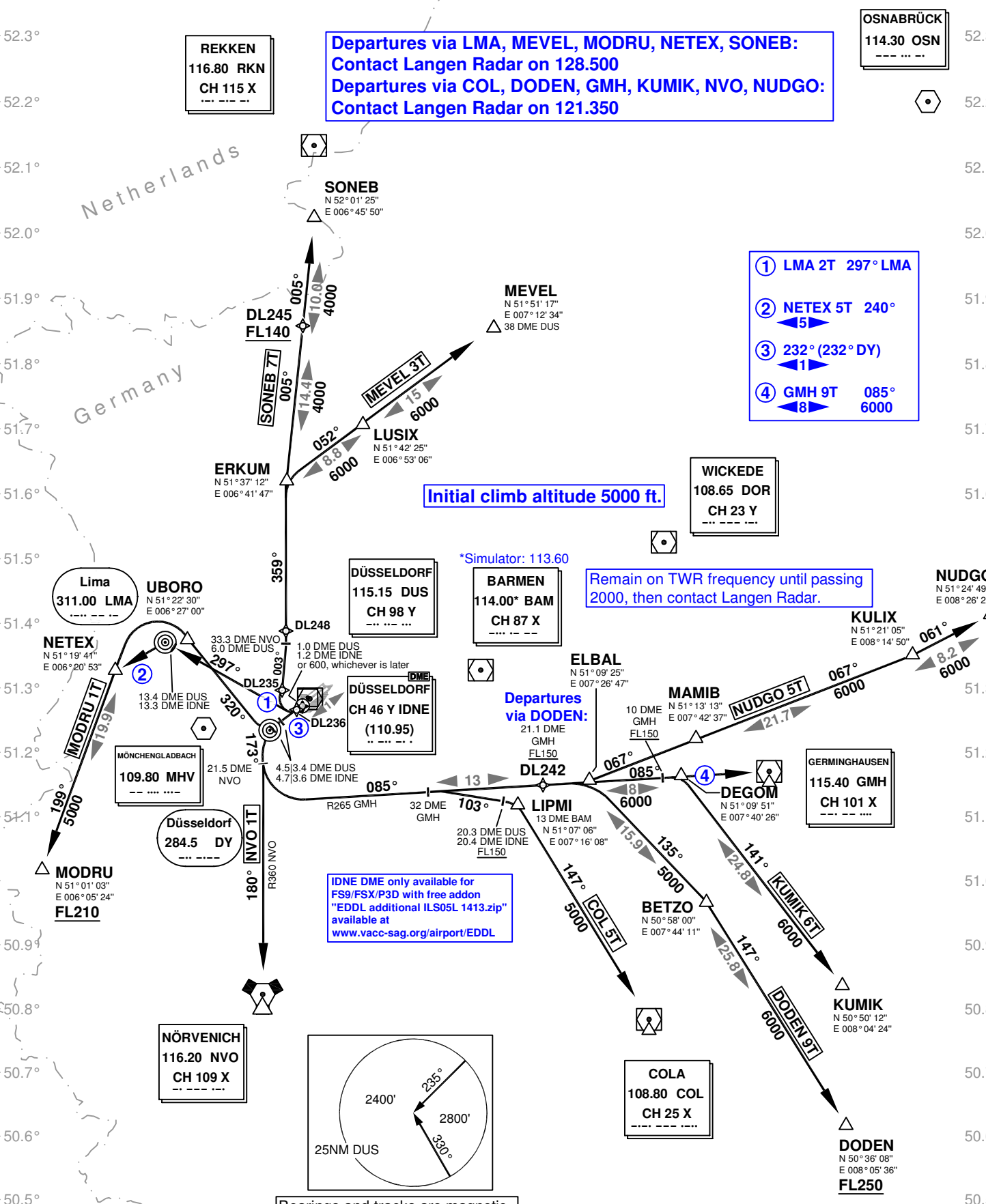
Transition Altitude: 5000 ft.

ATIS 123.770
Delivery 121.770
Ground 121.900

Tower 118.300
Langen Radar 121.350
128.500

SID RWY 23L

52.46.1° 6.2° 6.3° 6.4° 6.5° 6.6° 6.7° 6.8° 6.9° 7.0° 7.1° 7.2° 7.3° 7.4° 7.5° 7.6° 7.7° 7.8° 7.9° 8.0° 8.1° 8.2° 8.3° 8.4°



**Departures via LMA, MEVEL, MODRU, NETEX, SONEB:
Contact Langen Radar on 128.500**
**Departures via COL, DODEN, GMH, KUMIK, NVO, NUDGO:
Contact Langen Radar on 121.350**

- ① LMA 2T 297° LMA
- ② NETEX 5T 240°
- ③ 232° (232° DY)
- ④ GMH 9T 085° 6000

Initial climb altitude 5000 ft.

Remain on TWR frequency until passing 2000, then contact Langen Radar.

IDNE DME only available for FS9/FSX/P3D with free add-on "EDDL additional ILS05L 1413.zip" available at www.vacc-sag.org/airport/EDDL

Bearings and tracks are magnetic.
Altitudes in feet MSL.

For procedure details consult "EDDL Airportinfo"

Corrections: BAM VOR-DME, Procedures