

# VATSIM Germany Standard Instrument Departure Chart



## DÜSSELDORF EDDL

Transition Altitude: 5000 ft.

ATIS 123.770

Tower 118.300

Delivery 121.770

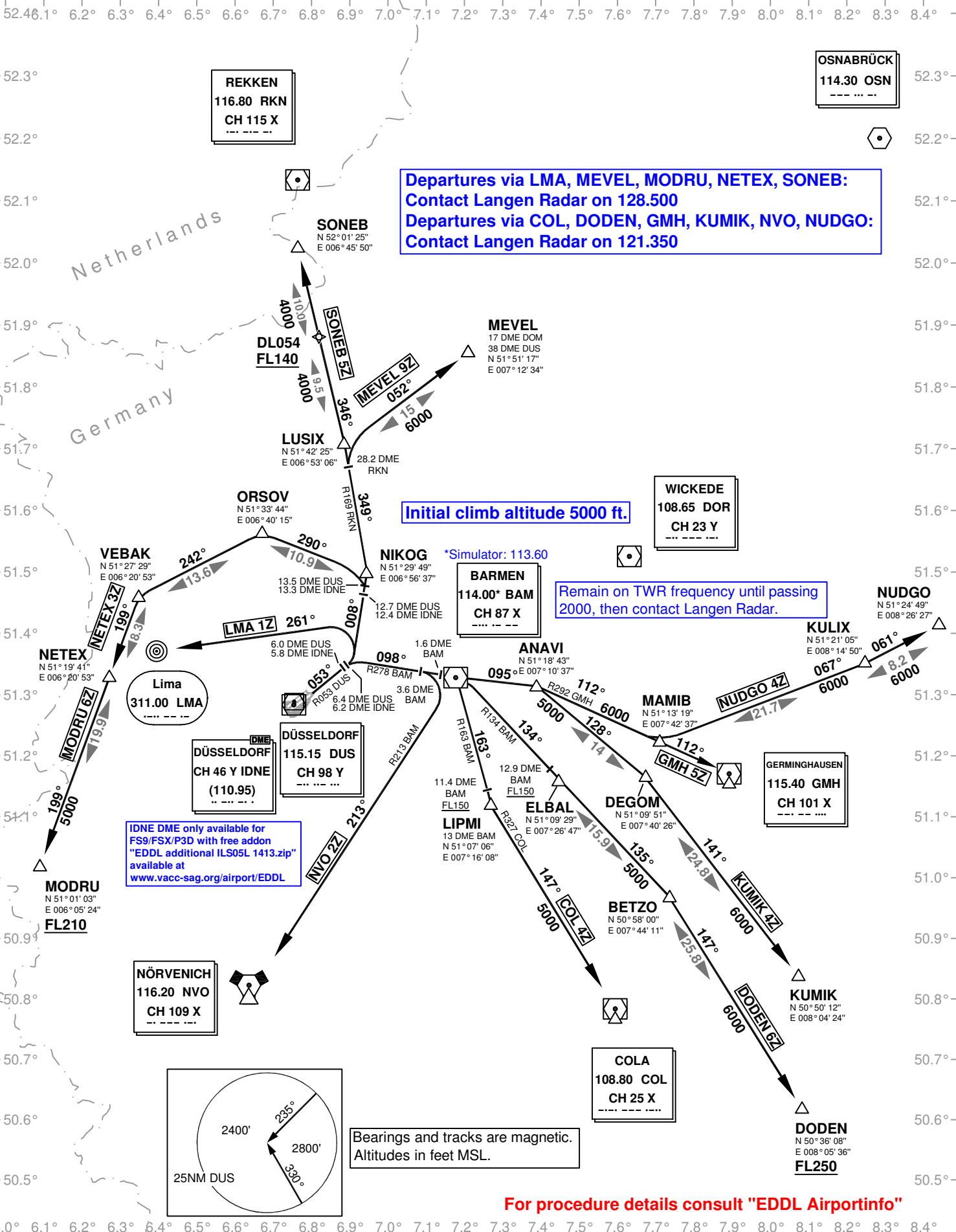
Langen Radar 121.350

Ground 121.900

128.500

VAR: 1°E

### SID RWY 05R



Corrections: BAM VOR-DME, Procedures