

VATSIM Germany Instrument Approach Chart



DÜSSELDORF EDDL

Elevation: THR23L 138 ft.

ATIS 123.775
Langen Radar 128.550
Director 128.650

Tower 118.300
Ground (West) 121.900
Ground (East) 121.600

ILS CAT II & III or LOC RWY 23L

VAR: 1°E

Bearings and tracks are magnetic.
Altitudes in feet MSL.

German Airports
FS9/FSX/P3D:
IDNE DME only
available with free
addon* "EDDL
additional ILS05L
1413.zip".

Do not mistake Essen/Mülheim
9 NM NNE of Düsseldorf when
approaching RWY 23L.

DME required

ILS/DME
109.90
IDSW

Lima
311.00 LMA

DÜSSELDORF
CH 46 Y IDNE
(110.95)

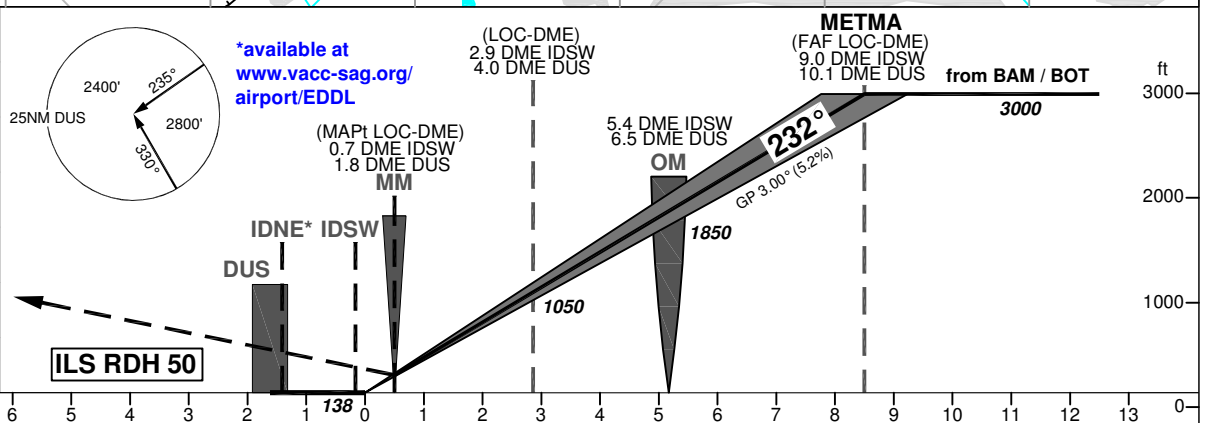
DÜSSELDORF
CH 98 Y
115.15 DUS

BARMEN
114.00* BAM
CH 87 X

MOENCHENGLADBACH
109.80 MHV

*Simulator: 113.60

OCA (OCH)	ILS CAT I	ILS CAT II	LOC DME
CAT A	279 (141)	187 (49)	520 (380)
CAT B	289 (151)	203 (65)	520 (380)
CAT C	299 (161)	216 (78)	520 (380)
CAT D	309 (171)	229 (91)	520 (380)
CAT E			
Large Aircraft	309 (171)	233 (95)	



MISSED APPROACH: Climb straight ahead to 2.6 DME DUS / 2.8 DME IDNE; RT on track 309° inbd LMA until crossing R009 MHV / R279 DUS; RT on track 060° outbd LMA to BOT climbing to 4000.

DME IDSW	2	3	4	5	6	7	8	9
DME THR	1.8	2.8	3.8	4.8	5.8	6.8	7.8	8.8
ALTITUDE	770	1090	1410	1720	2040	2360	2680	3000

GS	kt	80	100	120	140	160	180
OM - THR (5.2 NM)	MIN:SEC	3:54	3:07	2:36	2:14	1:57	1:44
Rate of descent (5.2%)	ft / MIN	420	530	640	740	850	960

CAT IIIa/b (MNM RVR 75m) approved.

LOC-DME: Timing not authorized for defining the MAPt.